

**LOT  
21**



birthdate 12/01/2012

scd **AA**

DAI 20 HIRASHIGE J287 FB330  
DAI 5 YURUHIME FB669

SANJIROU FB2501  
NAKAZAKURA FB2425

GROUP	TAJIMA	KEDAKA	TOTTORI	ITOZAKURA	SHIMANE	OKAYAMA	HIROSHIMA	OTHER
C	38%	20%	7%	13%	5%	13%	1%	3%

based on 41,500 Wagyu Group herd

EBV	TRAIT	EBV	ACC	EBV percentiles for 2460Z	
+0.8	birth weight (kg)	+4.1	63%	« HEAVIER	
+9	200-day Wt (kg)	+20	59%		HEAVIER »
+14	400-day Wt (kg)	+31	58%		HEAVIER »
+18	600-day Wt (kg)	+39	58%		HEAVIER »
+1	milk (kg)	+3	53%		» HIGHER
+0.4	eye muscle area (sq.cm)	+2.6	50%		LARGER »
+0.1	IMF (%)	-0.2	50%	« LOWER	
+\$20	fullblood feedlot index	+\$30			HIGHER »

**LMR MS HIRASHIGETAYASU 2460Z**, born December 2012, is an open heifer ready to begin a long life of breeding and flushing upon sale date. In addition, **2460Z** tested **Homozygous AA for the SCD gene**.

GROUP	TAJIMA	KEDAKA	TOTTORI	ITOZAKURA	SHIMANE	OKAYAMA	HIROSHIMA	OTHER
D	66%	20%	0%	0%	0%	0%	6%	6%

Breed Avg. EBVs 2012 born calves		EBV	TRAIT	EBV	ACC	EBV percentiles for 1201Y	
	+0.8		birth weight (kg)	+1.1	77%	HEAVIER <<	
	+9		200-day Wt (kg)	+14	70%		HEAVIER >
	+14		400-day Wt (kg)	+20	70%		HEAVIER >
	+18		600-day Wt (kg)	+27	68%		HEAVIER >
	+1		milk (kg)	-1	55%	<< LOWER	
	+0.4		eye muscle area (sq.cm)	+1.5	51%		LARGER >
	+0.1		IMF (%)	+0.2	52%		>> HIGHER
	+\$20		fullblood feedlot index	+\$34			HIGHER >

100                      50                      0

9304W SANJIROU X MICHIFUKU 38.88% IMF

**LOT  
23**



birthdate 11/11/2012

scd VA

DAI 20 HIRASHIGE J287 FB330  
DAI 5 YURUHIME FB669

LMR YOJIMBO 634S FB6761

GROUP	TAJIMA	KEDAKA	TOTTORI	ITOZAKURA	SHIMANE	OKAYAMA	HIROSHIMA	OTHER
C	46%	20%	7%	9%	1%	14%	1%	2%

based on 41,500 Wagyu Group herd

EBV	TRAIT	EBV	ACC	EBV percentiles for 2020Z	
+0.8	birth weight (kg)	+3.1	62%	« HEAVIER	
+9	200-day Wt (kg)	+15	59%		HEAVIER »
+14	400-day Wt (kg)	+22	58%		HEAVIER »
+18	600-day Wt (kg)	+29	57%		HEAVIER »
+2	milk (kg)	+1	53%	LOWER «	
+0.4	eye muscle area (sq.cm)	+1.7	49%		LARGER »
+0.1	IMF (%)	-0.1	50%	« LOWER	
+\$20	fullblood feedlot index	-			

**Hirashigetayasu ETJ001** is a sire whose reputation for outstanding growth precedes him. **ETJ001** is the son of **Dai 20 Hirashige**, (interestingly, a product of a father-daughter mating) is called the “elite of elite” by Kenichi Ono and is considered one of the most significant bulls of the **Kedaka** line. **ETJ001** epitomizes the **Kedaka** line and its hallmark large frame size and balance, as well as its propensity for producing A5 grade beef in Japan.

With 14 images analyzed, **ETJ001** is ranked #3 by REA in the 2014 LMR SPS. And when measured against 3871 other FB Wagyu bulls, **ETJ001 has been assigned EBVs by BREEDPLAN that show him as residing in the top 1% for: 600-Day Weights; REA and Milk** – supporting data we are finding in our ongoing study at LMR. In addition, even though he is not known to be a highly marbling sire he nonetheless produced 14 carcasses averaging 23.47%: two times the USDA Prime Grade (8-12%). **An example of ETJ001's potency is shown at right.**



0203X ETJ001 X SANJIROU 34% IMF

With **Yojimbo** on her maternal side, **2020Z** is a well-balanced female. Rounding out the maternal side is **Sanjirou's** massively marbled legacy. **Yojimbo** was the Sale Topper in LMR's initial Production Sale in 2008, while **Sanjirou is currently the #1 REA FB Wagyu Sire** in Lone Mountain's Sire Study with an average of 14.83 (7 carcasses). **An example of Yojimbo's potency is shown at right.**

Born November 2012, **2020Z** has all the ingredients in one package – and she had a highly respectable 400-day scan of 4.64% IMF. **2020Z** sells as an open heifer, ready to breed or flush by the time you get her home.

LOT  
24

## LMR MS ITOMICHI 1/2 1422Y



TF ITOMICHI 1-2, SIRE OF LMR MS ITOMICHI 1/2 1422Y

registration no. **FB12809** birthdate **09/29/2011** scd **VA**

sire TF ITOMICHI 1-2 FB2126  
ITOMICHI J1158 FB500  
DAI 2 KINTOU J337756 FB464

dam LMR MS TAK-3612 749T FB7780  
BR TAKAZAKURA-0606 3612 FB5972  
BR MS ITOMICHI/0602 3655 FB6516

GROUP	TAJIMA	KEDAKA	TOTTORI	ITOZAKURA	SHIMANE	OKAYAMA	HIROSHIMA	OTHER
<b>C</b>	42%	2%	1%	32%	7%	6%	8%	2%

2013 November WAGYU Group BREEDPLAN  
based on 41,500 Wagyu Group herd

EBV	TRAIT	EBV	ACC	EBV percentiles for 1422Y	
+0.8	birth weight (kg)	+1.6	60%	« HEAVIER	HEAVIER »
+9	200-day Wt (kg)	+13	58%		» HEAVIER
+14	400-day Wt (kg)	+18	59%		HEAVIER »
+18	600-day Wt (kg)	+25	56%		» HIGHER
+1	milk (kg)	+3	51%		LARGER »
+0.4	eye muscle area (sq.cm)	+1.5	40%	« LOWER	
+0.1	IMF (%)	-0.2	41%		
+\$20	fullblood feedlot index	+\$12		« LOWER	

BRED Avg. EBVs  
2012 born calves

100 50 0

With an EBV exemplifying excellent growth and milk production, **LMR MS ITOMICHI 1/2 1422Y** is another breeding female that will augment your herd's productivity well. Born September 2011, **1422Y**, like her full sister **1410Y** (Lot #55) hails from the **Dai 2 Kintou** cow line and the **Dai 7 Itozakura** sire line both known for producing consistently large animals.

Like her sister, with 42% **Tajima** and 32% **Itozakura** and a sprinkling of other bloodlines, this composite breeding female has the makings of a truly sound, well-rounded investment for your herd. **1422Y's** dam, the prolific **749T**, has produced 17 calves for the LMCC program – and 42 viable embryos in 5 flushes. **749T** is in this sale as Lot #94. Two of **1422Y's** brothers have produced strong returns in the Lone Mountain Wagyu beef program with excellent yield and orders of magnitude above USDA Prime in marbling.

This is the **TF Itomichi 1-2** legacy: growth and great mothering ability with a penchant for strong marbling. Note that **his Milk EBV ranks in the top 1%** of almost 4,000 bulls analyzed by BREEDPLAN – and the **#3 Dam Sire ranking** in the 2014 LMR Sire Performance Study averaging 28.96% IMF on 7 carcasses. **An example of Itomichi 1-2's ability as a Dam Sire is pictured at right.**

**1422Y** is pregnant, due in June and ready for breeding or flushing before year's end. She was AI'd to **Michifuku** and covered by **Bar R Sanjirou 4P** – but it is our strong belief that the calf will be a **Michifuku** calf.



9391W TF148 X ITOMICHI 1-2 35% IMF

## LMR MS KITAGUNI JR 9379W

LOT  
25

registration no. **FB10929** birthdate **09/01/2009** scd **VA**

sire **KITAGUNI JR FB2422**  
**KITAGUNI 7 NO 8 J1530 FB581**  
**NAKAYUKI J13943 FB2893**

dam **BR MS MICH-8614 2653 FB5826**  
**BR MICHIFUKU 8614 FB4756**  
**BR MS TAKAZAKURA 9642 FB4828**

GROUP	TAJIMA	KEDAKA	TOTTORI	ITOZAKURA	SHIMANE	OKAYAMA	HIROSHIMA	OTHER
<b>C</b>	51%	11%	3%	12%	6%	10%	2%	5%

2013 November WAGYU Group BREEDPLAN  
 based on 41,500 Wagyu Group herd

EBV	TRAIT	EBV	ACC	EBV percentiles for 9379W	
+0.8	birth weight (kg)	-1.7	62%		LIGHTER »
+9	200-day Wt (kg)	-1	65%	« LIGHTER	
+14	400-day Wt (kg)	-8	67%	« LIGHTER	
+18	600-day Wt (kg)	-12	61%	« LIGHTER	
+1	milk (kg)	-	-		
+0.4	eye muscle area (sq.cm)	-2.6	47%	« SMALLER	
+0.1	IMF (%)	+0.6	49%		HIGHER »
+\$20	fullblood feedlot index	+\$4		« LOWER	

BREED Avg. EBVs  
 2012 born calves

100 50 0

Born September of 2009, **LMR MS KITAGUNI JR 9379W** has the rare distinction of cropping up in the Top 7% for IMF EBV while scoring a whopping 6.50% on her 400-day ultrasound scan. That's a one-two punch all but guaranteeing a long line of 'beyond prime' progeny from this in-her-prime breeding cow. She is an up-and-coming 5 year-old with many years of achievement in her future. Add to that, **Kitaguni Jr being #1 in IMF% in the 2014 SPS (35.31% average based on 9 images)**. We would not be surprised to see **Kitaguni Jr** jumping to the top of the Dam Sire listing as Lone Mountain results are just beginning to filter in.



9386W TF148 X MICH-8614 34% IMF



9201W ITOHANA X MICH-8614 34% IMF

Add to the marbling distinction the fact that **9379W** comes from dam **BR Ms Michi-8614 2653**, and the story and the impressive caliber here become even clearer. **2653** is 12 years old and a good flush cow, producing 30 viable embryos and produced 16 offspring for us – a recipe for longevity and productivity. Of those 15 siblings of **9379W**, we were delighted to find remarkable progeny steers in the Lone Mountain Fullblood Wagyu beef program: **an Itohana-2 steer with 34% IMF, and a TF148 steer with 35% IMF (pictured)**.

**9379W** is on track to follow suit. With a **Kitaguni Jr. x Michifuku** son / **Takazakura** pedigree, she is a wonderful composite lineage animal with 51% **Tajima**, 11% **Kedaka**, 12% **Itozakura**, and 10% **Okayama**.

**9379W** is open and ready to flush or breed, as you like.

LOT  
26

## LMR MS YOJIMBO 2356Z

registration no. **FB14523** birthdate **06/08/2012** scd **VA**sire LMR YOJIMBO 634S FB6761  
BAR R FUKUTSURI 36H FB4235  
BR MS YASUFUKU 0609 FB5082dam LMR MS HIRASHIGETAYASU 9221W  
FB9523  
HIRASHIGETAYASU ETJ001 FB670  
BAR R MS SANJIROU 69P FB5970

GROUP	TAJIMA	KEDAKA	TOTTORI	ITOZAKURA	SHIMANE	OKAYAMA	HIROSHIMA	OTHER
D	71%	12%	4%	0%	0%	8%	1%	4%

2013 November WAGYU Group BREEDPLAN  
based on 41,500 Wagyu Group herd

EBV	TRAIT	EBV	ACC	EBV percentiles for 2356Z	
+0.8	birth weight (kg)	+1.3	75%	HEAVIER <<	
+9	200-day Wt (kg)	+9	66%	LIGHTER <<	
+14	400-day Wt (kg)	+9	66%	LIGHTER <<	
+18	600-day Wt (kg)	+13	62%	LIGHTER <<	
+1	milk (kg)	-	-		
+0.4	eye muscle area (sq.cm)	+1.1	42%		LARGER >>
+0.1	IMF (%)	-0.1	44%	<< LOWER	
+\$20	fullblood feedlot index	+\$6		<< LOWER	

BRED Avg. EBVs  
2012 born calves

100 50 0

Born June 2012, **LMR MS YOJIMBO 2356Z** is sired by **LMR Yojimbo 634S** (the sale topper in our first production sale in 2008 – purchased by Vic Castellon of Monarch Farms, Folsom, Louisiana, for \$35,000). **See photos at right of Yojimbo-sired progeny.**

We can only hypothesize about **Yojimbo's** future as Dam Sire, but if history truly repeats itself, we need look no further than his initial results in the Lone Mountain Sire Performance Study: average 29.64% IMF with 12 carcass images analyzed - less than 1% difference between **Yojimbo** and **Shigesheetani**! And the average USDA grade is AB50! There is potential there for the makings of a great Dam Sire.

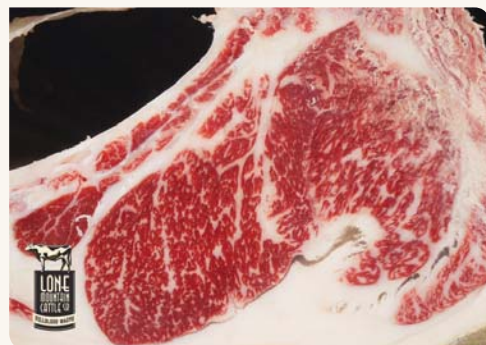
One of the more heavily **Tajima**-influenced of our breeding females (at 71% **Tajima**), **2356Z** brings a dollop of Kedaka by way of **Hirashigetayasu ETJ001**. And thus, you get the brilliant balance present here – an EBV proving out excellent beef yield and good size, with an expectation of typical **Tajima** marbling.

In fact, **2356Z's** dam is **LMR Ms Hirashigetayasu 9221W** who scored an almost unfathomable 7.53% IMF in a 400-day scan. She's produced four calves and 12 viable embryos in 2 flushes. Full sister **2364Z** and half sister by **Haruki II, 2367Z**, are in the sale as Lot #48 and Lot #92, respectively.

**2356Z** is exposed to **Shigesheetani** and due in November if bred. If not, she will sell open and ready to flush or breed. **She has been found to be Homozygous AA for the SCD Gene.**



8155U YOJIMBO X MICHIFUKU 40.2% IMF



9274W YOJIMBO X MICHIFUKU 38.70% IMF

## LMR MS YASUFUKU 3449A

LOT  
27

registration no. **FB16399** birthdate **06/05/2013** scd **AA**

sire **YASUFUKU JR FB5061**  
**YASUFUKU J930 FB576**  
**KANEKO 5 FB5071**

dam **LMR MS ITOSHIGENAMI 8107U FB8622**  
**ITOSHIGENAMI TF148 FB3682**  
**BR MS MICHIFUKU T4E 8605 FB4473**

GROUP	TAJIMA	KEDAKA	TOTTORI	ITOZAKURA	SHIMANE	OKAYAMA	HIROSHIMA	OTHER
<b>B</b>	81%	3%	1%	6%	0%	0%	0%	9%

2014 March WAGYU Group BREEDPLAN  
 based on 41,500 Wagyu Group herd

EBV	TRAIT	EBV	ACC	EBV percentiles for 3449A	
+0.8	birth weight (kg)	-2.3	57%	LIGHTER »	
+9	200-day Wt (kg)	-5	57%	« LIGHTER	
+14	400-day Wt (kg)	-9	56%	« LIGHTER	
+18	600-day Wt (kg)	-10	54%	« LIGHTER	
+2	milk (kg)	-	-		
+0.4	eye muscle area (sq.cm)	+0.3	43%		LARGER
+0.1	IMF (%)	-	-		
+\$20	fullblood feedlot index	-			

BREED Avg. EBVs  
2012 born calves

100 50 0

Born June of 2013, **LMR MS YASUFUKU 3449A** brings a trifecta of potent marbling and mothering to the table. A virgin heifer, **3449A** was born out of dam **LMR Ms Itoshigenami 8107U** who scored in the top 10% IMF EBV while also bringing in a coveted +\$25 on BREEDPLAN's Fullblood Feedlot Index. One full sister of **3449A** is also in the sale: **LMR Ms Yasufuku 3411A** as Lot #19.



9373W YOJIMBO X YASUFUKU JR 36.77% IMF



8167U KITAGUNI JR X YASUFUKU JR 39.1% IMF

**3449A** is not just a highly **Tajima**-infused female; she is the product of a mating between two of the most highly marbling foundation sires in heavy use by LMR. Her sire, **Yasufuku Jr** is the #1 Dam Sire in the LMR Sire Performance Study (SPS). In addition, **Yasufuku Jr** is the #2 IMF sire, #2 in REA and #2 when ranked by USDA Grading Score. **Examples of Yasufuku Jr's ability as a dam sire pictured.**

**3449A's** dam sire is **Itoshigenami TF148**. According to **USDA grading in the Study**, he is the #1 sire with an average grade of **AB100** and in the IMF department he ranks #3, behind only **Kitaguni Jr** and **Yasufuku Jr**. **TF148** is descended from **Shigeshigenami**, regarded by Kenichi Ono as the bull most representative of "meat-quality Wagyu" and has written "There is only one **Yasufuku** and one **Shigeshigenami**".

With 81% **Tajima** blood in her, **3449A** will make an outstanding breeding female. She'll be right as rain to begin a fertile career shortly after landing on your property. **Topping off the brilliant pedigree, 3449A tested Homozygous AA for the SCD gene.**

LOT  
28

## LMR MS SHIGESHIGETANI 1210Y


 registration no. **FB11918**      birthdate **03/09/2011**      scd **AA**

 sire SHIGESHIGETANI FB2907  
 HARUKI II FB1614  
 SUZUTANI FB1617

 dam LMR MS SANJIROU 713T FB7460  
 SANJIROU FB2501  
 BR MS TAKAZAKURA 0652 FB5076

GROUP	TAJIMA	KEDAKA	TOTTORI	ITOZAKURA	SHIMANE	OKAYAMA	HIROSHIMA	OTHER
D	76%	6%	0%	2%	0%	5%	5%	100%

 2013 November WAGYU Group BREEDPLAN  
 based on 41,500 Wagyu Group herd

EBV	TRAIT	EBV	ACC	EBV percentiles for 1210Y	
+0.8	birth weight (kg)	+1.1	76%	HEAVIER <<	
+9	200-day Wt (kg)	+9	66%	LIGHTER <<	
+14	400-day Wt (kg)	+17	67%		>> HEAVIER
+18	600-day Wt (kg)	+21	62%		>> HEAVIER
+1	milk (kg)	-	-		
+0.4	eye muscle area (sq.cm)	+1.0	42%		LARGER >>
+0.1	IMF (%)	+0.2	45%		>> HIGHER
+\$20	fullblood feedlot index	+\$23			>> HIGHER

Born March 2011, **LMR MS SHIGESHIGETANI 1210Y** is an outstanding example of **Monjiro** line breeding, with **Suzutani** appearing twice in her pedigree.

**1210Y's** sire, **Shigeshigetani**, and her dam sire, **Sanjiro**, both descend from **Suzutani** and further from **Shigekanenami** - the bull that single-handedly made the **Kumanami** line the celebrated **Tajima** family line it is today, for its powerful marbling.

Rounding out this outstanding pedigree is a double instance of **Tanishige**, **Suzutani's** sire, the bull undoubtedly contributing to the phenomenal meat quality and large ribeye area and high yields found in **Sanjiro** and **Haruki II's** progeny. The sprinkling of **Takazakura** genetics adds growth into the mix.

**1210Y's** dam, **LMR Ms Sanjiro** 713T, has produced 93 viable embryos for Lone Mountain and 18 calves in her tenure. Included in the 18 calves are two others in the sale today: full sister **1207Y** (as Lot #51) and half-sib **1282Y** (as Lot #13). In addition, **1210Y's** brother by **Itohana 2**, **9272W** measured a smashing **36.60% IMF**, shown at right.

**1210Y** has calved once and is currently exposed to **Hirashigetayasu ETJ001** and due in November. She has tested **Homozygous AA** for the **SCD** gene.



9272W TF ITOHANA 2 X SANJIROU 36.6% IMF

**LOT  
29**



birthdate 07/11/2011

scd VA

ITOHANA 1809 FB504

AINO 6 J674297 FB 452

BR MICHIFUKU 1628 FB5836

BR MS KIKUHANA 8620 FB4481

GROUP	TAJIMA	KEDAKA	TOTTORI	ITOZAKURA	SHIMANE	OKAYAMA	HIROSHIMA	OTHER
C	28%	5%	1%	53%	4%	3%	3%	3%

YOJIMBO 634S x 1270Y

GROUP	TAJIMA	KEDAKA	TOTORI	ITOZAKURA	SHIMANE	OKAYAMA	HIROSHIMA	OTHER
C	54%	5%	1%	27%	2%	3%	3%	5%

2013 November WAGYU Group BREEDPLAN  
based on 41,500 Wagyu Group herd

EBV	TRAIT	EBV	ACC	EBV percentiles for 1270Y	
+0.8	birth weight (kg)	+1.3	54%	HEAVIER <<	
+9	200-day Wt (kg)	+8	53%	LIGHTER <<	
+14	400-day Wt (kg)	+13	53%	LIGHTER <<	
+18	600-day Wt (kg)	+16	53%	LIGHTER <<	
+1	milk (kg)	-	-		
+0.4	eye muscle area (sq.cm)	+0.3	41%	SMALLER <<	
+0.1	IMF (%)	-0.1	41%	<< LOWER	
+\$20	fullblood feedlot index	+\$6		<< LOWER	

**Yojimbo** was not only the \$35,000 sale topper in our first Production Sale in 2008 **but has produced specimens like the one shown at right – weighing in at 38.7% IMF.**



9274W YOJIMBO X MICHIFUKU 38.70% IMF

**LMR MS HIRO 2438Z**



registration no. **FB14940**      birthdate **11/14/2012**      scd **VV**

sire LMR HIRO 0195X FB11484

dam LMR MS TOSHIRO 1/3 0151X FB11172

GROUP	TAJIMA	KEDAKA	TOTTORI	ITOZAKURA	SHIMANE	OKAYAMA	HIROSHIMA	OTHER
C	56%	11%	1%	15%	2%	3%	4%	6%

– 2013 November WAGYU Group BREEDPLAN  
based on 41,500 Wagyu Group herd

EBV		ACC		EBV percentiles for 2438Z	
+0.8	birth weight (kg)	+0.6	68%	» LIGHTER	
+9	200-day Wt (kg)	+9	62%	LIGHTER <	
+14	400-day Wt (kg)	+19	62%	HEAVIER »	
+18	600-day Wt (kg)	+22	57%	» HEAVIER	
+1	milk (kg)	-	-		
+0.4	eye muscle area (sq.cm)	-	-		
+0.1	IMF (%)	-	-		
+\$20	fullblood feedlot index	+\$25		» HIGHER	

Born November 2012, **LMR MS HIRO 2438Z** has two of our own most promising herd sires in her pedigree - **LMR Hiro 0195X** and **LMR Toshiro 1/3 723T. 2438Z** is a composite breeding animal with a majority **Tajima** (56%) with a healthy dosage of **Kedaka** (11%) and **Itozakura** (15%) rounding out her lineage.

**2438Z's** dam is **LMR Ms Toshiro 1/3 0151X**, also in the sale as Lot #30, and showing up well rounded and promising herself with a 4.98% 400-day IMF scan. **Her dam, Toshiro 723T, is the #1 Sire for Carcass Weight (1058 lbs.) in the 2014 LMR SPS**, and #4 for IMF% (31.26% based on 10 carcasses) and #4 by USDA Grade (AB50). In addition, note that **Toshiro 723T** ranks in BREEDPLAN's top 15% for Ribeye Area EBV and in the top 5% for Growth (Weights) as measured against over 3800 Wagyu sires. **9236W was a steer sired by Toshiro with 43.88% IMF – see photo at right.**

Bear in mind that the LMR herd sire **Hiro 0195X** was the result of intensive linebreeding to **Sanjirou/Monjiro**, a young, potent and powerful bull, being used heavily at a LMR. With 72% **Tajima** and 12% **Kedaka** genetics, **Hiro 0195X** is a Group “D” sire, with great potential to add phenomenal carcass characteristics to his offspring. In other words, expect excellent growth and milking traits as well as marbling to be passed on to progeny of this outstanding breeding cow.

**LMR MS HIRO 2438Z** is an open heifer ready to be bred or flushed upon landing on your ranch, ready to bring returns on your investment immediately.



9236W TOSHIRO X TAKAZAKURA-0606 43.88% IMF

## LMR MS TOSHIRO 1/3 0118X

LOT  
31

registration no. **FB10935** birthdate **02/07/2010** scd **VA**

sire LMR TOSHIRO 1/3 (723T) FB7475  
 TF KIKUHANA FB2127  
 REIKO J1883963 FB2424

dam LMR MS TAK-3612 735T FB7767  
 BR TAKAZAKURA-0606 3612 FB5972  
 BR MS HARUKI-2 2606 FB5822

GROUP	TAJIMA	KEDAKA	TOTTORI	ITOZAKURA	SHIMANE	OKAYAMA	HIROSHIMA	OTHER
<b>C</b>	47%	9%	2%	30%	5%	2%	1%	4%

2013 November WAGYU Group BREEDPLAN  
 based on 41,500 Wagyu Group herd

EBV	TRAIT	EBV	ACC	EBV percentiles for 0118X	
+0.8	birth weight (kg)	+2.0	77%	◀ HEAVIER ▶	
+9	200-day Wt (kg)	+15	66%	HEAVIER ▶	
+14	400-day Wt (kg)	+26	64%	HEAVIER ▶	
+18	600-day Wt (kg)	+32	61%	HEAVIER ▶	
+1	milk (kg)	+4	44%	HEAVIER ▶	
+0.4	eye muscle area (sq.cm)	+1.7	32%	LARGER ▶	
+0.1	IMF (%)	-0.3	33%	◀ LOWER	
+\$20	fullblood feedlot index	+\$14		LOWER ◀	
BRED Avg. EBVs 2012 born calves				100	50 0

Scanned at 400 days with a remarkable 6.40% IMF, **LMR MS TOSHIRO 1-3 0118X** is born out of our own **LMR Toshiro 1-3 723T** who ranks **#1 for Carcass Weight** (average 1058 lbs) and #4 by IMF, with an average IMF of 31.26% based on 10 actual carcass results in the 2014 LMR Sire Performance Study (SPS). In other words, expect excellent growth and milking traits as well as marbling to be passed on to progeny of this outstanding breeding cow.

Born February 2010, **0118X** descends from **Dai 7 Itozakura** - known as the "best of the best" bull in Japan. **0118X** brings **Dai 7's** strongest points as far as daily gain and gentle nature. Not to be overlooked is the appearance of **Kitaguni 7 No 8** on the paternal side of her pedigree (**Reiko's** sire). **Kitaguni 7 No 8** ranks third in Professor Kenichi Ono's assessment of the best Wagyu in Japan, after **Yasufuku J930** and **Dai 7 Itozakura**. Pictured at right are examples of Toshiro-sired ribeyes.

With 47% **Tajima**, 30% **Itozakura**, and 9% **Kedaka** with sprinklings of other lines, this composite breeding female will bring the best of all possible worlds to your herd. **0118X's** dam, **735T**, is listed as Lot #60 in this Sale catalog. Full sister **2414Z** is also in the sale as Lot #52.

**0118X** was AI exposed to **LMR Yojimbo**, with an expected due date of November. If not bred, **0118X** will sell open and ready to flush.



9236W TOSHIRO X TAK-0606 43.88% IMF



9341W TOSHIRO X SANJIROU 4P 37% IMF

LOT  
32

## LMR MS MICHIFUKU 783T


 registration no. **FB8585**      birthdate **11/09/2007**      scd **AA**

 sire MICHIFUKU FB1615      MONJIRO 11550 FB201  
    MICHIKO J655635 FB215

 dam BR MS FUKUTSURU 9671 FB4950      JVP FUKUTSURU 068 FB2101  
    JVP KIKUSHIGE 5298E FB3100

GROUP	TAJIMA	KEDAKA	TOTTORI	ITOUZAKURA	SHIMANE	OKAYAMA	HIROSHIMA	OTHER
<b>B</b>	90%	5%	3%	0%	0%	1%	0%	2%

## SHIGESHIGETANI x 783T

GROUP	TAJIMA	KEDAKA	TOTTORI	ITOUZAKURA	SHIMANE	OKAYAMA	HIROSHIMA	OTHER
<b>D</b>	83%	9%	1%	0%	0%	0%	3%	4%

 2013 November WAGYU Group BREEDPLAN  
 based on 41,500 Wagyu Group herd

EBV	TRAIT	EBV	ACC	EBV percentiles for 783T	
+0.8	birth weight (kg)	-0.3	81%	LIGHTER »	
+9	200-day Wt (kg)	+4	70%	« LIGHTER	
+14	400-day Wt (kg)	-2	71%	« LIGHTER	
+18	600-day Wt (kg)	-4	69%	« LIGHTER	
+1	milk (kg)	-1	57%	« LOWER	
+0.4	eye muscle area (sq.cm)	-1.2	53%	« SMALLER	
+0.1	IMF (%)	+0.2	53%	» HIGHER	
+\$20	fullblood feedlot index	-\$8		« LOWER	

100      50      0

This winning lass is a dream of a mating. Born November of 2007, **LMR MS MICHIFUKU 783T** is sired by **Michifuku** with **JVP Fukutsuru 068** over **JVP Kikuyasu 400** on her maternal side. These are three of the most outstanding foundation sires, all in one bundle. Remember, **JVP Kikuyasu 400** was the largest and heaviest **Tajima** bull ever to leave Japan. And his maternal grandsire was one of the most famous bulls bred in Hyogo Prefecture, home of Japanese Kobe Beef.

**783T's** dam, **BR Ms Fukutsuru 9671**, one of the original 9 Fullblood females purchased by Lone Mountain in 2005, was bred by Gerry Pittenger, one of our mentors from Washington State. She produced 15 calves for us during her short stay – she was sold in the First LMR Fullblood Wagyu Sale in 2008 – including several cows still in production for us.

This classic breeding has resulted in this breeding powerhouse. She's an excellent flush cow, producing 50 viable embryos in her only four flushes, with 15 calves on her progeny list. She is 90% **Tajima** so of course expect ample marbling, such as her **TF Itohana 2** son **0159X** who scored a delicious 36.36% IMF on the carcass camera in the beef program. See photo at right.

**783T** is pregnant to **Shigeshigetani** and due in August. She tested **Homozygous AA** for the SCD gene.



0159X ITOHANA-2 X MICHIFUKU 36.36% IMF

## LMR MS SANJIROU 713T

LOT  
33

registration no. **FB7460** birthdate **03/19/2007** scd **AA**

sire **SANJIROU FB2501** | **MICHIFUKU FB1615**  
**SUZUTANI FB1617**

dam **BR MS TAKAZAKURA 0652 FB5076** | **TAKAZAKURA FB2892**  
**JVP MS FUKUKANE 05E FB3094**

GROUP	TAJIMA	KEDAKA	TOTTORI	ITOZAKURA	SHIMANE	OKAYAMA	HIROSHIMA	OTHER
<b>D</b>	78%	0%	0%	3%	0%	9%	3%	6%

2013 November WAGYU Group BREEDPLAN  
 based on 41,500 Wagyu Group herd

EBV	TRAIT	EBV	ACC	EBV percentiles for 713T	
+0.8	birth weight (kg)	+1.8	82%	« HEAVIER	
+9	200-day Wt (kg)	+9	73%	LIGHTER «	
+14	400-day Wt (kg)	+21	73%		HEAVIER »
+18	600-day Wt (kg)	+23	70%		» HEAVIER
+1	milk (kg)	-5	53%	« LOWER	
+0.4	eye muscle area (sq.cm)	+1.0	49%		LARGER »
+0.1	IMF (%)	+0.1	51%		» HIGHER
+\$20	fullblood feedlot index	+\$16		LOWER «	

100 50 0

Born March of 2007, **LMR MS SANJIROU 713T** is seven years old and about to reach the prime of her fertility. Over the course of 9 flushes, **713T** produced an outstanding 93 viable embryos - that's an average of more than 10 viable embryos per flush - and delivered another 10 viables by **Shigeshigetani** just a few months ago.

**713T's** dam is **BR Ms Takazakura 0652**, who also had a 10-embryo average per flush, producing 78 viable embryos over 8 flushes, including one flush that produced 17 sexed **Yojimbo** embryos! Bring this best in class breeding beaut to your business and watch as she brings the dividends!

With **Sanjiro** on her paternal side, and **Takazakura** and **JVP Fukutsuru 068** on her maternal side, **713T** will no doubt continue in her legacy of pairing strong growth with outstanding marbling progeny. **Consider at right a picture of one of her steer calves that brought home a remarkable 36.6% IMF for the Lone Mountain Fullblood Wagyu beef program.**

**713T** has produced 18 calves for us; she is the mother of one of our **Shigeshigetani** herd bulls, **LMR Shige II 1206Y**. Keep an eye out for two of her daughters, **1207Y** and **1282Y**, who are in this sale as Lot #51 and #13, respectively.

**713T** is exposed to **ETJ001** and due in November if bred. Otherwise, she sells open and ready to flush or breed. **She has tested Homozygous AA for the SCD gene.**



9272W TF ITOHANA 2 X SANJIROU 36.6% IMF

LOT  
34

## LMR MS KITAGUNI 9281W


 registration no. **FB10201**      birthdate **04/04/2009**      scd **VA**

 sire **KITAGUNI JR FB2422**      **KITAGUNI 7 NO 8 J1530 FB581**  
    **NAKAYUKI J13943 FB2893**

 dam **BR MS KIKUYASU 4602 FB6236**      **JVP KIKUYASU 400 FB2100**  
    **BR MS MICHIFUKU 9650 FB4803**

GROUP	TAJIMA	KEDAKA	TOTTORI	ITOZAKURA	SHIMANE	OKAYAMA	HIROSHIMA	OTHER
<b>C</b>	64%	9%	1%	12%	6%	7%	0%	1%

 2013 November WAGYU Group BREEDPLAN  
 based on 41,500 Wagyu Group herd

EBV	TRAIT	EBV	ACC	EBV percentiles for 9281W	
+0.8	birth weight (kg)	-1.6	62%		LIGHTER »
+9	200-day Wt (kg)	-2	64%	« LIGHTER	
+14	400-day Wt (kg)	-11	61%	« LIGHTER	
+18	600-day Wt (kg)	-16	59%	« LIGHTER	
+1	milk (kg)	-2	54%	« LOWER	
+0.4	eye muscle area (sq.cm)	-2.1	42%	« SMALLER	
+0.1	IMF (%)	-	-		
+\$20	fullblood feedlot index	-\$1		« LOWER	

100      50      0

We don't hide the fact that Lone Mountain loves our **Kitaguni Jr.** progeny. Those born from this fantastic sire are as close to guaranteed as possible to bring immense marbling and the requisite dividends to your herd. **Kitaguni Jr. is not only #1 for IMF in the 2014 SPS (averaging 35.31% IMF with 9 carcasses imaged), but shows an average AB50 USDA Grade over 13 LMW steer carcasses. Kitaguni's prowess as Dam Sire promises to be extraordinary - evidence at right.**

In addition to her **Kitaguni Jr.** sire, **9281W's** pedigree includes the infamous **Michifuku** and his mega-marbling propensity, as well as **JVP Kikuyasu 400**, whose maternal grandsire, **Kikuteru-Doi**, was one of the most famous bulls bred in Hyogo Prefecture. This history lives on through this lineage and in this excellent breeding female.

With this 64% **Tajima**, 12% **Itozakura** matchup, this is sure to be the breadwinner. And her dam is the near-legendary (to us) **BR Ms Kikuyasu 4602** who was flushed only four times and produced an astounding 50 viable embryos. She's almost singlehandedly brought our herd into the quadruple prime realm. **9281W** had two **Sanjiro** brothers: one, **9377W**, was graded VAB100 and another, **9378W**, measured 33.44% IMF as shown at right.

**9281W** is open and ready to be bred or flushed as you see fit when she lands on your property.



8157U KITAGUNI X SANJIROU 34.2% IMF



9378W SANJIROU X KIKUYASU 400 33.44% IMF

## LMR MS SHIGESHIGETANI 2456Z

LOT  
35
 registration no. **FB14958**      birthdate **11/27/2012**      scd **VA**

 sire SHIGESHIGETANI FB2907  
 HARUKI II FB1614  
 SUZUTANI FB1617

 dam LMR MS TAK-3612 741T FB7772  
 BR TAKAZAKURA-0606 3612 FB5972  
 BR MS MICH-1628 4630 FB6518

GROUP	TAJIMA	KEDAKA	TOTTORI	ITOUZAKURA	SHIMANE	OKAYAMA	HIROSHIMA	OTHER
<b>D</b>	70%	9%	1%	7%	0%	4%	4%	5%

 2013 November WAGYU Group BREEDPLAN  
 based on 41,500 Wagyu Group herd

EBV	TRAIT	EBV	ACC	EBV percentiles for 2456Z	
+0.8	birth weight (kg)	+0.1	51%	» LIGHTER	
+9	200-day Wt (kg)	+7	46%	LIGHTER <<	
+14	400-day Wt (kg)	+10	45%	LIGHTER <<	
+18	600-day Wt (kg)	+15	43%	LIGHTER <<	
+1	milk (kg)	-	-		
+0.4	eye muscle area (sq.cm)	-	-		
+0.1	IMF (%)	-	-		
+\$20	fullblood feedlot index	+\$20		LOWER <<	

 BREED Avg. EBVs  
 2012 born calves

100 50 0

Here's a lot that will surely pay your investment back in no time, folks! **LMR MS SHIGESHIGETANI 2456Z** has the distinction of being the daughter of one of our great donor cows, **LMR Ms Tak-3612 741T**, who has produced 46 viable embryos in five flushes (average of 9 viable embryos per flush).

**2456Z** herself displayed an amazing, out of this world, 7.66% IMF at 400 days!

It's no wonder, as **741T** has several instances of **Monjiro** and appearances by **Dai 7**

**Itozakura** and **Yasufuku J930** in her pedigree. **Monjiro** is the sire of **Michifuku** and **Haruki II** and grandsire of **Sanjiro**; **Dai 7 Itozakura** sired and grand-sired many famous Wagyu, including **Itomichi J1158**, **Kitaguni 7 No 8** and **Itozurudo** TF151; and **Yasufuku J930**, who has been praised by Kenichi Ono as the perhaps the greatest Wagyu bull in Japan. He declared: "There is only one **Yasufuku** and one **Shigeshigenami**."

**2456Z** is a 70% **Tajima** powerhouse, sired by **Shigeshigetani**, who you'll remember descends from **Shigeshigenami** who is known as the bull most representative of "meat-quality Wagyu", according to Ono and whose assets include a high degree of marbling and a high probability of good characteristics being passed down to progeny. **Above are pictures of the ribeyes of LMR Shigeshigetani-sired steers.**

**LMR MS SHIGESHIGETANI 2456Z** is an open heifer born in November 2012. Don't miss out on this fantastic breeding up-and-comer!



8183U SHIGESHIGETANI X MICHIFUKU 43.1% IMF



9225W SHIGESHIGETANI X MICHIFUKU 34.0% IMF

## A black cow with the number 0184 on its side, standing in a field with mountains in the background. The cow has a green tag on its ear and is standing on a patch of dirt and grass. The background shows a range of mountains under a clear sky. A small signature 'Bocorny ©' is visible in the bottom right corner of the image.

GROUP	TAJIMA	KEDAKA	TOTTORI	ITOZAKURA	SHIMANE	OKAYAMA	HIROSHIMA	OTHER
C	50%	6%	3%	13%	5%	8%	4%	11%

EBV		ACC		EBV percentiles for 0184X	
+0.8	birth weight (kg)	+1.5	75%	HEAVIER	
+9	200-day Wt (kg)	+9	60%	LIGHTER	
+14	400-day Wt (kg)	+13	60%	LIGHTER	
+18	600-day Wt (kg)	+15	58%	LIGHTER	
+1	milk (kg)	-3	48%	LOWER	
+0.4	eye muscle area (sq.cm)	-0.2	36%	SMALLER	
+0.1	IMF (%)	0.0	35%	LOWER	
+\$20	fullblood feedlot index	+\$6		LOWER	

**0184X** has been bred to **Shigeshigetani** once again and will be due in November if the breeding “takes” – if not, she will be sold as open and ready to breed or flush.

## LMR MS SANJIROU 9276W

LOT  
37
 registration no. **FB10460** birthdate **04/26/2009** scd **AA**

 sire **BAR R SANJIROU 4P FB5663** | **SANJIROU FB2501**  
**BAR R MISS FUKUTSURI 47K FB5098**

 dam **BR MS ITOMICHI/0602 4625 FB6249** | **BR ITOMICHI 0602 FB5100**  
**BR MS YASUFUKU 0645 FB5084**

GROUP	TAJIMA	KEDAKA	TOTTORI	ITOUZAKURA	SHIMANE	OKAYAMA	HIROSHIMA	OTHER
<b>D</b>	80%	2%	1%	8%	2%	3%	2%	2%

 2013 November WAGYU Group BREEDPLAN  
 based on 41,500 Wagyu Group herd

EBV	TRAIT	EBV	ACC	EBV percentiles for 9276W	
+0.8	birth weight (kg)	-0.8	57%	LIGHTER »	
+9	200-day Wt (kg)	+4	54%	« LIGHTER	
+14	400-day Wt (kg)	+4	54%	« LIGHTER	
+18	600-day Wt (kg)	+3	51%	« LIGHTER	
+1	milk (kg)	+2	48%	» HIGHER	
+0.4	eye muscle area (sq.cm)	-0.1	36%	SMALLER «	
+0.1	IMF (%)	+0.3	37%	HIGHER »	
+\$20	fullblood feedlot index	+\$5		« LOWER	

 BREED Avg. EBVs  
 2012 born calves

100 50 0

Born April of 2009, **LMR MS SANJIROU 9276W** is a linebred **Tajima** (80%) breeding female worth noting. Sired by LMCC herd sire **Bar R Sanjirou 4P**, **9276W** shows a promising **Itomichi** son and the incomparable **Yasufuku Jr.** on the maternal side of her pedigree. With 10 daughters of **Sanjirou 4P** onsite, we are excited about his potential as a dam sire. As it currently stands, **Sanjirou 4P** ranks as **#2 Dam Sire with an average 31.17% IMF with 8 carcasses analyzed** – see example at right.

Her dam **BR Ms Itomichi/0602 4625** is one of Lone Mountain's most productive breeders; and a testament is that she is 10 years old and pregnant again. With 13 calves and 63 viable embryos produced in just over five years, **4625** was one of the best investments we've made.

Two of **9276W's** sisters are in the sale: **2305Z** (by **Kitaguni Jr**) as Lot #46 and **9238Z** (by **LMR Jiro 711T**) as Lot #59. A full brother, **LMR Sanjirou 9240W**, was harvested and displayed a ribeye graded **AB50** and calculated to be **34.30% IMF**, as pictured.

**9276W** had a calf in 2012 and another in 2013 – she's never been flushed. She is exposed by AI to **Kitaguni Jr** and due in November if bred. She tested **Homozygous AA** for the **SCD Gene**.


**9339W YASUFUKU X SANJIROU 4P 46.4% IMF**

**9240W SANJIROU 4P X ITOMICHI-0602 34.3% IMF**

LOT  
38

## LMR MS FUKUTSURU 36H 721T

registration no. **FB7473** birthdate **04/26/2007** scd **VA**sire **BAR R FUKUTSURU 36H FB4235** JVP FUKUTSURU 068 FB2101  
METANI FB3125dam **BAR R 3P FB5703** SANJIROU FB2501  
MISS BAR R 2400H FB4210

GROUP	TAJIMA	KEDAKA	TOTTORI	ITOZAKURA	SHIMANE	OKAYAMA	HIROSHIMA	OTHER
<b>D</b>	73%	2%	0%	12%	1%	5%	2%	4%

2013 November WAGYU Group BREEDPLAN  
based on 41,500 Wagyu Group herd

EBV	TRAIT	EBV	ACC	EBV percentiles for 721T	
+0.8	birth weight (kg)	-0.6	75%	LIGHTER »	
+9	200-day Wt (kg)	0	65%	« LIGHTER	
+14	400-day Wt (kg)	+3	61%	« LIGHTER	
+18	600-day Wt (kg)	+2	60%	« LIGHTER	
+1	milk (kg)	-6	53%	« LOWER	
+0.4	eye muscle area (sq.cm)	+0.9	36%		LARGER »
+0.1	IMF (%)	-0.2	37%	« LOWER	
+\$20	fullblood feedlot index	+\$8		« LOWER	

BRED Avg. EBVs  
2012 born calves

100 50 0

One of a pair of sister **JVP Fukutsuru 068** granddaughters for sale, **LMR MS FUKUTSURU 36H 721T** was born April of 2007, as was her full sister **722T** who is also in the sale as Lot #39.

Sired by Jerry Reeves' **Bar R Fukutsuru 36H, 721T** shows **Sanjirou** and **TF Kikuhana** on her maternal side. These famous foundation sires round out her pedigree to the 73% **Tajima**, 12% **Itozakura** combination.

Her dam sire, **Sanjirou**, ranks #1 for REA with an average of 14.83 with 7 ribeyes measured by the USDA Inspector. And in that same study, **Sanjirou** ranks as the #4 Dam Sire in the 2014 LMR Sire Performance Study with an average IMF of 28.83% computed from actual images of 25 carcasses harvested by Lone Mountain. **Two Sanjirou-sired steers are pictured.**

Takeda's **Kikuhana** has the distinction of being grand-sired by **Dai 7 Itozakura**, who was - according to Kenichi Ono - the smartest economic investment among all Wagyu strains, known and respected both for his good daily weight gain, peaceful disposition and early maturation. Note also that **Kikuhana** is the sire of LMR herd sire **Toshiro 723T**. Expect these traits to follow suit down to this excellent breeding female and her progeny, one of whom (**LMR Ms Michifuku 3426A**) is also in the sale at Lot #44.

**721T**, having delivered a **Sanjirou** bull calf in March, is open and ready to breed or flush upon arrival at your ranch.



9304W SANJIROU X MICHIFUKU 38.88% IMF



9378W SANJIROU X KIKUYASU 400 33% IMF

**LOT  
39**



birthdate 04/27/2007

scd AA

JVP FUKUTSURU 068 FB2101  
METANI FB3125

SANJIROU FB2501  
MISS BAR R 2400H FB4210

GROUP	TAJIMA	KEDAKA	TOTTORI	ITOZAKURA	SHIMANE	OKAYAMA	HIROSHIMA	OTHER
D	73%	2%	0%	12%	1%	5%	2%	4%

based on 41,500 Wagyu Group herd

EBV	TRAIT	EBV	ACC	EBV percentiles for 722T	
+0.8	birth weight (kg)	+0.4	75%	» LIGHTER	
+9	200-day Wt (kg)	+5	64%	« LIGHTER	
+14	400-day Wt (kg)	+9	61%	« LIGHTER	
+18	600-day Wt (kg)	+11	59%	« LIGHTER	
+1	milk (kg)	-2	52%	« LOWER	
+0.4	eye muscle area (sq.cm)	+0.6	35%		» LARGER
+0.1	IMF (%)	-0.3	36%	« LOWER	
+\$20	fullblood feedlot index	-\$6		« LOWER	

**8183U SHIGESHIGETANI X MICHIFUKU 43.1% IMF**



**9390W TF ITOHANA 2 X MICHIFUKU 39.4% IMF**

**722T** delivered an **Itoshigenami TF148** heifer in December and is open as of this writing. **She has tested Homozygous AA for the SCD gene.**

## A black cow stands in a field of dry grass and straw. The cow has a yellow tag on its left ear and a white tag with the number 510 on its right ear. There is a white mark on its side. In the background, there are green trees and blue mountains. The text "Browns" is written in the bottom right corner.

GROUP	TAJIMA	KEDAKA	TOTTORI	ITOZAKURA	SHIMANE	OKAYAMA	HIROSHIMA	OTHER
C	55%	0%	0%	27%	6%	5%	6%	0%

BRED Avg. EBVs 2012 born calves		EBV	TRAIT	EBV	ACC	EBV percentiles for 1237Y	
		+0.8	birth weight (kg)	+1.6	77%	◀ HEAVIER	
		+9	200-day Wt (kg)	+9	67%	LIGHTER <	
		+14	400-day Wt (kg)	+13	69%	LIGHTER <	
		+18	600-day Wt (kg)	+18	65%	LIGHTER <	
		+1	milk (kg)	+3	53%	> HIGHER	
		+0.4	eye muscle area (sq.cm)	+1.3	45%	LARGER >	
		+0.1	IMF (%)	+0.2	48%	>> HIGHER	
		+\$20	fullblood feedlot index	+\$18		LOWER <	

100
50
0

9350W TF148 X SANJIROU 4P 33% IMF

## LMR MS SHIGESHIGETANI 2429Z

LOT  
41
 registration no. **FB14933**      birthdate **10/29/2012**      scd **VV**

 sire SHIGESHIGETANI FB2907  
 HARUKI II FB1614  
 SUZUTANI FB1617

 dam LMR MS KENICHI 0184X FB11477  
 LMR KENICHI 807T FB8608  
 BR MS TAKAZAKURA 9640 FB4826

GROUP	TAJIMA	KEDAKA	TOTTORI	ITOZAKURA	SHIMANE	OKAYAMA	HIROSHIMA	OTHER
D	62%	9%	2%	7%	2%	4%	5%	9%

 2013 November WAGYU Group BREEDPLAN  
 based on 41,500 Wagyu Group herd

EBV	TRAIT	EBV	ACC	EBV percentiles for 2429Z	
+0.8	birth weight (kg)	-0.1	75%	LIGHTER >	
+9	200-day Wt (kg)	+5	64%	< LIGHTER	
+14	400-day Wt (kg)	+10	65%	LIGHTER <	
+18	600-day Wt (kg)	+13	59%	LIGHTER <	
+1	milk (kg)	-	-		
+0.4	eye muscle area (sq.cm)	-	-		
+0.1	IMF (%)	-	-		
+\$20	fullblood feedlot index	+\$18		LOWER <	

 BREED Avg. EBVs  
 2012 born calves

100      50      0

## LMR MS SHIGESHIGETANI 2429Z is

daughter to one amazing dam: a promising breeding female, **LMR Ms Kenichi 0184X** is also in the sale (Lot #36). Dam **0184X** brings some magical marbling from the **Michifuku** and **Monjiro**-line showing up in her pedigree, and from their prized propensity for meat quality and texture.

**World K's Shigeshigetani** has sired numerous LMR steers, with an average IMF% of 30.57% - and counting. **To see what these carcasses look like and why his average IMF is what it is and what he might do for your herd as Dam Sire, see photos at right.** Lone Mountain considers **Shigeshigetani** to be one of the foundation sires that we are actively using in our breeding program. And with a LMR herd sire **Kenichi 807T** acting as dam sire - we expect great results in the near future.



8183U SHIGESHIGETANI X MICHIFUKU 43.1% IMF



9225W SHIGESHIGETANI X MICHIFUKU 34.0% IMF

Born October 2012, **2429Z** doesn't fall far from the tree: her dam scanned at 6.53% IMF and she herself scanned at 6.6 % IMF. The well-rounded breeding of **2429Z** is showing up in full force. Her 62% **Tajima** is rounded by a sprinkling of many other bloodlines, including **Takazakura**.

**2429Z** sells as a 17 month-old open heifer, ready to breed or flush.

sire TF ITOHANA 2 FB2294

dam BR MS MICH-1628 4630 FB6518	BR MICHIFUKU 1628 FB5836 BR MS KIKUHANA 8620 FB4481
---------------------------------	--

**2013 November Wagyu Group BREEDPLAN**  
based on 41,500 Wagyu Group herd

EBV	TRAIT	EBV	ACC	EBV percentiles for 1269Y
+0.8	birth weight (kg)	+1.3	54%	HEAVIER <<
+9	200-day Wt (kg)	+8	53%	LIGHTER <<
+14	400-day Wt (kg)	+13	53%	LIGHTER <<
+18	600-day Wt (kg)	+16	53%	LIGHTER <<
+1	milk (kg)	-	-	
+0.4	eye muscle area (sq.cm)	+0.3	41%	SMALLER <
+0.1	IMF (%)	-0.1	41%	<< LOWER
+\$20	fullblood feedlot index	+\$6		<< LOWER

100 50 0

With one bull calf under her belt, **1269Y** has been artificially inseminated to **Yojimbo** and due in November if confirmed bred – if not, she will be sold open and ready to flush or breed, as the buyer may choose.

## LMR MS ITOMICHI 1/2 1283Y

LOT  
43

registration no. **FB13111** birthdate **07/01/2011** scd **VA**

sire **TF ITOMICHI 1-2 FB2126**  
ITOMICHI J1158 FB500  
DAI 2 KINTOU J337756 FB464

dam **LMR MS MICHIFUKU 628S FB6639**  
MICHIFUKU FB1615  
CHR MS HIRASHIGE 055J FB4832

GROUP	TAJIMA	KEDAKA	TOTTORI	ITOUZAKURA	SHIMANE	OKAYAMA	HIROSHIMA	OTHER
<b>C</b>	39%	5%	2%	34%	7%	7%	7%	0%

## 1250Y x 1283Y

GROUP	TAJIMA	KEDAKA	TOTTORI	ITOUZAKURA	SHIMANE	OKAYAMA	HIROSHIMA	OTHER
<b>C</b>	61%	3%	1%	19%	4%	4%	4%	3%

Historically, adding **TF Itomichi 1-2** progeny to your herd was an astute economic investment, bringing increased mature size, milk (**in the top 1% for BREEDPLAN's Milk EBV**) and growth rate without reducing marbling. In addition, **TF Itomichi 1-2**, is ranked as the #3 Dam Sire in the 2014 Sire Performance Study (averaging 28.96% IMF), besting both **Michifuku** and **Sanjiro**. That's a good summary of **LMR MS ITOMICHI 1-2 1283Y** as evidenced by the astounding EBVs proving out his mothering ability while keeping the marbling propensity intact. **Evidence of Itomichi 1-2's ability to produce dam sires is pictured at right.**

Born July 2011, **1283Y** includes **Michifuku** and **Hirashigetayasu ETJ001** in her pedigree on the maternal side, augmenting all of the best qualities of the Itomichi line. Her dam is **LMR Ms Michifuku 628S** – an outstanding flush cow with a 400-day scan of near-tops 6.48% IMF – who has produced 16 fabulous offspring. Some have sold private treaty. Some were sold into the Lone Mountain Wagyu beef program, resulting in a range of super Prime beef carcasses. Some are outstanding flush cows; each with near-tops IMF scans comparable to their dam.

One half-sister by Kitaguni Jr., **1258Y**, produced 20 viable embryos in her first and only flush so far. Another sister, by **Kitaguni Jr.**, **1265Y** produced 12 embryos in her only flush. **1283Y** has not yet been flushed – perhaps she will do even better than that. Three of her sisters are also in the sale: **1213Y** (Lot #100); **2425Z** (Lot #77); and **1292Y** (Lot #58).

**1283Y** is pregnant by our young and brilliantly marbled **Yasufuku Jr** herd sire, **LMR Masahiko 1250Y**, and due in August.

2013 November WAGYU Group BREEDPLAN  
based on 41,500 Wagyu Group herd

EBV	TRAIT	EBV	ACC	EBV percentiles for 1283Y	
+0.8	birth weight (kg)	+2.3	62%	« HEAVIER	HEAVIER »
+9	200-day Wt (kg)	+16	59%		HEAVIER »
+14	400-day Wt (kg)	+23	58%		HEAVIER »
+18	600-day Wt (kg)	+28	57%		HIGHER »
+1	milk (kg)	+5	55%		LARGER »
+0.4	eye muscle area (sq.cm)	+1.5	42%		HIGHER
+0.1	IMF (%)	+0.1	42%		» HIGHER
+\$20	fullblood feedlot index	+\$24			

BREED Avg. EBVs  
2012 born calves



9240W SANJIROU 4P X ITOMICHI-0602 34.3% IMF

LOT  
44

## LMR MS MICHIFUKU 3426A


 registration no. **FB15688**      birthdate **03/26/2013**      scd **AA**

 sire MICHIFUKU FB1615      MONJIRO 11550 FB201  
    MICHIKO J655635 FB215

 dam LMR MS FUKUTSURU 36H 721T FB7473      BAR R FUKUTSURU 36H FB4235  
    BAR R 3P FB5703

GROUP	TAJIMA	KEDAKA	TOTTORI	ITAZAKURA	SHIMANE	OKAYAMA	HIROSHIMA	OTHER
<b>B</b>	87%	1%	0%	6%	0%	2%	1%	2%

 2013 November WAGYU Group BREEDPLAN  
 based on 41,500 Wagyu Group herd

EBV	TRAIT	EBV	ACC	EBV percentiles for 3426A	
+0.8	birth weight (kg)	0.0	64%	LIGHTER »	
+9	200-day Wt (kg)	+2	60%	« LIGHTER	
+14	400-day Wt (kg)	+3	59%	« LIGHTER	
+18	600-day Wt (kg)	0	59%	« LIGHTER	
+1	milk (kg)	-9	57%	« LOWER	
+0.4	eye muscle area (sq.cm)	+0.7	50%		» LARGER
+0.1	IMF (%)	+0.2	50%		» HIGHER
+\$20	fullblood feedlot index	-			

 BREED Avg. EBVs  
 2012 born calves

100      50      0

Born March in 2013, **LMR MS MICHIFUKU 3426A** is a classically bred heifer and could be the next mega-marbling mother to add to your herd. A virgin and ready to begin a long and productive breeding life, **3426A** has an 87% **Tajima** legacy to bring to fruition in your breeding program.

Wagyu authority David Blackmore said this about **Michifuku**: "His sire, **Monjiro** (DG 0.87 kg, BMS +3.3) is an excellent sire who received an honorable prize in the Fukushima Zenkyo Competition and his calves have received excellent demand in the market for his offspring's meat qualities. His grand sire is **Tanishige** (DG 0.92 kg, BMS 3.1, Yield Grade 72.7%) who was produced with the inbreeding of **Tajiri** descent. **Tanishige's** high rating in yield grade shows an excellent performance to his abilities as being a meat producer. From his well-balanced extended pedigree, **Michifuku** is an all-around genetic combination of high meat quality, body development and fertility."

With **Monjiro** on the top and the bottom side of the pedigree, she will surely bring great carcass quality to bear.

**3426A's** dam is **LMR Ms Fukutsuru 36H 721T** who is also in the sale as Lot #38 and showed up with very promising 5.59% IMF on her 400-day ultrasound scan.

With the aid of the **Fukutsuru JVP 068** and **Sanjirou** nestled in her pedigree, she is sure to be the next hot ticket on your land.

**3426A** has tested Homozygous AA for the SCD gene.

**LOT  
45**



birthdate 03/15/2007

scd AA

SANJIROU FB2501

BAR R MISS FUKUTSURU 47K FB5098

MICHIFUKU FB1615

JVP MS KIKUCHISA 19E FB3098

GROUP	TAJIMA	KEDAKA	TOTTORI	ITOZAKURA	SHIMANE	OKAYAMA	HIROSHIMA	OTHER
B	92%	0%	0%	4%	0%	4%	0%	0%

based on 41,500 Wagyu Group herd

EBV	TRAIT	EBV	ACC	EBV percentiles for 707T			
+0.8	birth weight (kg)	+1.2	79%	HEAVIER <<			
+9	200-day Wt (kg)	+7	73%	LIGHTER <<			
+14	400-day Wt (kg)	+6	72%	<< LIGHTER			
+18	600-day Wt (kg)	+9	68%	<< LIGHTER			
+1	milk (kg)	-3	55%	<< LOWER			
+0.4	eye muscle area (sq.cm)	+0.7	47%	> LARGER			
+0.1	IMF (%)	+0.3	49%	HIGHER >			
+\$20	fullblood feedlot index	+\$11		<< LOWER			

**707T** was flushed in February (her first flush in two years) and kept open for the new and lucky owner. **She has tested Homozygous AA for the SCD gene.**



9310W YASUFUKU JR X 4P - 42.1% IMF



9339W YASUFUKU X SANJIROU 4P 46.4% IMF

## A black and white photograph of a dark-colored cow, possibly a Jersey or Guernsey, standing in a field. The cow is facing left and is casting a shadow on the ground. The background shows a line of trees and a fence. A signature "Browny ©" is visible in the lower right corner of the image.

8166U KITAGUNI JR X YASUFUKU JR 50.2% IMF

## LMR MS TOSHIRO 1/3 9334W

LOT  
47
 registration no. **FB10752**      birthdate **07/07/2009**      scd **VA**

 sire LMR TOSHIRO 1/3 (723T) FB7475      TF KIKUHANA FB2127  
    REIKO J1883963 FB2424

 dam LMR MS SANJIROU 4P 704T FB7452      BAR R SANJIROU 4P FB5663  
    BR MS TAKAZAKURA 0652 FB5076

GROUP	TAJIMA	KEDAKA	TOTTORI	ITOZAKURA	SHIMANE	OKAYAMA	HIROSHIMA	OTHER
<b>C</b>	46%	6%	1%	31%	5%	5%	2%	5%

 2013 November WAGYU Group BREEDPLAN  
 based on 41,500 Wagyu Group herd

EBV	TRAIT	EBV	ACC	EBV percentiles for 9334W	
+0.8	birth weight (kg)	+1.3	76%	HEAVIER <<	
+9	200-day Wt (kg)	+10	62%		HEAVIER >>
+14	400-day Wt (kg)	+28	60%		HEAVIER >>
+18	600-day Wt (kg)	+29	58%		HIGHER >>
+1	milk (kg)	+4	39%		
+0.4	eye muscle area (sq.cm)	-	-		
+0.1	IMF (%)	-	-		
+\$20	fullblood feedlot index	+\$15		LOWER <<	

100      50      0

Born July 2009, **LMR MS TOSHIRO 1/3 9334W** is sired from our own **LMR Toshiro 1/3 723T**. With a maternal side **Bar R Sanjirou 4P** and **Takazakura, 9334W** is an LMR homegrown excellent growth animal with fantastic marbling to boot. Check out her EBV for growth and for milk, and you see this is the mothering powerhouse you've been waiting for.

Remember that **Toshiro 723T** is the #1 Sire for Carcass Weight (average 1058 lbs.) in the 2014

LMR SPS, and #4 for both IMF% (average 31.26% based on 10 carcasses) and by USDA Grade (average AB50 based on 10 LMR carcasses). In addition, note that **Toshiro 723T** ranks in BREEDPLAN's top 5% for Growth (Weights) as measured against almost 4,000 Wagyu sires. **9236W** was a steer sired by Toshiro with 43.88% IMF – see photo above.

**9334W's** dam is **LMR Ms Sanjirou 4P 704T** who brought us two steers that produced marbling beef in the mid-30s IMF%, including **9334W's** full brother, **LMR Toshiro 9341W**, pictured. A daughter of **9334W** by **Kitaguni Jr (3423A)** is in the sale at Lot #15.

**9334W** delivered a **JVP Fukutsuru 068** bull calf in March and is open - ready to flush or breed as you like when she arrives on your property.



9236W TOSHIRO X TAKAZAKURA-0606 43.88% IMF



9341W TOSHIRO X SANJIROU 4P 37% IMF

**LMR MS YOJIMBO 2364Z**



registration no. **FB14528**      birthdate **06/16/2012**      scd **AA**

sire LMR YOJIMBO 634S FB6761

dam LMR MS HIRASHIGETAYASU 9221W FB9523	HIRASHIGETAYASU ETJ001 FB670 BAR R MS SANJIROU 69P FB5970
--	--

GROUP	TAJIMA	KEDAKA	TOTTORI	ITOZAKURA	SHIMANE	OKAYAMA	HIROSHIMA	OTHER
D	71%	12%	4%	0%	0%	8%	1%	4%

– 2013 November WAGYU Group BREEDPLAN  
based on 41,500 Wagyu Group herd

EBV		ACC		EBV percentiles for 2364Z	
+0.8	birth weight (kg)	+0.5	75%	» LIGHTER	
+9	200-day Wt (kg)	+6	66%	« LIGHTER	
+14	400-day Wt (kg)	+7	62%	« LIGHTER	
+18	600-day Wt (kg)	+10	59%	« LIGHTER	
+1	milk (kg)	-	-		
+0.4	eye muscle area (sq.cm)	+0.9	36%	LARGER »	
+0.1	IMF (%)	0.0	36%	LOWER «	
+\$20	fullblood feedlot index	+\$9		« LOWER	

100 50 0

Born June of 2012, **LMR MS YOJIMBO 2364Z** is daughter of **LMR Yojimbo 634S**, and it bears repeating he was the sale topper at our 2008 sale (\$35,000), sold to Monarch Farms in Louisiana. With that **Yojimbo** presence on the paternal side, and the famous **Fukutsuru 068** and winning **Yasufuku J930** embedded within that, **2364Z** is a no brainer. Add in the **Hirashigetayasu ETJ001** and **Sanjirou** on the maternal side, and that 'bang for the buck' reaches new heights.

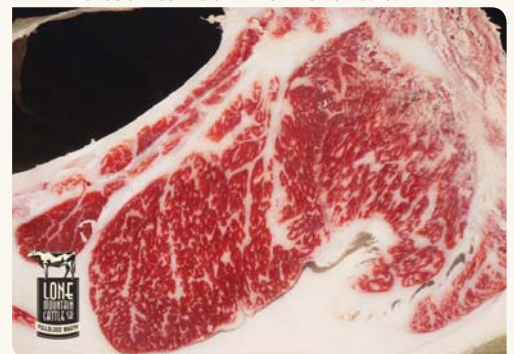
We can only speculate about **Yojimbo's** future as Dam Sire, but if we look at his initial results in the Lone Mountain Sire Performance Study, it looks promising: average 29.64% IMF with 12 carcass images analyzed - less than 1% difference between **Yojimbo** and **Shigesigetani**. And the average USDA grade is AB50. There is potential there for the makings of a great Dam Sire. **Yojimbo has produced specimens like the ones shown at right – weighing in at 40.2% and 38.7% IMF.**

**2364Z's** dam is **LMR Ms Hirashigetayasu 9221W** who scored a virtually insurmountable 7.53% IMF 400-day ultrasound scan. Her 12 viable embryos from 2 flushes produced a full sister **2356Z** (in the sale at Lot #26). Half-sib by **Haruki II 2367Z** is also in the sale at Lot #92. This little slice of **Kedaka** in this wonderful breeding female will mean great beef yield and growth with that famed **Tajima** meat quality.

**2364Z** is exposed to **Shigeshigetani** and if bred will calve in November. If not, she will sell open and ready to breed or flush. **Note that she tested Homozygous AA for the SCD Gene.**



8155U YOJIMBO X MICHIFUKU 40.2% IMF



9274W YOJIMBO X MICHIFUKU 38.70% IMF

## LMR MS TAK-3612 741T

LOT  
49
 registration no. **FB7772**      birthdate **09/24/2007**      scd **AA**

 sire **BR TAKAZAKURA-0606 3612 FB5972**      **BR TAKAZAKURA 0606 FB5101**  
    **BR MS SANJIROU 0656 FB5091**

 dam **BR MS MICH-1628 4630 FB6518**      **BR MICHIFUKU 1628 FB5836**  
    **BR MS KIKUHANA 8620 FB4481**

GROUP	TAJIMA	KEDAKA	TOTTORI	ITOUZAKURA	SHIMANE	OKAYAMA	HIROSHIMA	OTHER
<b>C</b>	66%	6%	2%	13%	1%	7%	2%	4%

 2013 November WAGYU Group BREEDPLAN  
 based on 41,500 Wagyu Group herd

EBV	TRAIT	EBV	ACC	EBV percentiles for 741T	
+0.8	birth weight (kg)	+0.7	53%	» LIGHTER	
+9	200-day Wt (kg)	+7	47%	LIGHTER <<	
+14	400-day Wt (kg)	+10	46%	LIGHTER <<	
+18	600-day Wt (kg)	+15	44%	LIGHTER <<	
+1	milk (kg)	-3	40%	<< LOWER	
+0.4	eye muscle area (sq.cm)	-	-		
+0.1	IMF (%)	-0.1	30%	<< LOWER	
+\$20	fullblood feedlot index	+\$7		<< LOWER	

 BREED Avg. EBVs  
 2012 born calves

100      50      0

Born in September of 2007, **LMR MS TAK-3612 741T** is a six-year old fertile breeding female to add to your herd. She is an outstanding donor cow, producing 46 viable embryos over the course of 5 flushes - averaging 9 per flush. And she's just stepping into her productive prime. And consider that her dam **4630** had an even more outstanding flush history, producing 54 viable embryos in just 4 flushes, that's 13-14 per flush.

Sired by a **Takazakura** grandson, **741T** is another one of our animals graced with **TF Kikuhana** genetics, sire of **LMR Toshiro 723T**. **Kikuhana** was grand-sired by **Dai 7 Itozakura** himself, who was - according to Kenichi Ono - the smartest economic investment among all Wagyu strains, known and respected both for his good daily weight gain, peaceful disposition and early maturation. **Dai 7 Itozakura** sired and grand-sired many famous Wagyu, including **Itomichi J1158**, **Kitaguni 7 No 8** and **Itozurudo TF151**.

**741T** also shows two instances of **Monjiro** genetics in her pedigree - **Sanjiro** on the paternal side and **Michifuku** on the maternal. Expect many of these heritable traits to follow suit down to this excellent breeding female and her progeny.

**741T** has a daughter by **Shigeshiigetani, 2456Z**, in the sale as Lot #35. Two sisters of **741T** by **TF Itohana 2** are also in the sale: **1269Y** (Lot #42), and **1270Y** (Lot #29).

**741T** is bred to our herd sire **LMR Toshiro 723T** and due in August. **She has tested Homozygous AA for the SCD gene.**

LOT  
50

## LMR MS TAKAZAKURA 9384W

registration no. **FB10934** birthdate **09/15/2009** scd **VA**sire **TAKAZAKURA FB2892**  
TAKAEI 1412 FB609  
DAI NI SAKURA 7 FB612dam **BR MS MICH-1628 4628 FB7339**  
BR MICHIFUKU 1628 FB5836  
BR MS KIKUHANA 8621 FB4482

GROUP	TAJIMA	KEDAKA	TOTTORI	ITOZAKURA	SHIMANE	OKAYAMA	HIROSHIMA	OTHER
<b>C</b>	46%	5%	1%	12%	1%	16%	6%	12%

2013 November WAGYU Group BREEDPLAN  
based on 41,500 Wagyu Group herd

EBV	TRAIT	EBV	ACC	EBV percentiles for 9384W	
+0.8	birth weight (kg)	+1.2	59%	HEAVIER <	
+9	200-day Wt (kg)	+10	65%		> HEAVIER
+14	400-day Wt (kg)	+19	66%		HEAVIER >
+18	600-day Wt (kg)	+23	60%		>> HEAVIER
+1	milk (kg)	-	-		
+0.4	eye muscle area (sq.cm)	-0.9	47%	<< SMALLER	
+0.1	IMF (%)	-0.2	49%	<< LOWER	
+\$20	fullblood feedlot index	+\$2		<< LOWER	

100 50 0

Born September of 2009, **LMR MS**

**TAKAZAKURA 9384W** is an inordinately smart investment for the astute breeder seeking a balanced breeding female. **9384W** not only achieved a resounding 6.13% IMF on her 400-day ultrasound scan, but also tracks good growth and scrotal size in her EBV. Taking a closer look at her pedigree, you will see why.

With **Takazakura** on her paternal side, and a **Michifuku** son and **TF Kikuhana** both on her maternal side, **9384W** brings the best of the **Tajima** and **Itozakura** lines in spades. Remember that **Kikuhana** was grand-sired by **Dai 7 Itozakura** who, according to Kenichi Ono, became known as the smartest economic investment among all Wagyu strains, known for his good daily weight gain, peaceful disposition and early maturation. And **Michifuku's** legacy is legendary.

**9384W's** dam is **BR Ms Mich-1628 4628** who has produced a great grouping of feedout steers for the Lone Mountain Fullblood Beef operation - with two brothers of **9384W**, scoring well above double USDA Prime: **LMR Itohana 9393W** grading **VAB80** and **LMR Itohana 9390W** scoring a potent 39% IMF (pictured).

**9384W** is open and will be ready to flush or breed as you like it upon arriving on your property.



9390W TF ITOHANA 2 X MICHIFUKU 39% IMF



9393W ITOHANA X MICH-1628 30% IMF

## LMR MS SHIGESHIGETANI 1207Y

LOT  
51

registration no. **FB11917** birthdate **03/06/2011** scd **VA**

sire **SHIGESHIGETANI FB2907**  
HARUKI II FB1614  
SUZUTANI FB1617

dam **LMR MS SANJIROU 713T FB7460**  
SANJIROU FB2501  
BR MS TAKAZAKURA 0652 FB5076

GROUP	TAJIMA	KEDAKA	TOTTORI	ITOKAZURA	SHIMANE	OKAYAMA	HIROSHIMA	OTHER
<b>D</b>	76%	6%	0%	2%	0%	5%	5%	6%

2013 November WAGYU Group BREEDPLAN  
based on 41,500 Wagyu Group herd

EBV	TRAIT	EBV	ACC	EBV percentiles for 1207Y	
+0.8	birth weight (kg)	+0.3	76%	» LIGHTER	
+9	200-day Wt (kg)	+8	66%	LIGHTER «	» HEAVIER
+14	400-day Wt (kg)	+15	62%	LIGHTER «	» HEAVIER
+18	600-day Wt (kg)	+18	60%	LIGHTER «	» HEAVIER
+1	milk (kg)	-	-	» LARGER	
+0.4	eye muscle area (sq.cm)	+0.7	37%	» HIGHER	
+0.1	IMF (%)	+0.2	38%	» HIGHER	
+\$20	fullblood feedlot index	+\$21		» HIGHER	

100 50 0

Born in March 2011, **LMR MS SHIGESHIGETANI 1207Y** was sired by **WKS Shigeshigetani**, one of the strongest marbling sires in World K's Bull battery.

**Shigeshigetani** descends from **Shigeshigenami** who was described by Prof. Kenichi Ono as the bull most representative of "meat-quality Wagyu", whose assets include a high degree of marbling and a high probability of good characteristics being passed down to progeny.

**Shigeshigetani** will undoubtedly have a high ranking on the Dam Sire list as the Sire Performance Study (SPS) as his dams' progeny work their way through the feeding process. **See an example of Shigeshigetani's beautiful marbling pictured.** Adding this **Shigeshigetani** female – and her **Sanjirou/Takazakura** maternal side – will surely pay off in your herd production.



8183U SHIGESHIGETANI X MICHIFUKU 43.1% IMF



9390W TF ITOHANA 2 X MICHIFUKU 39.4% IMF

**1207Y's** mother, **LMR Sanjirou 713T**, has produced a dozen progeny for Lone Mountain, including a steer by **TF Itohana 2 (9390W)** whose computer-calculated IMF measured 39.4%, as pictured.

**713T** sells in this sale as Lot #33. In addition, **1207Y's** sister by **ETJ001**, the great Wagyu growth sire, **LMR Ms Hirashigetayasu 1282Y** is for sale in this catalog as Lot #13.

**1207Y** has been AI'd to **Kitaguni Jr.** and if bred, should calve in November 2014.

## A black and white photograph of a young black cow standing in a field. The cow is facing left. A watermark 'Brownsy ©' is visible in the bottom right corner of the image.

sire LMR KENICHI 807T FB8608

dam LMR MSTAK-3612 735T FB7767

GROUP	TAJIMA	KEDAKA	TOTTORI	ITOZAKURA	SHIMANE	OKAYAMA	HIROSHIMA	OTHER
D	65%	4%	2%	14%	5%	3%	2%	6%

2013 November WAGYU Group BREEDPLAN  
based on 41,500 Wagyu Group herd

EBV	TRAIT	EBV	ACC	EBV percentiles for 2414Z	
+0.8	birth weight (kg)	+1.8	75%	◀ HEAVIER	
+9	200-day Wt (kg)	+11	65%	» HEAVIER	
+14	400-day Wt (kg)	+10	66%	LIGHTER ◀	
+18	600-day Wt (kg)	+16	61%	LIGHTER ◀◀	
+1	milk (kg)	-	-		
+0.4	eye muscle area (sq.cm)	+1.6	36%	LARGER »	
+0.1	IMF (%)	-0.1	35%	◀◀ LOWER	
+\$20	fullblood feedlot index	+\$9		◀◀ LOWER	

**2414Z** is an 18-month old open heifer, ready to be bred or flushed.

## LMR TOMIKO 782T

LOT  
53

registration no. **FB8759** birthdate **11/09/2007** scd **VA**

sire BR MICHIFUKU 1604 FB6152  
MICHIFUKU FB1615  
BR MS MICHIFUKU T4E 8605 FB4473

dam BR MS TAKAZAKURA 0652 FB5076  
TAKAZAKURA FB2892  
JVP MS FUKUKANE 05E FB3094

GROUP	TAJIMA	KEDAKA	TOTTORI	ITOZAKURA	SHIMANE	OKAYAMA	HIROSHIMA	OTHER
<b>D</b>	71%	3%	1%	3%	0%	10%	3%	9%

2013 November WAGYU Group BREEDPLAN  
based on 41,500 Wagyu Group herd

EBV	TRAIT	EBV	ACC	EBV percentiles for 782T	
+0.8	birth weight (kg)	+0.2	75%	» LIGHTER	
+9	200-day Wt (kg)	+5	66%	« LIGHTER	» LIGHTER
+14	400-day Wt (kg)	+13	62%	LIGHTER «	» LIGHTER
+18	600-day Wt (kg)	+14	60%	LIGHTER «	» LIGHTER
+1	milk (kg)	-4	50%	« LOWER	» HIGHER
+0.4	eye muscle area (sq.cm)	-0.4	38%	« SMALLER	» HIGHER
+0.1	IMF (%)	+0.1	38%	« LOWER	» HIGHER
+\$20	fullblood feedlot index	+\$8		« LOWER	» HIGHER

100 50 0

Born November of 2007, **LMR TOMIKO 782T** is a 71% **Tajima** breeding powerhouse that comes from a family of strong breeding females. Sired by a potent **Michifuku** son, and with well-balanced **Takazakura** and infamous **JVP 068** on her maternal side, **782T** is the full package pedigree.

Her dam is **BR Ms Takazakura 0652** whose progeny are making quite a splash on these pages: **629S**, a sister of **782T**, has a set of embryos in the sale at Lot #103; **782T's** sister **1282Y** is in the sale at Lot #13; another sister, the incomparable **713T** is in the sale at Lot #33.

**782T's** dam, **0652**, also had a 10-embryo average per flush, producing 78 viable embryos over 8 flushes. A flush of **0652** was sold in 2008, and she produced for the lucky buyer 17 embryos with sexed **Yojimbo** semen!

**0652** was one of the first 7 females purchased by Lone Mountain from Wagyu breeder and mentor, Gerry Pittenger, back in 2005. She produced 30 offspring in her 4 years at Lone Mountain, including two full brothers of **782T**: **LMR Kagemusha 639S** (former LMR herd sire) and **LMR Kagemusha-2 638S** - both sold at the 2008 LMR Production Sale.

**782T** has had 4 offspring (in years: 2010; 2011; 2012; and 2013). She has not been flushed. She is exposed to **Itoshigenami TF148** and due in August.



LMR KAGEMUSHA 639S



LMR KAGEMUSHA-2 638S

## A black and white photograph of a dark-colored cow, possibly a Brahman, standing in a field. The cow is facing left, and its shadow is cast on the ground. The background features a line of trees and distant mountains under a clear sky. A small, faint watermark is visible in the lower right corner of the image.

8157U KITAGUNI X SANJIROU 34.2% IMF

**LOT  
55**



birthdate 09/22/2011

scd **VA**

ITOMICHI J1158 FB500

DAI 2 KINTOU J337756 FB464

BR TAKAZAKURA-0606 3612 FB5972

BR MS ITOMICHI/0602 3655 FB6516

GROUP	TAJIMA	KEDAKA	TOTTORI	ITOZAKURA	SHIMANE	OKAYAMA	HIROSHIMA	OTHER
C	42%	2%	1%	32%	7%	6%	8%	2%

2013 November WAGYU Group BREEDPLAN  
based on 41,500 Wagyu Group herd

EBV	TRAIT	EBV	ACC	EBV percentiles for 1410Y	
+0.8	birth weight (kg)	+1.6	60%	« HEAVIER	HEAVIER »
+9	200-day Wt (kg)	+13	58%		» HEAVIER
+14	400-day Wt (kg)	+18	59%		HEAVIER »
+18	600-day Wt (kg)	+25	56%		» HIGHER
+1	milk (kg)	+3	51%		LARGER »
+0.4	eye muscle area (sq.cm)	+1.5	40%		
+0.1	IMF (%)	-0.2	41%	« LOWER	
+\$20	fullblood feedlot index	+\$12		« LOWER	

**1410Y** is open and ready to be bred again or flushed.



9391W TF148 X ITOMICHI 1-2 35.20% IMF



9394W TF148 X ITO-0602 30.14% IMF

LOT  
56

## LMR MS HARUKI 0191X


 registration no. **FB11483**      birthdate **09/14/2010**      scd **AA**

 sire **HARUKI II FB1614**      **MONJIRO 11550 FB201**  
    **SAKURA 2 J741638 FB206**

 dam **BR MS SANJIROU 0656 FB5091**      **SANJIROU FB2501**  
    **MISS BAR R 301H FB4208**

GROUP	TAJIMA	KEDAKA	TOTTORI	ITOUZAKURA	SHIMANE	OKAYAMA	HIROSHIMA	OTHER
<b>D</b>	72%	12%	0%	2%	0%	2%	6%	6%

 2013 November WAGYU Group BREEDPLAN  
 based on 41,500 Wagyu Group herd

EBV	TRAIT	EBV	ACC	EBV percentiles for 0191X	
+0.8	birth weight (kg)	-0.9	77%		LIGHTER »
+9	200-day Wt (kg)	+12	68%		» HEAVIER
+14	400-day Wt (kg)	+18	68%		» HEAVIER
+18	600-day Wt (kg)	+22	66%		» HEAVIER
+1	milk (kg)	-2	56%	« LOWER	
+0.4	eye muscle area (sq.cm)	+1.6	46%		LARGER »
+0.1	IMF (%)	+0.3	46%		HIGHER »
+\$20	fullblood feedlot index	+\$34			HIGHER »

100      50      0

This may be the most balanced breeding female available today! **LMR MS HARUKI 0191X** ranks among the top 5% for Fullblood Feedlot Index (\$FFI). Born September 2010, **0191X** is a great donor prospect: 22 viable embryos in her first three flushes. And as evidenced by her EBV, this animal will bring fast growth and a large eye muscle area. The above may seem surprising since **0191X** is a classically **Monjiro** linebred female: three of the four lines in the pedigree leading back to **Monjiro**.

**Haruki II** is known as a balanced sire, a **Monjiro** son famous for great marbling and equally phenomenal growth. As you may recall, **Monjiro** was auctioned in Japan for \$160,000. With an IMF% 400-day scan of 5.65% and **Michifuku** lining up on the maternal side with **Sanjirou**, **019X** will bring dividends to a producer's beef business bottom line. Power in the blood, as Mr. Danekas would surely say.

**BR Ms Sanjirou 0656**, **0191X's** dam, is a product of a half-sib mating and another prolific LMR cow who has produced 18 calves, including a **34.2% IMF Kitaguni Jr steer** (see photo). Longevity is another strong suit of this family, with **0656** going on 14 years old and pregnant with another **Kitaguni Jr** calf due in August 2014.

**0191X** has been AI'd to **Takazakura** and will be due in November, if bred. Otherwise, she will sell open and ready to breed or flush. **She tested Homozygous AA for the SCD gene.**



8157U KITAGUNI X SANJIROU 34.2% IMF

**LOT  
57**



registration no. **FB14944**

birthdate 11/20/2012

scd **VA**

sire LMR HIRO 0195X FB11484

HARUKI II FB1614  
BR MS SANJIROU 0656 FB5091

dam LMR MS YOJIMBO 0166X FB12371

LMR YOJIMBO 634S FB6761  
BR MS TAK-0606 4622 FB6247

GROUP	TAJIMA	KEDAKA	TOTTORI	ITOZAKURA	SHIMANE	OKAYAMA	HIROSHIMA	OTHER
D	68%	8%	1%	7%	0%	4%	4%	7%

2013 November WAGYU Group BREEDPLAN  
based on 41,500 Wagyu Group herd

BRED Avg. EBVs 2012 born calves		EBV	TRAIT	EBV	ACC	EBV percentiles for 2443Z	
	+0.8		birth weight (kg)	+0.3	67%		» LIGHTER
	+9		200-day Wt (kg)	+6	61%	« LIGHTER	
	+14		400-day Wt (kg)	+10	55%	LIGHTER «	
	+18		600-day Wt (kg)	+14	53%	LIGHTER «	
	+1		milk (kg)	-	-		
	+0.4		eye muscle area (sq.cm)	-	-		
	+0.1		IMF (%)	-	-		
	+\$20		fullblood feedlot index	+\$18			LOWER «

A promising **Hiro 0195X** daughter, **LMR MS HIRO 2443Z** has a good balance between growth and marbling performance. This is not surprising when taking a gander at her strong pedigree.

Born November 2012, this 15-month-old heifer is sired by our potent herd bull **LMR Hiro 0195X**. **0195X** is deeply linebred to **Sanjirou/Monjiro**; is a young, potent and powerful bull; is being used heavily at a LMR; and appears in the top 10% for Ribeye Area EBV. With 72% **Tajima** and 12% **Kedaka** genetics, **Hiro 0195X** is a Group "D" sire, with great potential to add phenomenal carcass characteristics to his offspring.

On her maternal side, **2443Z** is blessed with **Yojimbo**, the top-selling Wagyu sire at ORigen, and his outstanding pedigree credentials: **Fukutsuru 068 (#1 Marbling Sire in US Wagyu Sire Summary)** and **Yasufuku J930**. **2443Z's** dam, **LMR Ms Yojimbo 0166X**, is also in the sale as Lot #83.

**Yojimbo** was the \$35,000 sale topper in our initial 2008 Production Sale and is now living life in Louisiana at Monarch Farms. Meanwhile, **Yojimbo** as a sire is averaging 29.64% IMF with 12 carcass images analyzed - less than 1% difference between **Yojimbo** and **Shigeshigetani**. We have a strong conviction that **Yojimbo** will be a great dam sire. **One of his progeny, 8155U, was harvested and presented over 40% IMF – see photo.**

**2443Z** is an open heifer and ready to boost your breeding program upon sale date.



8155U YOJIMBO X MICHIFUKU 40.2% IMF

LOT  
58

## LMR MS ITOMICHI 1/2 1292Y

registration no. **FB13112** birthdate **06/20/2011** scd **VA**

sire TF ITOMICHI 1-2 FB2126

ITOMICHI J1158 FB500

DAI 2 KINTOU J337756 FB464

dam LMR MS MICHIFUKU 628S FB6639

MICHIFUKU FB1615

CHR MS HIRASHIGE 055J FB4832

GROUP	TAJIMA	KEDAKA	TOTTORI	ITOZAKURA	SHIMANE	OKAYAMA	HIROSHIMA	OTHER
<b>C</b>	39%	5%	2%	34%	7%	7%	7%	0%

2013 November WAGYU Group BREEDPLAN  
based on 41,500 Wagyu Group herd

EBV	TRAIT	EBV	ACC	EBV percentiles for 1292Y	
+0.8	birth weight (kg)	+2.3	62%	« HEAVIER	HEAVIER »
+9	200-day Wt (kg)	+16	59%		HEAVIER »
+14	400-day Wt (kg)	+23	58%		HEAVIER »
+18	600-day Wt (kg)	+28	57%		HIGHER »
+1	milk (kg)	+5	55%		LARGER »
+0.4	eye muscle area (sq.cm)	+1.5	42%		HIGHER
+0.1	IMF (%)	+0.1	42%		HIGHER
+\$20	fullblood feedlot index	+\$24			HIGHER

Breed Avg. EBVs  
2012 born calves

100 50 0

Born June of 2011, **LMR MS ITOMICHI 1/2 1292Y** has a pedigree worth staring at. With **TF Itomichi 1/2** on her paternal side, and a **Michifuku** and **ETJ001** on her maternal side, this is a breeder's dream of a pedigree. And her EBV is a sight for sore eyes too: huge eye muscle area; small rib and rump fat; strong beef yield; great growth and maturation and outstanding milk production.



9391W TF148 X ITOMICHI 1-2 35.20% IMF



9394W TF148 X ITO-0602 30.14% IMF

**TF Itomichi 1/2** sired **1292Y**. His

legacy: growth and great mothering ability with a penchant for strong marbling. **Note that his Milk EBV ranks in the top 1%** of almost 4,000 bulls analyzed by BREEDPLAN – and the #3 Dam Sire ranking in the 2014 LMR Sire Performance Study averaging 28.96% IMF on 7 carcasses.

**Examples of Itomichi 1-2's ability as a dam sire and sire of dam sire are pictured.**

**1292Y's** dam is **LMR Ms Michifuku 628S** – an outstanding flush cow with a 400-day scan of near-tops 6.48% IMF – who has produced 16 fabulous offspring. Some have sold private treaty. Some were sold into the Lone Mountain Wagyu beef program, resulting in a range of super Prime beef carcasses. Some are outstanding flush cows; each with near-tops IMF scans comparable to their dam.

**1292Y** has one sister by **Kitaguni Jr., 1258Y**, who produced 20 viable embryos in her first and only flush so far. Another sister by **Kitaguni Jr., 1265Y**, produced 12 embryos in her only flush. **1292Y** has not yet been flushed (though she's had one calf) – perhaps she will do even better than her sisters. Another sister, **LMR Sensei 2425Z**, is in the sale as Lot #77.

**1292Y** is exposed to **Yojimbo** and if bred will be due in November. Otherwise, she will be ready to breed or flush – your call.

## LMR MS JIRO 9238W

LOT  
59

registration no. **FB9983** birthdate **04/24/2009** scd -

sire LMR JIRO 711T FB7459  
BAR R SANJIROU 4P FB5663  
BR MS TAKAZAKURA 0652 FB5076

dam BR MS ITOMICHI/0602 4625 FB6249  
BR ITOMICHI 0602 FB5100  
BR MS YASUFUKU 0645 FB5084

GROUP	TAJIMA	KEDAKA	TOTTORI	ITOZAKURA	SHIMANE	OKAYAMA	HIROSHIMA	OTHER
D	70%	2%	1%	9%	2%	7%	3%	5%

2013 November WAGYU Group BREEDPLAN  
based on 41,500 Wagyu Group herd

EBV	TRAIT	EBV	ACC	EBV percentiles for 9238W	
+0.8	birth weight (kg)	-0.5	70%	LIGHTER >	
+9	200-day Wt (kg)	+5	53%	< LIGHTER	
+14	400-day Wt (kg)	+9	52%	LIGHTER <	
+18	600-day Wt (kg)	+10	50%	< LIGHTER	
+1	milk (kg)	-	-		
+0.4	eye muscle area (sq.cm)	-	-		
+0.1	IMF (%)	-	-		
+\$20	fullblood feedlot index	+\$9		< LOWER	

100 50 0

Born April of 2009, **LMR MS JIRO 9238W** is five years old, and sired by **LMR Jiro 711T** (himself sired by LMR herd sire **Bar R Sanjirou 4P**) who was sold after a short stint as a herd sire for LMR in the 2009 LMR Production Sale. **A homegrown sire, he proved himself shortly after his sale with a steer grading VAB80 (9244W) as pictured.**



9244W JIRO 711T X YASUFUKU JR 28% IMF



9240W SANJIROU 4P X ITOMICHI-0602 34.3% IMF

With **Yasufuku Jr.** figuring prominently on the maternal side along with **Itomichi**, **9238W** has a dam worth writing home about: **BR Ms Itomichi/0602 4625**. She is one of Lone Mountain's most productive breeders and a testament is that she is 10 years old and pregnant once again. With 13 calves and 63 viable embryos produced in 8 sessions over a five-year period (a winning streak averaging 8 per flush), **4625** was one of the best investments we've made.

And her daughter **9238W** will be a great investment for one lucky buyer. **As the photo at right depicts, 9238W's brother by Sanjirou 4P scored 34.3% IMF in our beef program.** Two sisters are in the sale: **LMR Kitaguni 2305Z** as Lot #46 and **9276W** by LMR herd sire **Bar R Sanjirou 4P** as Lot #37.

With 70% **Tajima**, you can expect marbling progeny out of **9238W** but you'll find growth as well when bred astutely.

**9238W** is exposed to **Kitaguni Jr.** and due in November if bred. Otherwise she will sell open and ready to flush.

LOT  
60

## LMR MS TAK-3612 735T


 registration no. **FB7767**      birthdate **09/21/2007**      scd **AA**

 sire **BR TAKAZAKURA-0606 3612 FB5972**      **BR TAKAZAKURA 0606 FB5101**  
    **BR MS SANJIROU 0656 FB5091**

 dam **BR MS HARUKI-2 2606 FB5822**      **HARUKI II FB1614**  
    **BR MS FUKUTSURI 9671 FB4950**

GROUP	TAJIMA	KEDAKA	TOTTORI	ITOZAKURA	SHIMANE	OKAYAMA	HIROSHIMA	OTHER
<b>D</b>	78%	6%	3%	1%	0%	5%	2%	5%

 2013 November WAGYU Group BREEDPLAN  
 based on 41,500 Wagyu Group herd

EBV	TRAIT	EBV	ACC	EBV percentiles for 735T	
+0.8	birth weight (kg)	+0.4	77%	» LIGHTER	
+9	200-day Wt (kg)	+9	68%	LIGHTER <	
+14	400-day Wt (kg)	+11	69%	LIGHTER <	
+18	600-day Wt (kg)	+17	64%	LIGHTER <	
+1	milk (kg)	-1	51%	<< LOWER	
+0.4	eye muscle area (sq.cm)	+1.1	41%		LARGER >
+0.1	IMF (%)	-0.3	43%	<< LOWER	
+\$20	fullblood feedlot index	+\$2		<< LOWER	

 BREED Avg. EBVs  
 2012 born calves

100      50      0

Lone Mountain's breeding program has been living off of the fruits of this fantastic animal's only flush. Born September of 2007 and thus entering the prime of her fertility, **LMR MS TAK-3612 735T** was flushed once to **ETJ001 Hirashigetayasu** and produced 13 viable embryos in that one flush in June 2010.

**735T's** daughter by **Kenichi 807T, 2414Z**, is in the sale as Lot #52; her daughter by **Toshiro, 0118X**, is in the sale as Lot #31; and granddaughter by **Yasufuku Jr, 2427Z** is also in the sale as Lot #16.

Sired by a notable **Takazakura** grandson, **735T** has two storied foundation sires on her maternal side: **Haruki II** and **JVP Fukutsuru 068**. **Takazakura's** grandsire is **Yasufuku J930**, thought by Kenichi Ono to be the epitome of Wagyu – he famously said, "There is only one **Yasufuku**" – and lists him as the first sire he discusses in Volume 1 of his series *The Outstanding Wagyu of Japan* (sometimes translated as *The 100 Greatest Wagyu of Japan*).

**735T's** paternal grand-dam is **Ms Sanjiro 0656**, the dam of **0191X** (in the sale as Lot #56). **735T's** maternal grand-dam is **Ms Fukutsuru 9671** who produced 8 impressive progeny before we sold her in the 2009 LMR Production Sale, including **LMR Ms Michifuku 783T** who is in the sale today as Lot #32.

This 78% **Tajima** breeding female will be a great addition to your herd regardless of your aims. **735T** is exposed to **WW Hirashigetayasu Z278** and due in November if bred. **She has tested Homozygous AA for the SCD gene.**

**LOT  
61**



birthdate 11/19/2011

scd AA

ITOHIRASHIGE FB680  
DAI 6 OE FUJII FB679

BAR R FUKUTSURU 36H FB4235  
BAR R 3P FB5703

MICHIFUKU x 1433Y								
GROUP	TAJIMA	KEDAKA	TOTTORI	ITOZAKURA	SHIMANE	OKAYAMA	HIROSHIMA	OTHER
D	68%	11%	8%	6%	0%	4%	1%	1%

based on 41,500 Wagyu Group herd

EBV	TRAIT	EBV	ACC	EBV percentiles for 1433Y	
+0.8	birth weight (kg)	+3.1	76%	« HEAVIER	
+9	200-day Wt (kg)	+16	68%		HEAVIER »
+14	400-day Wt (kg)	+27	69%		HEAVIER »
+18	600-day Wt (kg)	+35	65%		HEAVIER »
+1	milk (kg)	+7	55%		HIGHER »
+0.4	eye muscle area (sq.cm)	+3.9	52%		LARGER »
+0.1	IMF (%)	-0.6	53%	« LOWER	
+\$20	fullblood feedlot index	+\$27			HIGHER »

**1433Y** has tested Homozygous AA for the SCD gene.

## A black and white photograph of a young black cow standing in a field. The cow has a white marking on its hindquarters and a yellow tag on its ear. A shadow is cast on the ground in front of it.

sire **CHR KITAGUNI 07K FB5140** | **KITAGUNI JR FB2422**  
**CHR MS MICHIFUKU 030H FB4240**

dam HR MS KIKUHANA FB7643

GROUP	TAJIMA	KEDAKA	TOTTORI	ITOZAKURA	SHIMANE	OKAYAMA	HIROSHIMA	OTHER
C	47%	9%	1%	32%	5%	3%	1%	0%

EBV	TRAIT	EBV	ACC	EBV percentiles for 0174X	
+0.8	birth weight (kg)	+0.2	44%	« LIGHTER	» LIGHTER
+9	200-day Wt (kg)	+2	40%	« LIGHTER	
+14	400-day Wt (kg)	+2	38%	« LIGHTER	
+18	600-day Wt (kg)	+2	38%	« LIGHTER	
+1	milk (kg)	-1	39%	« LOWER	
+0.4	eye muscle area (sq.cm)	-	-		
+0.1	IMF (%)	-	-		
+\$20	fullblood feedlot index	+\$4		« LOWER	

**0174X** is exposed by AI to the magnificent **Michifuku** and if bred will be due in November. She has already had one beautiful heifer by **Yasufuku Jr** for us as well – another addition to our breeding herd.



0172X KITAGUNI 07K X KIKUHANA 022G 29.74% IMF

## LMR MS SHIGESHIGETANI 2301Z

LOT  
63

registration no. **FB13697** birthdate **03/02/2012** scd **VA**

sire **SHIGESHIGETANI FB2907**  
**HARUKI II FB1614**  
**SUZUTANI FB1617**

dam **LMR MS KITAGUNI JR 9375W**  
**FB10928**  
**KITAGUNI JR FB2422**  
**BR MS MICHII-8614 2653 FB5826**

GROUP	TAJIMA	KEDAKA	TOTTORI	ITOZAKURA	SHIMANE	OKAYAMA	HIROSHIMA	OTHER
<b>D</b>	63%	12%	1%	6%	3%	5%	4%	5%

2013 November WAGYU Group BREEDPLAN  
 based on 41,500 Wagyu Group herd

EBV	TRAIT	EBV	ACC	EBV percentiles for 2301Z	
+0.8	birth weight (kg)	-1.1	53%	LIGNER »	
+9	200-day Wt (kg)	+3	51%	« LIGNER	
+14	400-day Wt (kg)	-1	51%	« LIGNER	
+18	600-day Wt (kg)	0	48%	« LIGNER	
+1	milk (kg)	-	-		
+0.4	eye muscle area (sq.cm)	-1.3	35%	« SMALLER	
+0.1	IMF (%)	+0.5	36%		HIGHER »
+\$20	fullblood feedlot index	+\$15		LOWER «	

100 50 0

When we say, "the apple doesn't fall far from the tree", you can bet we're talking about a **Shigeshigetani** link for its great heritability of fine qualities. **LMR MS SHIGESHIGETANI 2301Z** exemplifies this. Born March of 2012, **2301Z** hails from dam **LMR Ms Kitaguni Jr 9375W** who scored in the top 1% in IMF measurement by ultrasound scan at 400 days with an astounding 6.98%. You can bet her daughter will produce astounding calves as well.

Remember that **Shigeshigetani** descends from **Shigeshigenami**, dubbed by Prof. Kenichi Ono as the bull most representative of "meat-quality Wagyu", with a high degree of marbling and a great likelihood of good characteristics being passed down to progeny. With **Kitaguni Jr.** on her maternal side – **Kitaguni 7 No 8** ranks as Ono's overall #3 greatest Wagyu in all of Japan – this composite of two outstanding marbling Wagyu will bring your herd well above prime, literally.

**Shigeshigetani's** seven imaged progeny averaged 30.57% IMF, while **Kitaguni Jr.** is ranked as the **#1 IMF% Sire** in the 2014 LMR Sire Performance Study, averaging 35.31%. With these bloodlines, one simply cannot go wrong. See examples pictured of **Shigeshigetani-sired ribeyes**.

**2301Z** has been AI'd to **Takazakura**, and if pregnant will calve in November.



8183U SHIGESHIGETANI X MICHIFUKU 43.1% IMF



9225W SHIGESHIGETANI X MICHIFUKU 34.0% IMF