

LOT  
64

## LMR MS HARUKI 1296Y


 registration no. **FB12802**      birthdate **09/11/2011**      scd **VA**

 sire **HARUKI II FB1614**      **MONJIRO 11550 FB201**  
    **SAKURA 2 J741638 FB206**

 dam **LMR MS KITAGUNI 9205W FB9517**      **KITAGUNI JR FB2422**  
    **BR MS YASUFUKU 0609 FB5082**

GROUP	TAJIMA	KEDAKA	TOTTORI	ITOZAKURA	SHIMANE	OKAYAMA	HIROSHIMA	OTHER
<b>C</b>	46%	20%	1%	12%	6%	0%	6%	8%

 2013 November WAGYU Group BREEDPLAN  
 based on 41,500 Wagyu Group herd

EBV	TRAIT	EBV	ACC	EBV percentiles for 1296Y	
+0.8	birth weight (kg)	-0.5	61%	LIGHTER »	
+9	200-day Wt (kg)	+5	59%	« LIGHTER	
+14	400-day Wt (kg)	+8	59%	« LIGHTER	
+18	600-day Wt (kg)	+11	57%	« LIGHTER	
+1	milk (kg)	-2	52%	« LOWER	
+0.4	eye muscle area (sq.cm)	+0.4	45%		» LARGER
+0.1	IMF (%)	+0.6	45%		HIGHER »
+\$20	fullblood feedlot index	+\$34			HIGHER »

 BREED Avg. EBVs  
 2012 born calves

100      50      0

Hold onto your hats, folks! Here's the herd-improving **Haruki II** female you've been looking for. Born September of 2011, **LMR MS HARUKI 1296Y** is a dream pedigree, with popular **Haruki II** dominating the paternal side, and **Kitaguni Jr.** and **Yasufuku Jr.** on the maternal side. These three foundation sires are an epic combination in an animal, adding up to a 46% **Tajima**, 20% **Kedaka**, 12% **Itozakura** powerhouse.

Remember that **Haruki II** is that **Monjiro** son espoused with a fantastic growth streak, which explains the top 10% Fullblood Feedlot Index (+\$ 34) of **1296Y**. The maternal side of **1296Y** contains the powerful marbling nick (**Kitaguni x Yasufuku**) we've followed since visiting Japan in 2007 for the 9th Zenkyo in Tottori, and that's bringing high premiums to our beef program. **See an example of the intense marbling that the "nick" can produce pictured at right.**

**Kitaguni** is ranked as the **#1 IMF Sire** in the 2014 LMR Sire Performance Study (SPS) with an average of 35.31% with 9 actual carcass results – and **Yasufuku Jr** is #2 (average 33.10% - 9 carcasses). In addition, **Yasufuku Jr** is listed as **#1 Dam Sire**, based on 13 images, with an average 35.04% IMF and #2 Sire for Ribeye Area. With this **Kitaguni x Yasufuku** dam, it is reasonable to expect wonderful daily gain and meat quality in her progeny.

**1296Y**, having delivered a **Shigesigetani** bull calf in March, is open, and ready to breed or flush at time of sale.



8167U KITAGUNI JR X YASUFUKU JR 39.1% IMF

## LMR MS AKAHIGE 1454Y

LOT  
65
 registration no. **FB13485**      birthdate **12/10/2011**      scd **AA**

 sire LMR AKAHIGE 8119U FB8329      ITOZURUDOI TF151 FB3685  
    TF 600 FB6000

 dam LMR MS MICHIFUKU 9231W FB9817      MICHIFUKU FB1615  
    LMR MS FUKUTSURU 609S FB6427

GROUP	TAJIMA	KEDAKA	TOTTORI	ITAZAKURA	SHIMANE	OKAYAMA	HIROSHIMA	OTHER
D	63%	7%	0%	22%	3%	2%	2%	0%

## SANJIROU x 1454Y

GROUP	TAJIMA	KEDAKA	TOTTORI	ITAZAKURA	SHIMANE	OKAYAMA	HIROSHIMA	OTHER
D	82%	4%	0%	11%	1%	1%	1%	0%

Born in December 2011, **LMR MS AKAHIGE 1454Y** is an offspring of one of our up-and-coming favorite sires – son of **Itozurudo TF151**, **LMR Akahige 8119U** – who has been making waves in the Lone Mountain Wagyu beef program with outstanding actual growth numbers that are not proven out by middling EBV scores, all the while scoring surprisingly high marbling with his progeny. **See an example of his work pictured.**

And with the preeminent foundation sires **Michifuku** and **JVP Fukutsuru 068** on her maternal side adding even more marbling propensity into the proverbial mix, **1454Y** has the makings of a marbling breeder for your herd. In fact, the dam of **1454Y** is **LMR Ms Michifuku 9231W** who scores in the top 10% for IMF EBV and an unquestionably outstanding IMF ultrasound scan measuring 7.57% at 400 days.

As this is being written, **9231W** delivered healthy and happy twin heifers – a first for Lone Mountain Wagyu – by our young **Yasufuku Jr** sire, **LMR Masahiko1250Y**.

**1454Y** is pregnant to **Sanjirou** and due with her first calf in June. She'll be raring to be bred again by fall. **1454Y** was covered by our two **Kitaguni Jr** sons, **1409Y** and **1441Y**, but we are quite certain she is carrying a **Sanjirou** calf. **She tested Homozygous AA for the SCD gene.**

 2013 November WAGYU Group BREEDPLAN  
 based on 41,500 Wagyu Group herd

EBV	TRAIT	EBV	ACC	EBV percentiles for 1454Y	
+0.8	birth weight (kg)	+1.1	73%	HEAVIER <<	>> HEAVIER
+9	200-day Wt (kg)	+10	58%	LIGHTER <<	>> HEAVIER
+14	400-day Wt (kg)	+11	57%	LIGHTER <<	>> HEAVIER
+18	600-day Wt (kg)	+15	55%	LIGHTER <<	>> HEAVIER
+1	milk (kg)	-	-	SMALLER <<	>> HIGHER
+0.4	eye muscle area (sq.cm)	-0.1	36%	SMALLER <<	>> HIGHER
+0.1	IMF (%)	+0.1	36%	SMALLER <<	>> HIGHER
+\$20	fullblood feedlot index	+\$11		<< LOWER	



0207X AKAHIGE 8119U X SANJIROU 33.90% IMF



LOT  
66

## LMR MS KITAGUNI 2328Z

registration no. **FB13689** birthdate **03/20/2012** scd **VA**sire KITAGUNI JR FB2422  
KITAGUNI 7 NO 8 J1530 FB581  
NAKAYUKI J13943 FB2893dam BR MS SANJIROU 0630 FB5092  
SANJIROU FB2501  
METANI FB3125

GROUP	TAJIMA	KEDAKA	TOTTORI	ITOZAKURA	SHIMANE	OKAYAMA	HIROSHIMA	OTHER
C	58%	8%	0%	12%	6%	9%	2%	4%

2013 November WAGYU Group BREEDPLAN  
based on 41,500 Wagyu Group herd

EBV	TRAIT	EBV	ACC	EBV percentiles for 2328Z	
+0.8	birth weight (kg)	-0.8	70%	LIGHTER »	
+9	200-day Wt (kg)	-2	63%	« LIGHTER	
+14	400-day Wt (kg)	-4	61%	« LIGHTER	
+18	600-day Wt (kg)	-8	59%	« LIGHTER	
+1	milk (kg)	-5	50%	« LOWER	
+0.4	eye muscle area (sq.cm)	-1.4	42%	« SMALLER	
+0.1	IMF (%)	+0.5	43%		HIGHER »
+\$20	fullblood feedlot index	+\$5		« LOWER	

Breed Avg. EBVs  
2012 born calves

100 50 0

Born in March of 2012, **LMR MS KITAGUNI 2328Z** has one of those special trifecta foundation sire pedigrees that makes a breeder's hair stand on end. With **Kitaguni Jr.** on the paternal side, and **Sanjirou** and **Takazakura** on the maternal side, **2328Z** has fame and fortune in her (and in the winning bidder's) future. While marbling is nearly guaranteed – and one of **2328Z's** brothers marbled out at 33% IMF in our beef program – keep in mind that **Takazakura** is regarded as a marbling sire, but also passes on fantastic growth traits in addition.

**Kitaguni Jr. is not only #1 for IMF** in the 2014 SPS (averaging 35.31% IMF with 9 carcasses imaged) but shows an average AB50 USDA Grade over 13 LMW steer carcasses. We would not be surprised to see **Kitaguni Jr** jumping to the top of the Dam Sire listing as Lone Mountain results are just beginning to filter in. **At right see a sample of a Kitaguni-Sanjirou cross ribeye.**

**2328Z's** dam is **BR Ms Sanjirou 0630** who is an outstanding cow and one of our very best donors. With 81 viable embryos in her last 4 flushes, she is 14 and held open for the winner of her Flush in this sale as Lot #10. **0630** brings a legacy of fertility and productivity that is nearly unrivaled in our breeding program. One of **2328Z's** sisters by **Hirashigetayasu Z278 (0202X)** is in the sale as Lot #5. **A picture of the ribeye of one 0630's steers, LMR Yojimbo 8185U, is shown at right.**

**2328Z** has been AI'd to **LMR Yojimbo 634S** and if bred will be due in November.



8157U KITAGUNI X SANJIROU 34.2% IMF



8185U YOJIMBO X SANJIROU 33.0% IMF

## LMR MS YOJIMBO 9268W

LOT  
67
 registration no. **FB10090** birthdate **07/14/2009** scd **AA**

sire LMR YOJIMBO 634S FB6761 | BAR R FUKUTSURU 36H FB4235  
BR MS YASUFUKU 0609 FB5082

dam LMR RINKO 708T FB7456 | SANJIROU FB2501  
BR MS TAKAZAKURA 0652 FB5076

GROUP	TAJIMA	KEDAKA	TOTTORI	ITOZAKURA	SHIMANE	OKAYAMA	HIROSHIMA	OTHER
D	79%	2%	1%	2%	0%	6%	3%	7%

 2013 November WAGYU Group BREEDPLAN  
based on 41,500 Wagyu Group herd

EBV	TRAIT	EBV	ACC	EBV percentiles for 9268W	
+0.8	birth weight (kg)	+0.7	77%	» LIGHTER	
+9	200-day Wt (kg)	+4	68%	« LIGHTER	
+14	400-day Wt (kg)	+6	65%	« LIGHTER	
+18	600-day Wt (kg)	+8	62%	« LIGHTER	
+1	milk (kg)	-8	48%	« LOWER	
+0.4	eye muscle area (sq.cm)	-0.1	36%	SMALLER «	
+0.1	IMF (%)	+0.2	38%	» HIGHER	
+\$20	fullblood feedlot index	+\$7		« LOWER	

 BREED Avg. EBVs  
2012 born calves

100 50 0

Born July of 2009, **LMR MS YOJIMBO 9268W** is a superior breeding female in her prime. At 79% **Tajima**, **9268W** is a perfect fit for those breeding to 'beyond prime' beef supply. In her powerful pedigree lies a trio of historic foundation sires: **Yojimbo** on her paternal side, and **Sanjiro**/**Takazakura** on her maternal side. With that combination, expect the best possible meat quality this breed has to offer, as well as a significant boost in gain and meat yield.

We can only speculate at this juncture about **Yojimbo's** future as Dam Sire, but if look no further than his initial results in the Lone Mountain Sire Performance Study, it seems quite promising: average 29.64% IMF with 12 carcass images analyzed - **less than 1% difference between Yojimbo and Shigesigetani!** And the average USDA grade is AB50! **There is great potential here – see evidence of his work as a sire pictured at right.**

**9268W's** dam should be familiar by now: the excellent **LMR Rinko 708T**, whose reputation precedes her. One of **9268W's** sisters by this dam is **1428Y**, also in the sale as Lot #6. **9268W's** full brother, **LMR Yojimbo 9262W**, was USDA graded AB60 and the ribeye is pictured at right.

And the legacy of greatness this family brings will continue with **9268W's** daughter by **Haruki II, 1442Y**, who is also in the sale as Lot #81.

**9268W** is exposed to **WW Hirashigetayasu Z278** and is due in November. **She also tested Homozygous AA for the SCD gene.**



9274W YOJIMBO X MICHIFUKU\_38.70% IMF



9262W YOJIMBO X SANJIROU 27.80% IMF



## A black cow stands in a field with mountains in the background. The cow has a yellow tag on its ear and the letters 'LM' marked on its side. The image is watermarked with 'Bromary ©' in the bottom right corner.

GROUP	TAJIMA	KEDAKA	TOTTORI	ITOZAKURA	SHIMANE	OKAYAMA	HIROSHIMA	OTHER
D	71%	8%	4%	3%	0%	7%	2%	5%

– 2013 November WAGYU Group BREEDPLAN  
based on 41,500 Wagyu Group herd

Breed Avg. EBVs 2012 born calves		EBV	TRAIT	EBV	ACC	EBV percentiles for 823T	
		+0.8	birth weight (kg)	+1.5	69%	◀ HEAVIER	
		+9	200-day Wt (kg)	+8	63%	LIGHTER ◀	
		+14	400-day Wt (kg)	+7	61%	◀ LIGHTER	
		+18	600-day Wt (kg)	+10	59%	◀ LIGHTER	
		+1	milk (kg)	-1	59%	◀ LOWER	
		+0.4	eye muscle area (sq.cm)	-2.1	38%	◀ SMALLER	
		+0.1	IMF (%)	+0.3	39%	HIGHER ▶	
		+\$20	fullblood feedlot index	+\$8		◀ LOWER	

100                      50                      0

**823T** is open and ready for service, having produced a **TF148** bull calf in December. She has never been flushed – but she has had a calf each year: 2009, 2010, 2011, 2012 and in 2013.

**LOT  
69**



birthdate 10/09/2007

scd VA

TAKAZAKURA FB2892

JVP MS FUKUSHIGE T10E FB3090

MICHIFUKU FB1615

BR MS MICHIFUKU T4E FB4473

GROUP	TAJIMA	KEDAKA	TOTTORI	ITOZAKURA	SHIMANE	OKAYAMA	HIROSHIMA	OTHER
D	68%	8%	4%	0%	0%	7%	3%	10%

FUKUTSURU 068 x 759T								
GROUP	TAJIMA	KEDAKA	TOTTORI	ITOZAKURA	SHIMANE	OKAYAMA	HIROSHIMA	OTHER
D	84%	4%	2%	0%	0%	4%	2%	5%

2013 November WAGYU Group BREEDPLAN  
based on 41,500 Wagyu Group herd

EBV	TRAIT	EBV	ACC	EBV percentiles for 759T	
+0.8	birth weight (kg)	+0.2	75%	» LIGHTER	
+9	200-day Wt (kg)	+5	65%	« LIGHTER	
+14	400-day Wt (kg)	+12	65%	LIGHTER «	
+18	600-day Wt (kg)	+11	61%	« LIGHTER	
+1	milk (kg)	-9	51%	« LOWER	
+0.4	eye muscle area (sq.cm)	-1.2	42%	« SMALLER	
+0.1	IMF (%)	+0.4	44%		HIGHER »
+\$20	fullblood feedlot index	+\$17		LOWER «	

**759T's** sire, **Bar R Tak 1K**, has the highest Marbling EPD of any **FREE** bull in **Jerry Reeves' bull battery**, tied with the highly regarded **30T**. **759T's** dam, **BR Ms Michifuku 0638**, is another of the initial female purchases from Gerry Pittenger back in 2005. 0638 produced 8 calves for Lone Mountain before being sold in 2008 at our initial Production Sale.

**759T** is versatile as it matches good growth as well. Don't hesitate on this one: **759T's** sister sold for \$19,500. This is one to watch.

**759T** is pregnant to **JVP Fukutsuru 068** and due in August, and ready to continue adding value to your herd by year's end.



## A black cow stands in a field, facing left. It has a green tag on its ear. The background shows a line of trees and mountains under a clear sky. A watermark "Brammy ©" is visible in the lower right corner of the image.

sire BR ITOMICHI/0602 4632 FB6521

dam BAR R 5P FB5704	SANJIROU FB2501
	MISS BAR R 321H FB4209

GROUP	TAJIMA	KEDAKA	TOTTORI	ITOZAKURA	SHIMANE	OKAYAMA	HIROSHIMA	OTHER
D	78%	4%	2%	9%	2%	4%	2%	1%

BRED Avg. EBVs 2012 born calves		EBV	TRAIT	EBV	ACC	EBV percentiles for 806T	
		+0.8	birth weight (kg)	-0.3	77%		LIGHTER »
		+9	200-day Wt (kg)	+9	67%	LIGHTER «	
		+14	400-day Wt (kg)	+13	64%	LIGHTER «	
		+18	600-day Wt (kg)	+15	61%	LIGHTER «	
		+1	milk (kg)	-1	46%	« LOWER	
		+0.4	eye muscle area (sq.cm)	-0.1	35%	« SMALLER	
		+0.1	IMF (%)	+0.2	36%		» HIGHER
		+\$20	fullblood feedlot index	+\$18		LOWER «	

We had a suspicion that **806T** was going to produce well. Her dam, linebred to **Monjiro**, is **Bar R 5P** - two of her steers exhibited compelling marbling (before our carcass camera was up and running). **5P** was one of LMR's original females, bought from one of our mentors from Washington State, Jerry Reeves, in 2005. **And 806T's full sister 803T produced an amazing TF148 steer (0181X), pictured above.**

Another sister of **806T** is another of our very best breeding cows, **BR Ms Yasufuku 0645, who produced the 50.20% carcass pictured at right. 8113U** by **Bar R Tak 12P**, another daughter of **5P**, and a sister of **806T**, is in the sale as Lot #20.

Now in her prime, **806T** has been AI exposed to **ETJ 001** and due in November, if bred. **She tested Homozygous AA for the SCD gene.**

**LOT  
71**



birthdate 10/20/2007

scd **VA**

HIRASHIGETAYASU ETJ001 FB670  
JJ31H FB4231

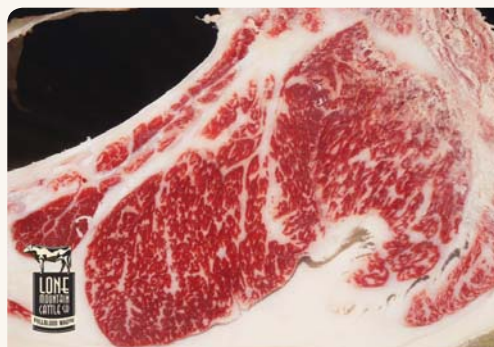
WSU SHINBEI 1805H FB4297  
BR MS KIKUHANA 8621 FB4482

GROUP	TAJIMA	KEDAKA	TOTTORI	ITOZAKURA	SHIMANE	OKAYAMA	HIROSHIMA	OTHER
C	58%	12%	4%	14%	1%	10%	0%	1%

2013 November WAGYU Group BREEDPLAN  
based on 41,500 Wagyu Group herd

Breed Avg. EBVs 2012 born calves		EBV	ACC	EBV percentiles for 775T	
+0.8	birth weight (kg)	+2.1	76%	« HEAVIER	HEAVIER »
+9	200-day Wt (kg)	+14	64%		» HEAVIER
+14	400-day Wt (kg)	+16	67%		» HEAVIER
+18	600-day Wt (kg)	+20	62%		
+1	milk (kg)	0	46%	« LOWER	
+0.4	eye muscle area (sq.cm)	-0.5	43%	« SMALLER	
+0.1	IMF (%)	0.0	46%	LOWER «	
+\$20	fullblood feedlot index	+\$10		« LOWER	

Her grandsire, **ETJ001**, ranks in the top 1% for **Carcass Weight, 600 Day-Weight, Mature-Weight, REA and Milk BREEDPLAN EBVs** based on almost 4,000 FB Wagyu bulls – talk about Growth! Those traits were assuredly inherited by his son.



9274W YOJIMBO X MICHIFUKU 38.70% IMF



8183U SHIGESHIGETANI X MICHIFUKU 43.1% IMF

But, make sure to pay attention to the dam: **BR Ms WSU Shinbei-1805H 0641**, bred and raised in Washington State by Gerry Pittenger with able assistance of Dr. Charley Gaskins and Dr. Jerry Reeves. She produced a commendable 23 embryos in only 4 flushes. But more enticing, she produced steer calves that have brought fantastic premiums and recognition to the Lone Mountain beef program.

Multiple progeny of **0641** showed up above 25% IMF, with a steer by **Yojimbo (9274W)** scoring a fantastic **38.7%**, and another by **Shigesigetani (8183U)** netting an awe-inspiring **43.1%**. See the images pictured. These are all brothers of **775T**, who herself produced a steer that measured 32.4% IMF in the beef program.

**775T** delivered a **LMR Masahiko 1250Y** (our young and brilliant **Yasufuku Jr** herd sire) heifer calf in March, is open, and ready to breed or flush at time of sale.



LOT  
72

## LMR MS SHIGE II 3463A



registration no. **FB16400**      birthdate **06/13/2013**      scd **AA**

sire LMR SHIGE II FB13685

SHIGESHIGETANI FB2907  
LMR MS SANJIROU 713T FB7460

dam LMR MS KENICHI 0156X FB11211

LMR KENICHI 807T FB8608  
LMR MS ITOZURUDOI 815T FB11177

GROUP	TAJIMA	KEDAKA	TOTTORI	ITOZAKURA	SHIMANE	OKAYAMA	HIROSHIMA	OTHER
C	64%	7%	0%	15%	4%	3%	3%	5%



LMR SHIGE II 1206Y, SIRE OF 3463A

**LMR MS SHIGE II 3463A** is the third and most recent offspring of Lone Mountain's **Shigeshigetani** herd sire - **LMR Shige II 1206Y**. Our **Shige II** herd sire is a **Shigeshigetani** X **Sanjirou/Takazakura** phenomenon that met our strict criteria for selection into our battery of herd bulls. We're confident he and his progeny will bring dividends. **A ribeye from 1206Y's sire, Shigeshigetani, is pictured at right** – a sign most certainly of things to come from Shige II.

**3463A** also brings the legacy of one of our most promising herd sires, a **Michifuku** lineage **LMR Kenichi 807T** as her dam sire. She also brings with her the rare and unrivaled **Itozurudo** **TF151** on her maternal side. Remember that **TF151** is the much-loved grandson of **Dai 7 Itozakura** who was one of Takeda's top-notch offerings. There is no more semen available from the "beyond comparison" **TF151**. You'll find the best characteristics of **TF151** descend through the generations, in particular to this virgin heifer calf.

**3463A's** pedigree reads like a Wagyu breeder's dream, with a double instance of **Suzutani**, one of the most highly regarded Wagyu females in the US – and **Michifuku, Sanjirou, Takazakura, Itozurudo** **TF151, Itoshigenami TF148, Shigeshigetani, Haruki II** - a veritable listing of the most influential Fullblood Wagyu outside Japan.

**3463A** is a virgin heifer born in June of 2013. **She tested Homozygous AA for the SCD gene.**



8183U SHIGESHIGETANI X MICHIFUKU 43.1% IMF

**LOT  
73**



birthdate 03/20/2013

scd AA

KITAGUNI 7 NO 8 J1530 FB581  
NAKAYUKI J13943 FB2893

SANJIROU FB2501  
CHR MS FUKUTSURU 107L FB5861

GROUP	TAJIMA	KEDAKA	TOTTORI	ITOZAKURA	SHIMANE	OKAYAMA	HIROSHIMA	OTHER
D	61%	7%	0%	15%	6%	8%	1%	2%

based on 41,500 Wagyu Group herd

Breed Avg. EBVs 2012 born calves		EBV	ACC	EBV percentiles for 3419A	
+0.8	birth weight (kg)	-1.4	60%		LIGHTER »
+9	200-day Wt (kg)	-3	57%	« LIGHTER	
+14	400-day Wt (kg)	-5	56%	« LIGHTER	
+18	600-day Wt (kg)	-15	55%	« LIGHTER	
+1	milk (kg)	-	-		
+0.4	eye muscle area (sq.cm)	-2.0	42%	« SMALLER	
+0.1	IMF (%)	-	-		
+\$20	fullblood feedlot index	-			

1248Y KITAGUNI JR X ITOHANA 2 44.53% IMF



9344W YASUFUKU JR X SANJIROU 37.1% IMF

**3419A's** brother by Yasufuku Jr was 9344W, harvested in the Lone Mountain Fullblood Wagyu beef program, assigned a scale-topping VAB100 USDA marbling grade. See 9344's ribeye pictured above.

In a few short months **3419A** will be ready to flush or breed. **She has tested Homozygous AA for the SCD gene.**



LOT  
74

## LMR MS KENICHI 3401A

registration no. **FB15694** birthdate **02/11/2013** scd **VA**sire LMR KENICHI 807T FB8608  
MICHIFUKU FB1615  
NAKAZAKURA FB2425dam LMR MS HIRASHIGETAYASU Z278  
9312W FB10731  
WW HIRASHIGETAYASU Z278 FB8376  
BR MS YASUFUKU JR 1602 FB5811

GROUP	TAJIMA	KEDAKA	TOTTORI	ITAZAKURA	SHIMANE	OKAYAMA	HIROSHIMA	OTHER
C	57%	7%	4%	14%	5%	5%	1%	6%

2013 November WAGYU Group BREEDPLAN  
based on 41,500 Wagyu Group herd

EBV	TRAIT	EBV	ACC	EBV percentiles for 3401A	
+0.8	birth weight (kg)	+2.4	55%	<< HEAVIER	
+9	200-day Wt (kg)	-	-		
+14	400-day Wt (kg)	-	-		
+18	600-day Wt (kg)	-	-		
+1	milk (kg)	-	-		
+0.4	eye muscle area (sq.cm)	-	-		
+0.1	IMF (%)	-	-		
+20	fullblood feedlot index	-	-		

BRED Avg. EBVs  
2012 born calves

100 50 0

Sired by our own **Michifuku** herd sire, **LMR Kenichi 807T**, **LMR MS KENICHI 3401A** is already proving out that legacy for wonderful marbling with her 5.7% IMF 400-day ultrasound scan. **Kenichi 807T** ranks in the top 5% for REA EBV, and in the top 1% for both Rib Fat and Rump Fat EBVs. As a matter of fact, **Kenichi 807T's** sister, **767T**, produced the steer by **Yasufuku Jr** pictured at right.

With the addition of the **Yasufuku Jr.** foundation sire on her maternal side, there is extreme likelihood that this breeding female will deliver outstanding carcass steers as her progeny. **Yasufuku Jr is the #1 Dam Sire** and the #2 sire for IMF% and REA in the just released 2014 LMR Sire Performance Study.

**3401A's** dam is **LMR Ms Hirashigetayasu Z278 9312W**, an outstanding mother with top-notch markers for marbling (a wow-worthy 6.84% IMF on 400-day ultrasound scan and a strong +\$26 on BREEDPLAN's Fullblood Feedlot Index). **9312W's** brother by **TF147 (8169U)** returned a masterful **AB90 ribeye** (pictured), also demonstrating the power of **Yasufuku Jr** as a dam sire. Expect fantastic growth and milk production as well as marbling from this maternal line.

**LMR MS KENICHI 3401A** was born in February of 2013.



1257Y YASUFUKU JR X SANJIROU 39.84% IMF



8169U ITOSHIGEFUJI TF147 X YASUFUKU JR 44.0% IMF

## LMR MS KENICHI 3432A

LOT  
75
 registration no. **FB15699**      birthdate **04/03/2013**      scd **AA**

 sire LMR KENICHI 807T FB8608      MICHIFUKU FB1615  
    NAKAZAKURA FB2425

 dam LMR MS ITOSHIGEFUJI 9200W FB9527      ITOSHIGEFUJI TF147 FB3681  
    BR MS MICH-8614 2660 FB5830

GROUP	TAJIMA	KEDAKA	TOTTORI	ITOZAKURA	SHIMANE	OKAYAMA	HIROSHIMA	OTHER
<b>C</b>	42%	3%	2%	32%	5%	9%	2%	5%

 2013 November WAGYU Group BREEDPLAN  
 based on 41,500 Wagyu Group herd

EBV	TRAIT	EBV	ACC	EBV percentiles for 3432A	
+0.8	birth weight (kg)	+1.0	57%	HEAVIER <<	
+9	200-day Wt (kg)	+11	51%		>> HEAVIER
+14	400-day Wt (kg)	+14	52%		>> HEAVIER
+18	600-day Wt (kg)	+17	49%		
+1	milk (kg)	-	-	LIGHTER <<	
+0.4	eye muscle area (sq.cm)	-	-		
+0.1	IMF (%)	-	-		
+\$20	fullblood feedlot index	-	-		

100      50      0

**LMR MS KENICHI 3432A** is a virgin heifer with two outstanding foundation sires present in her pedigree. Born in April of 2013, **3432A** brings a match-made-in-heaven marriage of **Michifuku** and **Itoshigefuji TF147**. Remember that **Michifuku** is one of the best marbling foundation sires outside Japan.

And **Itoshigefuji TF147** is one of the most ideal progeny of **Dai 7 Itozakura** and known for being outlandishly big in size as proven out by his position as #2 Carcass Weight Sire in the 2014 LMR SPS, based on 8 carcasses averaging 971 lbs. In addition **TF147** sired **8169U**, whose carcass weighed 1046 lbs and presented an amazing 44.00% IMF! See the ribeye pictured. Add to that that he's known to be a fantastic sire of Fullblood females... and you see that this pedigree is the full package!

Further proof of the marbling ability of **TF147** is the fact that **3432A's** dam, LMR Ms Itoshigefuji 9200W, scanned an impressive 6.50% IMF at 400 days. At the time this catalog is being printed **3432A** was too young to be scanned – but we are confident that the scan will prove out this prepotency.

Sired by our own **Michifuku** herd sire **LMR Kenichi 807T**, **3432A** is a virtual split of 42% **Tajima** and 32% **Itozakura** - this balance is a great asset to astute breeders.

In addition, this heifer tested Homozygous AA for the SCD gene.



8169U ITOSHIGEFUJI TF147 X YASUFUKU JR 44.0% IMF



**LMR MS YOSHIRO 0175X**



registration no. **FB11185**      birthdate **04/24/2010**      scd **AA**

sire LMR YOSHIRO (716T) FB7525

dam BR MS KITATERU-9680 2611 FB5824

GROUP	TAJIMA	KEDAKA	TOTTORI	ITOZAKURA	SHIMANE	OKAYAMA	HIROSHIMA	OTHER
D	85%	3%	1%	2%	0%	8%	0%	1%

2013 November WAGYU Group BREEDPLAN  
based on 41,500 Wagyu Group herd

EBV	TRAIT	EBV	ACC	EBV percentiles for 0175X	
+0.8	birth weight (kg)	-0.5	61%	LIGHTER »	
+9	200-day Wt (kg)	+1	62%	« LIGHTER	
+14	400-day Wt (kg)	+1	62%	« LIGHTER	
+18	600-day Wt (kg)	+1	56%	« LIGHTER	
+1	milk (kg)	+1	44%	LOWER «	
+0.4	eye muscle area (sq.cm)	-0.9	38%	« SMALLER	
+0.1	IMF (%)	+0.3	40%		HIGHER »
+\$20	fullblood feedlot index	+\$7		« LOWER	

Born April of 2010, **LMR MS YOSHIRO 0175X** is an 85% **Tajima** beaut. She was sired by our a former herd bull **LMR Yoshiro 716T** (we sold him to lucky Greg Mullen @ Artisan Cattle in 2009), and her pedigree includes **ETJ003** and the incomparable **JVP Fukutsuru 068** on her maternal side.



9339W YASUFUKU JR X SANJIROU 4P 46.4% IMF



**9310W YASUFUKU JR X 4P 42.1% IMF**

The sire, **716T**, is the result of a mating **9339W YASUFUKU JR X SANJIROU 4P 46.4% IMF** **9310W YASUFUKU JR X 4P 42.1% IMF** between **Sanjirou** and **Nakayuki** (also the dam of **Kitaguni Jr**) – a classic mating. **Sanjirou** as a dam sire is ranked #4 with an average IMF of 28.83, based on 25 images analyzed. **Herd sire Bar R 4P, son of Sanjirou, is ranked #2 as Dam Sire averaging 31.17% IMF (8 images). See his effort as dam sire pictured.**

Her dam is **BR Ms Kitateruyasudoi-9680 2611** who has been a productive mothering cow for us. One of her daughters (and **0175X's** sister), **1246Y**, is also in the sale as Lot #95. One of her sons out of **LMR Kagemusha 639S** neared the top of USDA grading chart for marbling at **VAB90** and a nearly triple prime IMF%.

**0175X** has already had two offspring for us, is bred to **Shigeshigetani** and due in August. **She tested Homozygous AA for the SCD gene.**

## LMR MS SENSEI 2425Z

LOT  
77

registration no. **FB14929** birthdate **10/18/2012** scd **AA**

sire LMR SENSEI 817T FB8615  
ITOZURUDOI TF151 FB3685  
CF 503 FB5698

dam LMR MS MICHIFUKU 628S FB6639  
MICHIFUKU FB1615  
CHR MS HIRASHIGE 055J FB4832

GROUP	TAJIMA	KEDAKA	TOTTORI	ITOZAKURA	SHIMANE	OKAYAMA	HIROSHIMA	OTHER
<b>C</b>	54%	11%	2%	24%	4%	3%	1%	0%

2013 November WAGYU Group BREEDPLAN  
based on 41,500 Wagyu Group herd

EBV	TRAIT	EBV	ACC	EBV percentiles for 2425Z	
+0.8	birth weight (kg)	+1.9	74%	« HEAVIER	
+9	200-day Wt (kg)	+10	66%		» HEAVIER
+14	400-day Wt (kg)	+17	66%		» HEAVIER
+18	600-day Wt (kg)	+21	61%		» HEAVIER
+1	milk (kg)	-	-		
+0.4	eye muscle area (sq.cm)	-	-		
+0.1	IMF (%)	-	-		
+\$20	fullblood feedlot index	+\$20			» HIGHER

BREED Avg. EBVs  
2012 born calves

100 50 0

Born October of 2012, **LMR MS SENSEI 2425Z** is well rounded along bloodlines, with 54% **Tajima**, 11% **Kedaka**, and 24% **Itozakura**. Sired by **LMR Sensei 817T**, **2425Z** brings his legacy along with her. Remember that **817T** brings the best of **Itozurudoi TF151 (Dai 7 Itozakura)** grandson, **Takeda** specialty, semen no longer available) and **Itoshigenami TF148** (one of the top three Japanese exported bulls ever).

**LMR Itozurudoi 818T**, a full brother of **2425Z's** sire, was used briefly in our breeding program before he was sold to Artisan Cattle in Florida and produced the **AB20** steer pictured at right.

**2425Z** is directly descended from dam **LMR Ms Michifuku 628S** who is a prodigious donor cow for the Lone Mountain breeding program. With 16 calves and 36 viable embryos, **2425Z's** dam also scored a 6.48% IMF on 400-day scan. **628S** is a large framed cow – with a frame score of 6.2. Three of **2425Z's** siblings are also in the sale: **1213Y** (Lot #100) and **1283Y** (Lot #43) and **1292Y** (Lot#58).

**2425Z** sells as a 17 month-old open heifer, ready to breed or flush. She tested Homozygous AA for the SCD Gene.



0117X ITOZURUDOI 818T X TAK 1K 30.66% IMF



sire LMR HIRO 0195X FB11484

dam LMR MS YOJIMBO 0167X FB12372

GROUP	TAJIMA	KEDAKA	TOTTORI	ITOZAKURA	SHIMANE	OKAYAMA	HIROSHIMA	OTHER
D	68%	8%	1%	7%	0%	4%	4%	7%

2013 November WAGYU Group BREEDPLAN  
based on 41,500 Wagyu Group herd

BRED Avg. EBVs 2012 born calves	EBV	TRAIT	EBV	ACC	EBV percentiles for 2436Z
	+0.8	birth weight (kg)	+0.9	73%	HEAVIER <<
	+9	200-day Wt (kg)	+4	62%	<< LIGHTER
	+14	400-day Wt (kg)	+4	63%	<< LIGHTER
	+18	600-day Wt (kg)	+9	57%	<< LIGHTER
	+1	milk (kg)	-	-	
	+0.4	eye muscle area (sq.cm)	-	-	
	+0.1	IMF (%)	-	-	
	+\$20	fullblood feedlot index	+\$11		<< LOWER

**2436Z** is a totally LMR homegrown 68% **Tajima** female with a hearty sprinkling of other bloodlines. She sells as a 16 month-old open heifer, ready to breed or flush very soon.



9274W YOJIMBO X MICHIFUKU 38.70% IMF



9373W YOJIMBO X YASUFUKU JR 36.77% IMF

## LMR MS TOSHIRO 1/3 2029Z

LOT  
79

registration no. **FB16398** birthdate **11/21/2012** scd **AA**

sire LMR TOSHIRO 1/3 (723T) FB7475  
TF KIKUHANA FB2127  
REIKO J1883963 FB2424

dam BR MS TAK-0606 3602 FB5832  
BR TAKAZAKURA 0606 FB5101  
BR MS KITATERUYASUDOI 0653 FB5094

GROUP	TAJIMA	KEDAKA	TOTTORI	ITOZAKURA	SHIMANE	OKAYAMA	HIROSHIMA	OTHER
C	42%	10%	3%	29%	5%	4%	2%	6%



LMR TOSHIRO 723T, SIRE OF 2029Z

Born November 2012, **LMR MS TOSHIRO 2029Z** descends from the well-balanced **Toshiro** line, so one should expect large size with moderate to exciting marbling (due primarily to **Kitaguni 7 No 8's** appearance in the pedigree as the dam sire, we would assume). Add to that **Takazakura's** presence on the **2029Z's** maternal pedigree, combining larger frame size and mature weight as well as marbling, and it's clear **2029Z** is a breeding female meant for adding girth and upping gain.

That being said, she is still 42% **Tajima** – **Kitateruyasudo** ETJ003 is also present in the pedigree – so expect potent marbling as well. In fact, **one of the prized brothers of 2029Z was LMR Toshiro 1/3 9236W who was harvested in the Lone Mountain Fullblood Wagyu beef program and achieved an impressive VAB90 from the USDA (see photo).** This is above average for product in Japan let alone in the U.S.

At the time of writing, **2029Z** is an open heifer and ready to be bred or flushed. **She tested homozygous AA for SCD Gene.**



9236W TOSHIRO X TAKAZAKURA-0606 43.88% IMF



LOT  
80

## LMR MS TOSHIRO 1/3 0151X


 registration no. **FB11172**      birthdate **06/12/2010**      scd **VA**

 sire LMR TOSHIRO 1/3 (723T) FB7475      TF KIKUHANA FB2127  
    REIKO J1883963 FB2424

 dam LMR Ms Tak 1K 765T FB7793      BAR R TAKAZAKURA 1K FB4954  
    BR MS MICHIFUKU 0638 FB5079

GROUP	TAJIMA	KEDAKA	TOTTORI	ITOZAKURA	SHIMANE	OKAYAMA	HIROSHIMA	OTHER
<b>C</b>	41%	10%	3%	29%	5%	4%	2%	7%

 2013 November WAGYU Group BREEDPLAN  
 based on 41,500 Wagyu Group herd

EBV	TRAIT	EBV	ACC	EBV percentiles for 0151X	
+0.8	birth weight (kg)	+0.3	73%	» LIGHTER	
+9	200-day Wt (kg)	+8	63%	LIGHTER «	» HEAVIER
+14	400-day Wt (kg)	+18	60%		» HEAVIER
+18	600-day Wt (kg)	+19	58%		» HEAVIER
+1	milk (kg)	-1	43%	« LOWER	
+0.4	eye muscle area (sq.cm)	+0.3	31%	SMALLER «	
+0.1	IMF (%)	+0.0	31%	LOWER «	
+\$20	fullblood feedlot index	+\$12		« LOWER	

 BREED Avg. EBVs  
 2012 born calves

100      50      0

Born June 2010, **LMR MS TOSHIRO 1-3 0151X** is another example of well-balanced breeding. Sired by **LMR Toshiro 1-3**, who descends from **Kitaguni 7 No 8** and **Dai 7 Itozakura**, **0151X** is balanced out with **Takazakura** and **Michifuku** on her maternal side. **LMR Toshiro 1-3** has sired 10 LMR Fullblood carcasses, ranking #4 with an average IMF (Intramuscular Fat) calculation of 31.26% in the 2014 LMR SPS. **See examples of Toshiro 1-3's progeny pictured at right.**

**Takazakura** is often thought to be a marbling sire, but in actuality passes on growth traits as well. Descended from **Yasufuku J930**, **Takazakura** is regarded as an outstanding new **Tajima** generation leader. **Michifuku** is unmistakable: called "the best carcass bull ever to leave Japan" as well as being a standout in the marbling category in the US Wagyu Sire Summary, this foundation sire's presence in the pedigree rounds out a winning composite breeding female.

With two healthy offspring, **0151X** will bring balance and mothering to your herd. One of her offspring, **LMR Ms Hiro 2438Z**, is Lot #30 in this catalog. And with a respectable IMF scan of 4.98%, **0151X** will surely produce mouthwatering beef steers.

She has been exposed to **Sanjirou**, with a due date of November 2014. In the event she is open, she will sell ready to flush or breed.



0148X TOSHIRO X YASUFUKU JR 29% IMF



9341W TOSHIRO X SANJIROU 4P 37% IMF

**LOT  
81**



registration no. **FB13483**

birthdate 11/26/2011

scd **AA**

sire HARUKI II FB1614

MONJIRO 11550 FB201

SAKURA 2 J741638 FB206

dam LMR MS YOJIMBO 9268W FB10090

LMR YOJIMBO 634S FB6761

LMR RINKO 708T FB7456

GROUP	TAJIMA	KEDAKA	TOTTORI	ITOZAKURA	SHIMANE	OKAYAMA	HIROSHIMA	OTHER
D	65%	14%	0%	1%	0%	3%	8%	10%

1409Y/1441Y x 1442Y

GROUP	TAJIMA	KEDAKA	TOTTORI	ITOZAKURA	SHIMANE	OKAYAMA	HIROSHIMA	OTHER
C	64%	10%	0%	7%	3%	5%	4%	6%

With a 400-day ultrasound scan of 5.89% IMF and an FFI of +\$33, **LMR MS HARUKI 1442Y** is another of those balanced breeding females that's a turnkey investment for your herd.

Born November 2011, **1442Y** is sired by the now famous Haruki II – famous for being a growth animal by pedigree but turning out amazingly marbled large animals. With **Yojimbo** and **Sanjirou** on her maternal side, the investment prospect might become clear: this is not one to miss. This EBV chart exemplifies this: expected results for **1442Y** progeny would be born average size and grow quickly, developing above average size and turning out industry leading marbling. See **LMR Yojimbo x Sanjirou ribeyes** pictured at right.

The dam of **1442Y, LMR Ms Yojimbo 9268W**, has produced 4 calves for LMCC at the young age of 4 – two embryo calves out of the 15 produced in only two flushes; one calf by AI; and one natural service. **9268W** is also in this sale, as Lot #67.

**1442Y** is pregnant by one of our herd sires: **LMR Koichi 1409Y** or **LMR Katsumi 1441Y**, our two **Kitaguni Jr.** full brothers out of a **Yasufuku Jr.** daughter whose marbling reputation precedes them both. She's due in August and will be ready to breed by the end of the year. **In addition, she has tested Homozygous AA for the SCD gene.**

2013 November WAGYU Group BREEDPLAN  
based on 41,500 Wagyu Group herd

BRED Avg. EBVs 2012 born calves		EBV	TRAIT	EBV	ACC	EBV percentiles for 1442Y	
	+0.8		birth weight (kg)	+0.6	62%		» LIGHTER
	+9		200-day Wt (kg)	+11	59%		» HEAVIER
	+14		400-day Wt (kg)	+18	58%		» HEAVIER
	+18		600-day Wt (kg)	+23	57%		» HEAVIER
	+1		milk (kg)	-3	52%	« LOWER	
	+0.4		eye muscle area (sq.cm)	+0.6	42%		» LARGER
	+0.1		IMF (%)	+0.3	42%		HIGHER »
	+\$20		fullblood feedlot index	+\$31			HIGHER »



8185U YOJIMBO X SANJIROU 33.0% IMF



9262W YOJIMBO X SANJIROU 27.80% IMF



## A black cow with the number 1231 on its side, standing in a field. The cow has a green ear tag and is standing on a patch of dark soil. The background shows a grassy field and a line of trees. A small logo for "Bosman" is visible in the bottom right corner of the image.

sire TAKAZAKURA FB2892

dam LMR MS ITOSHIGENAMI 9223W	ITOSHIGENAMI TF148 FB3682
FB9534	BR MS WSU SHINBEI 1805 0641 FB5088

**2013 November Wagyu Group BREEDPLAN**  
based on 41,500 Wagyu Group herd

EBV	TRAIT	EBV	ACC
+0.8	birth weight (kg)	-0.5	75%
+9	200-day Wt (kg)	+5	67%
+14	400-day Wt (kg)	+8	67%
+18	600-day Wt (kg)	+8	64%
+1	milk (kg)	-3	50%
+0.4	eye muscle area (sq.cm)	-2.4	49%
+0.1	IMF (%)	0.0	50%
+\$20	fullblood feedlot index	+0.0	

**BREED Avg. EBVs**  
2012 born calves

**EBV percentiles for 1231Y**

100 50 0

9386W TF148 X MICH-8614 34% IMF

## LMR MS YOJIMBO 0166X

LOT  
83
 registration no. **FB12371** birthdate **07/28/2010** scd **VA**

sire LMR YOJIMBO 634S FB6761  
 sire BAR R FUKUTSURU 36H FB4235  
 sire BR MS YASUFUKU 0609 FB5082

dam BR MS TAK-0606 4622 FB6247  
 dam BR TAKAZAKURA 0606 FB5101  
 dam BR MS MICHIFUKU7602 1613 FB5095

GROUP	TAJIMA	KEDAKA	TOTTORI	ITOZAKURA	SHIMANE	OKAYAMA	HIROSHIMA	OTHER
D	64%	4%	1%	12%	1%	7%	3%	7%

 2013 November WAGYU Group BREEDPLAN  
 based on 41,500 Wagyu Group herd

EBV	TRAIT	EBV	ACC	EBV percentiles for 0166X	
+0.8	birth weight (kg)	+0.9	62%	HEAVIER <	
+9	200-day Wt (kg)	+5	56%	< LIGHTER	
+14	400-day Wt (kg)	+6	54%	< LIGHTER	
+18	600-day Wt (kg)	+9	50%	< LIGHTER	
+1	milk (kg)	-6	46%	< LOWER	
+0.4	eye muscle area (sq.cm)	-0.1	30%	SMALLER <	
+0.1	IMF (%)	+0.1	31%		HIGHER >
+\$20	fullblood feedlot index	+\$5		< LOWER	

 BREED Avg. EBVs  
 2012 born calves

100 50 0

Born July 2010, **LMR MS YOJIMBO 0166X** hails from our own **LMR Yojimbo 634S**. With **Takazakura** and **Michifuku** on her maternal side, **0166X** is a winning composite lot. Take **Takazakura's** growth and marbling balancing act and add **Michifuku's** unforgettable legacy as "the best carcass bull ever to leave Japan", and it's apparent why this should be top on your list.

We can only guess about **Yojimbo's** future as Dam Sire, but if we look no further than his initial results in the Lone Mountain Sire Performance Study it seems almost assured: average 29.64% IMF with 12 carcass images analyzed - less than 1% difference between **Yojimbo** and **Shigeshigetani**! His average USDA grade is **AB50**! The makings of a great Dam Sire, we believe. **Examples of Yojimbo marbling are seen pictured at right.**

**0166X** has never been flushed, but if heredity holds true to form it should be noted that her dam (**BR Ms Tak-0606 4622**) produced 46 viable embryos in her first 5 flushes. **0166X** was a result of the flush to sexed **Yojimbo** semen that produced 17 viable embryos. And as a matter of fact, five (5) of those sexed **Yojimbo** embryos that will produce full sisters to **0166X** are in this Sale Catalog as Lot #102. In addition, **0166X's** daughter by **LMR Hiro 0195X**, **LMR Ms Hiro 2443Z**, (one of the younger heifers in this sale) is in the Sale catalog as Lot #57.

**0166X** was exposed by AI to **Sanjirou** in February with an expected due date of November 2014. In the event she is open, she will sell ready to flush or breed.



8155U YOJIMBO X MICHIFUKU 40.2% IMF



9274W YOJIMBO X MICHIFUKU 38.70% IMF



LOT  
84

## LMR MS ITOMICHI 1/2 1266Y

registration no. **FB12401** birthdate **07/14/2011** scd **VV**

sire TF ITOMICHI 1-2 FB2126  
ITOMICHI J1158 FB500  
DAI 2 KINTOU J337756 FB464

dam LMR MS TAK-3612 752T FB7782  
BR TAKAZAKURA-0606 3612 FB5972  
BR MS MICH-8614 3606 FB6245

GROUP	TAJIMA	KEDAKA	TOTTORI	ITOZAKURA	SHIMANE	OKAYAMA	HIROSHIMA	OTHER
<b>C</b>	43%	2%	1%	32%	7%	6%	7%	2%

2013 November WAGYU Group BREEDPLAN  
based on 41,500 Wagyu Group herd

EBV	TRAIT	EBV	ACC	EBV percentiles for 1266Y	
+0.8	birth weight (kg)	+1.5	61%	HEAVIER <<	
+9	200-day Wt (kg)	+11	58%		>> HEAVIER
+14	400-day Wt (kg)	+16	58%		>> HEAVIER
+18	600-day Wt (kg)	+23	56%		>> HEAVIER
+1	milk (kg)	+3	51%		>> HIGHER
+0.4	eye muscle area (sq.cm)	+1.7	39%		LARGER >>
+0.1	IMF (%)	0.0	40%	LOWER <<	
+\$20	fullblood feedlot index	+\$19			>> HIGHER

BRED Avg. EBVs  
2012 born calves

100 50 0

Born July of 2011, **LMR MS ITOMICHI 1/2 1266Y** is daughter of Takeda Farm's **TF Itomichi 1-2**, the grandson of **Dai 7 Itozakura**. Astute breeders have used **TF Itomichi 1-2** genetics to increase the mature size, growth rate and milk (in the top 1% for Milk EBV compared to 3,871 bulls studied by BREEDPLAN) without impacting marbling negatively. **Examples of Itomichi 1-2's ability as a dam sire and grandsire of dam are pictured.**

In addition, **TF Itomichi 1-2**, is ranked as the #3 Dam Sire in the 2014 LMR SPS, besting both **Michifuku** and **Sanjirou**. **1266Y** further espouses balancing factors by rounding out the **Itozakura** line (32%) with a 43% **Tajima** lineage.

Her dam – **LMR Ms Tak-3612 752T** – has had eight offspring, and each is a great example of how this balanced breeding can add dividends to your herd: one produced double prime beef for our Wagyu program, and two offspring have netted supreme 400-day scans for IMF percentage. Three sisters are being held back to remain in the LMCC breeding program.

Currently pregnant to AI sire **Michifuku**, the calf is due in March; **1266Y** will be ready to breed again once she sets foot on your land.



9391W TF148 X ITOMICHI 1-2 35% IMF



9394W TF148 X MICH-1628 30% IMF

## LMR MS HARUKI 1234Y

LOT  
85

registration no. **FB12387** birthdate **06/20/2011** scd **VA**

sire **HARUKI II FB1614** | **MONJIRO 11550 FB201**  
**SAKURA 2 J741638 FB206**

dam **LMR MS ITOZURUDOI 815T FB11177** | **ITOZURUDOI TF151 FB3685**  
**CF 503**

GROUP	TAJIMA	KEDAKA	TOTTORI	ITOUZAKURA	SHIMANE	OKAYAMA	HIROSHIMA	OTHER
<b>C</b>	50%	19%	0%	16%	3%	0%	6%	6%

2013 November WAGYU Group BREEDPLAN  
 based on 41,500 Wagyu Group herd

EBV	TRAIT	EBV	ACC	EBV percentiles for 1234Y	
+0.8	birth weight (kg)	-0.6	76%		LIGHTER »
+9	200-day Wt (kg)	+11	65%		» HEAVIER
+14	400-day Wt (kg)	+15	67%		» HEAVIER
+18	600-day Wt (kg)	+20	64%		» HEAVIER
+1	milk (kg)	+4	54%		HIGHER »
+0.4	eye muscle area (sq.cm)	-0.1	48%	SMALLER «	
+0.1	IMF (%)	+0.4	49%		HIGHER »
+20	fullblood feedlot index	+33			HIGHER »

100 50 0

Finding a good breeding female with a sweet-spot balance between growth and marbling is what we're all here to do. **LMR MS HARUKI 1234Y** brings these qualities in spades. Ranking in BREEDPLAN's top 15% for both IMF EBV and her well-above-average Fullblood Feedlot Index (FFI) of +\$33, **1234Y** and her future progeny will be sure to carry that balancing act forward throughout your breeding program.

Sired by **Haruki II** – the famous balanced son of heavy-hitting **Monjiro** – **1234Y** is a full daughter of **LMR Ms Itozurudoi 815T**, the outstanding Lot #4. With her lineage including the famed Takeda Farm's **Itozurudoi TF151** and **Itoshigenami TF148**, claimed by Blackmore to be one of the top three bulls ever to leave Japan, **1234Y** is the animal folks will be talking about for years.

**Itoshigenami TF148** is a son of **Shigeshigenami** who is the #4 bull in Kenichi Ono's first volume of *The Outstanding Wagyu of Japan*. Ono wrote: "**Tajima** breeding consists of three lines: **Kumanami**, **Naka-Doi** and **Oku- Doi**. A bull named **Shigeshigenami** is the reason the **Kumanami** line is on that elite list." In 1983, at a Tokyo dressed-carcass competition, progeny of **Shigeshigenami** managed the unusual feat of winning first and second place in the steer category. Ono concludes, "There is only one **Yasufuku** and **Shigeshigenami**!"

Born late June 2011, **1234Y** is open and ready to breed or flush, as you like when she arrives on your land. This will be the first offspring for **1234Y**; incidentally, Lone Mountain is keeping her four sisters in our breeding program.



LOT  
86

## LMR MS KITAMICHI 101R 8117U

registration no. **FB8325** birthdate **03/13/2008** scd **VA**

sire LMR KITAMICHI 101R FB6547

BR KITATERUYASUDO1 0632 FB5267  
BR MS ITOMICHI-0602 2663 FB5978

dam LMR MS SANJIROU 601S FB6286

SANJIROU FB2501

CHR MS ELM

GROUP	TAJIMA	KEDAKA	TOTTORI	OTHER
D	83%	3%		2% 3%

EBV	TRAIT
+0.8	birth weight (kg)
+2	weaning weight (kg)
-2	milk (kg)
-1	eye muscle area (sq.cm)
+0.4	IMF (%)
+0.1	fullblood feedlot index
+\$20	

2013 November  
Group BREEDPLAN  
Group herd

EBV percentiles for 8117U

EBV	PERCENTILE
birth weight (kg)	81%
weaning weight (kg)	60%
milk (kg)	57%
eye muscle area (sq.cm)	43%
IMF (%)	39%
fullblood feedlot index	

OUT OF SALE

One of our most linebred **Tajima** lots on offer here! Born March of 2008, **LMR MS KITAMICHI 101R 8117U** includes the best of the **Tajima** line: **Kitatateruyasudo1 ETJ003**, **Sanjirou** and **JVP 068**.

Her dam **LMR Ms Sanjirou 601S** is an embryo calf from Ralph Valdez' great breeding program, and was the first calf born at LMR in 2006. She remains a productive LMR favorite - 11 outstanding calves and counting. In fact, a daughter of **601S** (and sister of **9337W**) joins the sale ranks as well: **3419A**, a fifteen month old open heifer, can be found as Lot #73.

**8117U's** brother by **Yasufuku Jr, 9344W**, who was harvested in the Lone Mountain Fullblood Wagyu beef program and resulted in a scale-topping **VAB100 USDA Quality Grade** (see pictured). And **8117U** has a pregnant sister also by **Yasufuku Jr, 9337W**, in the sale as Lot #7.

**8117U** had a son (**0209X**) by **LMR Akahige 8119U** who achieved a very respectable AB70 in our Fullblood beef program.

**8117U** is exposed to **Toshiro 723T** and if bred will calve in November.



9344W YASUFUKU JR X SANJIROU 37.1% IMF

## LMR MS TAK-3612 1227Y

LOT  
87
 registration no. **FB12141** birthdate **04/10/2011** scd **VA**

sire **BR TAKAZAKURA-0606 3612 FB5972** | **BR TAKAZAKURA 0606 FB5101**  
**BR MS SANJIROU 0656 FB5091**

dam **LMR KEIKO 642S FB6903** | **BAR R FUKUTSURU 36H FB4235**  
**BR MS ITOMICHI-0602 2663 FB5978**

GROUP	TAJIMA	KEDAKA	TOTTORI	ITOUZAKURA	SHIMANE	OKAYAMA	HIROSHIMA	OTHER
D	73%	4%	2%	4%	1%	6%	3%	6%

## MICHIFUKU x 1227Y

GROUP	TAJIMA	KEDAKA	TOTTORI	ITOUZAKURA	SHIMANE	OKAYAMA	HIROSHIMA	OTHER
D	84%	4%	2%	0%	0%	4%	2%	5%

2013 November WAGYU Group BREEDPLAN  
based on 41,500 Wagyu Group herd

EBV	TRAIT	EBV	ACC	EBV percentiles for 1227Y	
+0.8	birth weight (kg)	+0.7	73%	» LIGHTER	
+9	200-day Wt (kg)	+8	62%	LIGHTER <<	
+14	400-day Wt (kg)	+11	59%	LIGHTER <<	
+18	600-day Wt (kg)	+15	57%	LIGHTER <<	
+1	milk (kg)	-	-		
+0.4	eye muscle area (sq.cm)	+0.6	33%		» LARGER
+0.1	IMF (%)	0.0	35%	LOWER <<	
+\$20	fullblood feedlot index	+\$10		<< LOWER	

100 50 0

Sired by a **Takazakura** descendent, **LMR MS TAK-3612 1227Y** walks into the sale ring with that now famous **Takazakura** legacy of balancing marbling with impressive growth. The dam of **1227Y** is **LMR Keiko 642S** whose 400-day ultrasound scan rang out a powerful 5.47% IMF. Any progeny from this pairing is sure to bring with it this wonderful combination of traits.

Though not enough data has been collected on **Takazakura**, or any of his sons, for him to be included on the Dam Sire rankings of the Sire Study, **his prowess is on full display with 9236W as you can see pictured at right.** **Toshiro 1-3** sired **9236W**. **BR Takazakura 0606** – sire of **Tak-3612** – was the dam sire.

Born in April of 2011, **1227Y** has an **Itoshigenami TF148** son that is on track to bring dividends in the Lone Mountain Wagyu beef program.

With 73% **Tajima** genetics in her and a sprinkling of other bloodlines, **1227Y** includes in her pedigree the outstanding and long-famous **JVP Fukutsuru 068** and his magical marbling heredity.

She is currently confirmed bred to AI sire **Michifuku** and is due in August, ready to continue reliable breeding by the end of the year.



9236W TOSHIRO X TAKAZAKURA-0606 43.88% IMF



LOT  
88

## LMR MS KITAGUNI 2322Z


 registration no. **FB13692**      birthdate **03/11/2012**      scd **VA**

 sire **KITAGUNI JR FB2422**      **KITAGUNI 7 NO 8 J1530 FB581**  
    **NAKAYUKI J13943 FB2893**

 dam **BR MS ITOMICHI/0602 3655 FB6516**      **BR ITOMICHI 0602 FB5100**  
    **BR MS MICHIFUKU 1605 FB6207**

GROUP	TAJIMA	KEDAKA	TOTTORI	ITOUZAKURA	SHIMANE	OKAYAMA	HIROSHIMA	OTHER
<b>C</b>	46%	9%	1%	25%	8%	8%	2%	1%

TF150 x 2322Z

GROUP	TAJIMA	KEDAKA	TOTTORI	ITOUZAKURA	SHIMANE	OKAYAMA	HIROSHIMA	OTHER
<b>D</b>	73%	4%	1%	12%	4%	4%	1%	0%

Born March 2012, **LMR MS KITAGUNI 2322Z** is one of the 12 calves birthed by the incredibly fertile dam **BR Ms Itomichi-0602 3655**, one of the best investments LMR ever made. With 45 viable embryos and 12 calves, pregnant again at 10 years old going on 11, **3655** tops our list of breeding powerhouses. Her daughter **2322Z** should follow suit.

**Kitaguni** is ranked as the **#1 IMF Sire** in the **2014 LMR Sire Performance Study (SPS)** with an average of **35.31%** with **9 carcass imaged results**. Evidence proving his brilliance is shown pictured at right. We fully expect **Kitaguni Jr** to distinguish himself in the SPS Dam Sire rankings in the near future.

Her sister **749T** (also in the sale as Lot #94) is an outstanding six year old donor, having produced 42 viable embryos for us, resulting in 14 calves (in addition to her 3 calves by AI). Three of **2322Z's** brothers have been harvested in Lone Mountain's Wagyu beef program with outstanding results in both yield and quality. Another of **2322Z's** brothers **LMR Michiro 0193X** is one of our herd sires, selected two years ago for his impeccable potential – Pedigree, IMF, Regal Bearing: **0193X** had it all. And another sibling, **1455Y**, is in the sale as Lot #97.

**2322Z** was exposed to **Kikuterushige TF150** (rarely used in the US, but over 1000 calves are registered in Australia) and due in November, if bred. If not, she will sell open and ready to breed or flush. Footnote: **TF150** ranks in the top 5% for IMF EBV.

 2013 November WAGYU Group BREEDPLAN  
 based on 41,500 Wagyu Group herd

EBV	TRAIT	EBV	ACC	EBV percentiles for 2322Z	
+0.8	birth weight (kg)	-0.7	57%	LIGHTER >	
+9	200-day Wt (kg)	+3	55%	< LIGHTER	
+14	400-day Wt (kg)	-3	54%	< LIGHTER	
+18	600-day Wt (kg)	-5	52%	< LIGHTER	
+1	milk (kg)	0	50%	< LOWER	
+0.4	eye muscle area (sq.cm)	-1.1	40%	< SMALLER	
+0.1	IMF (%)	+0.4	41%	HIGHER >	
+\$20	fullblood feedlot index	+\$5		< LOWER	

BRED Avg. EBVs  
2012 born calves

8157U KITAGUNI X SANJIROU 34.2% IMF

## LMR MS HARUKI 1215Y

LOT  
89

registration no. **FB11920** birthdate **03/12/2011** scd **AA**

sire **HARUKI II FB1614** | **MONJIRO 11550 FB201**  
**SAKURA 2 J741638 FB206**

dam **LMR MS TAK-3612 731T FB7763** | **BR TAKAZAKURA-0606 3612 FB5972**  
**BR MS KIKUHANA 8610 FB4476**

GROUP	TAJIMA	KEDAKA	TOTTORI	ITOZAKURA	SHIMANE	OKAYAMA	HIROSHIMA	OTHER
<b>C</b>	53%	14%	0%	13%	1%	4%	7%	8%

2013 November WAGYU Group BREEDPLAN  
 based on 41,500 Wagyu Group herd

EBV	TRAIT	EBV	ACC	EBV percentiles for 1215Y	
+0.8	birth weight (kg)	+0.4	74%		➤ LIGHTER
+9	200-day Wt (kg)	+12	66%		➤ HEAVIER
+14	400-day Wt (kg)	+20	62%		➤ HEAVIER
+18	600-day Wt (kg)	+26	61%		➤ HEAVIER
+1	milk (kg)	+2	50%		➤ HIGHER
+0.4	eye muscle area (sq.cm)	+1.0	40%		➤ LARGER ➤
+0.1	IMF (%)	+0.1	41%		➤ HIGHER
+\$20	fullblood feedlot index	+\$26			➤ HIGHER

100 50 0

**LMR MS HARUKI 1215Y** was sired by **Haruki II**, and displays the outstanding **Takazakura** and **TF Kikuhana** on the maternal side of her pedigree. This impeccable composite consists of 53% **Tajima**, 14% **Kedaka** and 13% **Itozakura**. **Kikuhana** was grand-sired by **Dai 7 Itozakura**, who, according to Kenichi Ono, became known as the smartest economic investment among all Wagyu strains, known for his good daily weight gain, peaceful disposition and early maturation.

And **1215Y** is proving those characteristics descended through the line. With notable assessments of Milk, Weights and REA; above average Frame Score of 4.6; and 4.97% IMF at 400-day scan, this balanced animal and her winning legacy will bring outstanding returns.

Having delivered a **TF Itohana 2** bull calf in March, **LMR MS HARUKI 1215Y** is a fabulous composite female, and she'll be ready to breed upon purchase. In addition, **1215Y** has tested **Homozygous AA** for the **SCD** gene.



LOT  
90

## LMR MS SANJIROU 4P 2406Z


 registration no. **FB14550**      birthdate **09/12/2012**      scd **AA**

 sire **BAR R SANJIROU 4P FB5663**      **SANJIROU FB2501**  
    **BAR R MISS FUKUTSURU 47K FB5098**

 dam **LMR MS TAK 12P 825T FB8765**      **BAR R 12P TAK LMR FB5665**  
    **BAR R MISS 24H FB4229**

GROUP	TAJIMA	KEDAKA	TOTTORI	ITOUZAKURA	SHIMANE	OKAYAMA	HIROSHIMA	OTHER
<b>B</b>	84%	4%	2%	2%	0%	4%	1%	3%

 2013 November WAGYU Group BREEDPLAN  
 based on 41,500 Wagyu Group herd

EBV	TRAIT	EBV	ACC	EBV percentiles for 2406Z	
+0.8	birth weight (kg)	+0.1	76%	LIGHTER »	
+9	200-day Wt (kg)	+4	66%	« LIGHTER	
+14	400-day Wt (kg)	+5	65%	« LIGHTER	
+18	600-day Wt (kg)	+5	62%	« LIGHTER	
+1	milk (kg)	-	-		
+0.4	eye muscle area (sq.cm)	-0.7	40%	« SMALLER	
+0.1	IMF (%)	+0.3	42%		HIGHER »
+\$20	fullblood feedlot index	+\$5		« LOWER	

 BREED Avg. EBVs  
 2012 born calves

100      50      0

Born September of 2012, **LMR MS SANJIROU 4P 2406Z** represents one of our most highly influenced **Tajima** linebred females with three famous and popular sires appearing on both sides of her pedigree: **Sanjirou**, **Fukutsuru JVP068** and **Michifuku**.

**Bar R Sanjirou 4P**, co-owned by LMCC and Jerry Reeves, is ranked the #2 Dam Sire in the 2014 LMR Sire Performance Study averaging 31.17% IMF with 8 progeny imaged – ranking better than both his sire **Sanjirou** and his grandsire, **Michifuku** – standing behind only **Yasufuku Jr** in the study. See evidence of his potential as a dam sire pictured at right.



9339W YASUFUKU JR X SANJIROU 4P 46.4% IMF



9341W TOSHIRO X SANJIROU 4P 37% IMF

**2406Z's** dam, **825T**, was sired by one of the first two bulls purchased by LMCC in 2005, **Bar R 12P Takazakura**. One of **2406Z's** brothers by **Hirashigetayasu ETJ001** delivered one of Lone Mountain's greatest REA measurements at harvest (16.8), as well as a Prime Plus carcass.

**2406Z** is an 18-month old open heifer, ready to be bred. She tested **Homozygous AA** for SCD Gene.

## LMR MS ITOMICHI-4632 761T

LOT  
91
 registration no. **FB7789** birthdate **10/10/2007** scd **VA**

sire BR ITOMICHI/0602 4632 FB6521  
 BR ITOMICHI 0602 FB5100  
 BR MS KITATERU-9680 2611 FB5824

dam BR MS MICHU-8614 2660 FB5830  
 BR MICHIFUKU 8614 FB4756  
 BR MS TAKAZAKURA 9640 FB4826

GROUP	TAJIMA	KEDAKA	TOTTORI	ITOZAKURA	SHIMANE	OKAYAMA	HIROSHIMA	OTHER
<b>C</b>	63%	9%	5%	7%	2%	6%	3%	6%

 2013 November WAGYU Group BREEDPLAN  
 based on 41,500 Wagyu Group herd

EBV	TRAIT	EBV	ACC	EBV percentiles for 761T	
+0.8	birth weight (kg)	+1.4	78%	HEAVIER <<	>> HEAVIER
+9	200-day Wt (kg)	+15	68%		HEAVIER >
+14	400-day Wt (kg)	+17	68%		HEAVIER >
+18	600-day Wt (kg)	+22	64%		HIGHER >
+1	milk (kg)	+3	49%		HIGHER >
+0.4	eye muscle area (sq.cm)	-0.6	41%	<< SMALLER	
+0.1	IMF (%)	+0.1	44%		HIGHER >
+\$20	fullblood feedlot index	+\$17		LOWER <<	

100 50 0

Take a couple looks at that EBV, and you'll see a few of the merits of **LMR MS ITOMICHI-4632 761T**. She is a growth animal and a great mother with strong milk production. Born October of 2007, she's got **Itomichi** on her paternal side, and **Michifuku/Takazakura** on her maternal side, accounting for her 63% **Tajima** bloodline. **Itomichi-0602 4632**, whose lineage traces to both **TF Itomichi 1-2** and **Kitateruyasudoi ETJ003**, sired **761T** – both these bulls are powerhouse Wagyu foundation sires, still very much in service throughout the breed.

The **TF Itomichi 1-2** legacy: growth and great mothering ability with a penchant for strong marbling. Note that **his Milk EBV ranks in the top 1%** of almost 4,000 bulls analyzed by BREEDPLAN – and the **#3 Dam Sire ranking** in the 2014 LMR Sire Performance Study averaging 28.96% IMF on 7 carcasses. **Examples of Itomichi-0602's ability as a Dam Sire are pictured at right.**

She comes from dam **BR Ms Michifuku-8614 2660**, who is an outstanding flush cow, producing a remarkable 58 viable embryos in just 5 flushes, including 16 in the November 2013 flush - average over 11 per flush. Almost 12 years old, **2660** has already produced 24 calves for Lone Mountain, including **LMR Ms Itoshigefuji 9200W** whose daughter **LMR Ms Kenichi 3432A** is in the sale as Lot #75.

**761T** is just entering the prime of her fertile days; already one of her sons **0146X** joined the Lone Mountain Fullblood Wagyu beef program producing a double-prime carcass.

**761T** is exposed to **Shigesigetani** and if bred will calve in December.



9240W SANJIROU 4P X ITOMICHI-0602 34.3% IMF



9394W TF148 X ITO-0602 30.14% IMF



## A black and white photograph of a black cow standing in profile on a dry, sandy ground. The cow is facing left. In the background, there is a line of green bushes or trees. A small, stylized signature 'Broomby ©' is visible in the lower right corner of the image.

0203X ETJ001 X SANJIROU 34% IMF

## LMR MS MICHIRO 3200A

LOT  
93

registration no. **FB15667** birthdate **01/20/2013** scd **VA**

sire LMR MICHIRO 0193X FB13473  
HARUKI II FB1614  
BR MS ITOMICHI/0602 3655 FB6516

dam LMR MS AIZATZURUDOI 9308W  
FB12810  
BLACKMORE AIZATZURUDOI Y398 FB10220  
LMR MS MICHIFUKU 628S FB6639

GROUP	TAJIMA	KEDAKA	TOTTORI	ITOUZAKURA	SHIMANE	OKAYAMA	HIROSHIMA	OTHER
D	61%	10%	1%	13%	2%	3%	4%	4%



MICHIRO 0193X, SIRE OF 3200A

**LMR MS MICHIRO 3200A** has a batch of famed Blackmore genetics in her from her dam, **LMR Ms Aizatzurudo 9308W**. **9308W's** dam sire is **Aizatzurudo Y398**, the sire that David Blackmore groomed as the replacement for **Itozurudo 151**, chosen as the best bloodline for breeding a balance of phenomenal female replacements and steer carcasses of outstanding meat quality. **Y398's** dam (**Aizakura U100**) was in fact Blackmore's number one breeding cow, excelling in conformation, great milking ability, and excellent fertility (producing up to 30 embryos in a flush).

From Blackmore's website: "**Aizakura U100** was sired by **Kikutsurudo TF146**, a combination of **Tanifukudo** (**Tajima's** highly regarded sire) and the famous '**Hyogo Cow**' **Kikutsuru**, recognized as the cow which had the single most influence in increasing size and carcass quality in **Tajima** bloodlines. **Aizatzurudo Y398's** sire **JVP Fukutsuru 068** is also a breeding combination of the **Kikutsuru's** famous son, **Dai 2 Yasutsurudo** and her great granddaughter, **Teruyasu**. Crossing **Fukutsuru 068** and **Kikutsurudo TF146** stabilizes the strong heritability influence of the great bloodlines of **Kikutsuru**."

Rounding out the pedigree of **3200A** is a great composite of powerhouses. She was sired by our own herd sire, **LMR Michiro 0193X**, selected two years ago for his impeccable potential - see pedigree, IMF, Regal Bearing - he had it all. Add in that mega-marbling **Michifuku** on her maternal side, and the epic potential of this breeding female becomes clear.

The first calf born at Lone Mountain Ranch in 2013 and the first calf sired by **Michiro 0193X**, **3200A** is an open heifer, and will be ready to bring that legacy to your breeding program upon landing on your property.



LOT  
94

## LMR MS TAK-3612 749T

registration no. **FB7780** birthdate **10/03/2007** scd **VA**sire BR TAKAZAKURA-0606 3612 FB5972  
BR TAKAZAKURA 0606 FB5101  
BR MS SANJIROU 0656 FB5091dam BR MS ITOMICHI/0602 3655 FB6516  
BR ITOMICHI 0602 FB5100  
BR MS MICHIFUKU 1605 FB6207

GROUP	TAJIMA	KEDAKA	TOTTORI	ITOUZAKURA	SHIMANE	OKAYAMA	HIROSHIMA	OTHER
<b>C</b>	65%	4%	2%	13%	2%	6%	3%	4%

## YASUFUKU JR x 749T

GROUP	TAJIMA	KEDAKA	TOTTORI	ITOUZAKURA	SHIMANE	OKAYAMA	HIROSHIMA	OTHER
<b>D</b>	76%	2%	1%	7%	1%	3%	2%	8%

With an EBV connoting outstanding eye muscle as well as retail yield, **LMR MS TAK-3612 749T** will surely bring added value to any burgeoning beef business. She is also a very good flush cow; she has produced 42 viable embryos in just 5 flushes. That's a productive breeder!

Since **Tak-3612** will be the dam sire of your progeny, it may be worth looking at **Takazakura** and his sons and grandsons' ability as dam sire, since one must assume that growth and marbling are two of the traits most likely to be inherited. **Pictured at right, see the result of the work by Takazakura and his son, Tak 1K as dam sire.**

Born October of 2007, **749T** descends from a winning trifecta of foundation sires: a **Takazakura** grandson on the paternal side, with **Itomichi** and **Michifuku** represented on the maternal side. **749T** has spawned 17 calves, including: Two daughters in the sale: **1410Y** (at Lot #55) and **1422Y** (at Lot #24).

**749T** is one of the 12 calves birthed by the incredibly fertile dam **BR Ms Itomichi-0602 3655**, one of the best investments LMR ever made. With 45 viable embryos and 12 calves, pregnant again at 10 years old going on 11, **3655** tops our list of breeding powerhouses. Three of her daughters in the sale today, including two sisters of **749T**: **1455Y** as Lot #97 and **2322Z** as Lot #88.

**749T** is pregnant to **Yasufuku Jr.** and due in August.

2013 November WAGYU Group BREEDPLAN  
based on 41,500 Wagyu Group herd

EBV	TRAIT	EBV	ACC	EBV percentiles for 749T	
+0.8	birth weight (kg)	+1.3	69%	HEAVIER <	
+9	200-day Wt (kg)	+10	67%		> HEAVIER
+14	400-day Wt (kg)	+12	68%	LIGHTER <	
+18	600-day Wt (kg)	+20	62%		> HEAVIER
+1	milk (kg)	-4	46%	< LOWER	
+0.4	eye muscle area (sq.cm)	+1.4	42%		LARGER >
+0.1	IMF (%)	-0.3	45%	< LOWER	
+\$20	fullblood feedlot index	+\$5		< LOWER	
Breed Avg. EBVs 2012 born calves				100	50



9236W TOSHIRO X TAK-0606 43.88% IMF



0117X ITOZURUDOI 818T X TAK 1K 30.66% IMF

## LMR MS HIRASHIGETAYASU 1246Y

LOT  
95

registration no. **FB12394** birthdate **06/28/2011** scd **AA**

sire **HIRASHIGETAYASU ETJ001 FB670**  
 DAI 20 HIRASHIGE J287 FB330  
 DAI 5 YURUHIME FB669

dam **BR MS KITATERU-9680 2611 FB5824**  
 BR KITATERUYASUDO I 9680 FB4934  
 BR MS FUKUTSURI 9661 FB4943

GROUP	TAJIMA	KEDAKA	TOTTORI	ITOZAKURA	SHIMANE	OKAYAMA	HIROSHIMA	OTHER
<b>C</b>	54%	21%	7%	2%	0%	14%	0%	1%

2013 November WAGYU Group BREEDPLAN  
 based on 41,500 Wagyu Group herd

EBV	TRAIT	EBV	ACC	EBV percentiles for 1246Y	
+0.8	birth weight (kg)	+2.9	76%	« HEAVIER	HEAVIER »
+9	200-day Wt (kg)	+18	66%		HEAVIER »
+14	400-day Wt (kg)	+28	69%		HEAVIER »
+18	600-day Wt (kg)	+37	66%		HIGHER »
+1	milk (kg)	+6	57%		LARGER »
+0.4	eye muscle area (sq.cm)	+1.5	55%	« LOWER	
+0.1	IMF (%)	-0.2	56%		HIGHER »
+\$20	fullblood feedlot index	+\$29			

BREED Avg. EBVs  
 2012 born calves

100 50 0

Born in June 2011, **LMR MS HIRASHIGETAYASU 1246Y** is a daughter of **Hirashigetayasu ETJ001** whose reputation for outstanding growth precedes him. Remember that **ETJ001** is the son of **Dai 20 Hirashige** who Prof. Kenichi Ono called the "elite of elite" and one of the most significant bulls of the **Kedaka** line. The semen of **Dai 20 Hirashige** is in short supply, available at the pretty penny of \$1000 per straw. But the outstanding traits of that "Super Bull" have been kicked down the line to **1246Y**. To see the potential of **ETJ001** as a dam sire see at right a picture of one of his progeny, **0203X**, graded **AB90**.

And with the foundation sires **ETJ003** and **JVP Fukutsuru 068** also present in this pedigree, **1246Y** brings a composite 54% **Tajima**, 21% **Kedaka**, 14% **Okayama** breeding that will bring dividends, regardless of your breeding goals.

The EBV of **1246Y** shows outstanding growth (top 5% in weight EBVs comparing 37,641 Wagyu dams) can be expected, as well as excellent milk (top 5% EBV) and retail beef yield (top 5% EBV), with an FFI of +\$29. And think of this: one brother of **1246Y** (sired by **LMR Kagemusha 639S**) scored a top-of-the-chart **VAB90** for USDA marbling in the Lone Mountain Wagyu beef program. A sister, **0175X**, is in the sale as Lot #76.

**1246Y** was AI'd to foundation sire **Sanjiro**, in February and if confirmed bred, will be due in November. She tested **Homozygous AA** for the **SCD** gene.



**0203X ETJ001 X SANJIROU 34% IMF**



## A black cow stands in profile in a dry, open field. The number "2337" is painted in white on its hindquarters. The background shows a line of trees and a distant hill under a clear sky. A small signature "Browney ©" is visible in the lower right corner of the image.

0117X ITOZURUDOI 818T X TAK 1K 30.66% IMF

## LMR MS TAK-3612 1455Y

LOT  
97
 registration no. **FB13486** birthdate **12/11/2011** scd **VA**

 sire **BR TAKAZAKURA-0606 3612 FB5972**  
     **BR TAKAZAKURA 0606 FB5101**  
     **BR MS SANJIROU 0656 FB5091**

 dam **BR MS ITOMICHI/0602 3655 FB6516**  
     **BR ITOMICHI 0602 FB5100**  
     **BR MS MICHIFUKU 1605 FB6207**

GROUP	TAJIMA	KEDAKA	TOTTORI	ITOZAKURA	SHIMANE	OKAYAMA	HIROSHIMA	OTHER
<b>D</b>	65%	4%	2%	13%	2%	6%	3%	4%

1409Y/1441Y x 1455Y

GROUP	TAJIMA	KEDAKA	TOTTORI	ITOZAKURA	SHIMANE	OKAYAMA	HIROSHIMA	OTHER
<b>D</b>	64%	5%	1%	14%	4%	7%	2%	4%

This is one of those animals that exemplifies that old adage, "You are the company you keep." **LMR MS TAK-3612 1455Y** comes from a dam (**BR Ms Itomichi/0602 3655**) that has been very productive and successful for Lone Mountain's breeding program: 45 embryos and a dozen live calves. **3655** is 10 ½ years old, bred to one of our **Kitaguni Jr** herd sires and due to calve this coming August. Worth noting is **0181X** (pictured at right), whose dam sire was a grandson of **BR Itomichi-0602**. Marbling does run in families – and **3655** has definitely benefited by the inclusion of his genetics, as no doubt will **1455Y**.

Her full sister **749T** (also in the sale as Lot #94) is an excellent flush cow, producing 42 viable embryos for us, resulting in 14 calves (in addition to her 3 calves by AI) – and she is only 6 years old. Two sisters by **Takazakura**, **0164X** & **0165X**, measured extraordinary IMF scans at 400 days: 6.96% and 6.36%, respectively.

Three of **1455Y's** brothers have been harvested in Lone Mountain's Wagyu beef program with excellent retail beef yield and marbling. Her sister **2322Z** is also in the sale as Lot #88. Lastly, **1455Y's** brother **LMR Michiro 0193X** has been selected as one of our heavily used herd sires and has been ruling the roost for two years now.

Born December 2011, this 65% **Tajima** breeding female is pregnant with her first calf by one of our **Kitaguni Jr.** herd sires: **LMR Koichi 1409Y** or **LMR Katsumi 1441Y**, due in August, and ready by fall to continue a successful breeding streak like her familial legacy implies.

 2013 November WAGYU Group BREEDPLAN  
 based on 41,500 Wagyu Group herd

EBV	TRAIT	EBV	ACC	EBV percentiles for 1455Y	
+0.8	birth weight (kg)	+1.3	52%	HEAVIER <<	>> HEAVIER
+9	200-day Wt (kg)	+11	48%	LIGHTER <<	>> HEAVIER
+14	400-day Wt (kg)	+12	48%	>> HEAVIER	LARGER
+18	600-day Wt (kg)	+19	45%	<< LOWER	
+1	milk (kg)	-	-		
+0.4	eye muscle area (sq.cm)	+1.0	31%	<< LOWER	
+0.1	IMF (%)	-0.1	32%		
+\$20	fullblood feedlot index	+\$10			



0181X ITOSHIGENAMI TF148 X ITOMICHI-0632 41.01% IMF



LOT  
98

## LMR MS AKAHIGE 1416Y

registration no. **FB12807** birthdate **09/23/2011** scd **VA**sire LMR AKAHIGE 8119U FB8329  
ITOZURUDOI TF151 FB3685  
TF 600 FB6000dam BR MS KITDOI/0632 5603 FB7484  
BR KITATERUYASUDOI 0632 FB5267  
BR MS SANJIROU 0656 FB5091

GROUP	TAJIMA	KEDAKA	TOTTORI	ITOZAKURA	SHIMANE	OKAYAMA	HIROSHIMA	OTHER
<b>D</b>	69%	6%	0%	17%	2%	3%	2%	0%

## FUKUTSURU 068 x 1416Y

GROUP	TAJIMA	KEDAKA	TOTTORI	ITOZAKURA	SHIMANE	OKAYAMA	HIROSHIMA	OTHER
<b>C</b>	63%	12%	8%	9%	1%	4%	1%	0%

Here's another up-and-comer for most winning, balanced breeding! **LMR MS AKAHIGE 1416Y** brings outstanding growth and well beyond prime marbling.

**1416Y** was sired by herd sire **LMR Akahige 8119U** who has produced some of the **largest carcasses in our beef program (971 lb. avg.)** with an average over 30% IMF as well – **that's 3X prime!** See one example pictured. {Note: We have evaluated only 3 carcasses so far, so there is not enough data at this point to be included in the Sire Performance Study.}

With 69% **Tajima** and 17% **Itozakura** by way of **Kitateruyasudo** **ETJ003** and **Sanjiro** respectively, **1416Y** is an investment with outstanding returns regardless of your business' goals. **ETJ003** descends from **Terunaga-Doi** by way of **Kikuteru-Doi** (major names in the **Kikumi-Doi** line of **Tajima**) and is one of foundation sires of Westholme Wagyu (now AACo).

**1416Y's** dam is **BR Ms Kitateruyasudo** **0632 5603**, whose brother by **Kitaguni Jr (8157U)** was graded **AB80** and is pictured below.

**1416Y** is pregnant by **JVP Fukutsuru 068** and is due in early June, ready for a successful breeding by the fall. She was covered by herd sire **LMR Kenichi 807T**, but our strong conviction is that the calf she is carrying is by **Fukutsuru 068**.

2013 November WAGYU Group BREEDPLAN  
based on 41,500 Wagyu Group herd

EBV	TRAIT	EBV	ACC	EBV percentiles for 1416Y	
+0.8	birth weight (kg)	0.0	68%	LIGHTER <<	LIGHTER >>
+9	200-day Wt (kg)	+7	57%	<< LIGHTER	
+14	400-day Wt (kg)	+7	59%	LIGHTER <<	
+18	600-day Wt (kg)	+13	55%		>> LARGER
+1	milk (kg)	-	-	<< LOWER	
+0.4	eye muscle area (sq.cm)	+0.6	37%		
+0.1	IMF (%)	-0.1	40%	<< LOWER	
+\$20	fullblood feedlot index	+\$8		<< LOWER	



0207X AKAHIGE 8119U X SANJIROU 33.90% IMF



8157U KITAGUNI X SANJIROU 34.2% IMF

## LMR MS SENSEI 2317Z

LOT  
99

registration no. **FB13694** birthdate **03/10/2012** scd **VV**

sire LMR SENSEI 817T FB8615 ITOZURUDOI TF151 FB3685  
CF 503 FB5698

dam LMR MS ITOHANA 9232W FB9818 TF ITOHANA 2 FB2294  
BR MS SANJIROU 1620 FB5814

GROUP	TAJIMA	KEDAKA	TOTTORI	ITOUZAKURA	SHIMANE	OKAYAMA	HIROSHIMA	OTHER
<b>C</b>	47%	6%	0%	37%	5%	2%	2%	2%

2013 November WAGYU Group BREEDPLAN  
based on 41,500 Wagyu Group herd

EBV	TRAIT	EBV	ACC	EBV percentiles for 2317Z	
+0.8	birth weight (kg)	-0.1	74%		LIGHTER >
+9	200-day Wt (kg)	-1	64%	<< LIGHTER	
+14	400-day Wt (kg)	+3	59%	<< LIGHTER	
+18	600-day Wt (kg)	+5	57%	<< LIGHTER	
+1	milk (kg)	-	-		
+0.4	eye muscle area (sq.cm)	+0.5	35%		>> LARGER
+0.1	IMF (%)	0.0	34%	LOWER <	
+\$20	fullblood feedlot index	+\$4		<< LOWER	

BREED Avg. EBVs  
2012 born calves

100 50 0

**LMR MS SENSEI 2317Z** (born March 2012) was sired by **LMR Sensei 817T** who brings a powerhouse mating to bear: **Itozurudo TF151** x **Itoshigenami TF148**.

Keep in mind that **TF151**, grandson of **Dai 7 Itozakura**, was one of Takeda's stellar offerings. Semen from **TF151** is no longer available; yet, he is still regarded as "beyond comparison" in Fullblood Wagyu carcasses. **TF148**, son of **Shigeshigenami**, is considered by David Blackmore one of the best three bulls ever exported from Japan. We have seen evidence of that: **TF148** is **#1 Sire for USDA Grade** (average AB98 over 9 carcasses) and **#3 Sire for IMF** (avg 32.85% across 9 imaged carcasses) in the LMR 2014 SPS. Combining these two in the sire of **LMR Ms Sensei 2317Z** is a recipe for balanced greatness.

Rounding out this pedigree is another Takeda favorite **Itohana 2** from the ideal **Itozakura** line, as well as **Sanjiro** and his amazing meat quality and marbling. **2317Z's** dam, **LMR Ms Itohana 9232W**, measured 7.23% IMF at 400 days. Note also that **TF Itohana 2** is **#5 IMF SIRE** (30.92% across 13 imaged carcasses) and **Sanjiro** as dam sire averaged 28.83% over 25 carcasses. This is quite a package. **Examples of Itohana 2's proficiency as a sire and dam sire are pictured at right.**

**2317Z** is exposed to **Michifuku** and if bred, will be due in August. Otherwise she will be sold open and ready to breed or flush.



1248Y KITAGUNI JR X ITOHANA 2\_44.53% IMF



0159X ITOHANA-2 X MICHIFUKU 36.36% IMF



LOT  
100

## LMR MS HIROSHI 1213Y


 registration no. **FB13106**      birthdate **03/10/2011**      scd **VA**

sire LMR HIROSHI 766T FB7794

 BR TAKAZAKURA-0606 3612 FB5972  
 BR MS ITOMICHI-0602 2654 FB5827

dam LMR MS MICHIFUKU 628S FB6639

 MICHIFUKU FB1615  
 CHR MS HIRASHIGE 055J FB4832

GROUP	TAJIMA	KEDAKA	TOTTORI	ITOUZAKURA	SHIMANE	OKAYAMA	HIROSHIMA	OTHER
D	63%	7%	3%	12%	2%	7%	3%	3%

## SANJIROU x 1213Y

GROUP	TAJIMA	KEDAKA	TOTTORI	ITOUZAKURA	SHIMANE	OKAYAMA	HIROSHIMA	OTHER
D	81%	4%	1%	6%	1%	3%	1%	2%

 2013 November WAGYU Group BREEDPLAN  
 based on 41,500 Wagyu Group herd

EBV	TRAIT	EBV	ACC	EBV percentiles for 1213Y	
+0.8	birth weight (kg)	+2.3	59%	« HEAVIER	HEAVIER »
+9	200-day Wt (kg)	+16	52%		HEAVIER »
+14	400-day Wt (kg)	+22	51%		HEAVIER »
+18	600-day Wt (kg)	+29	49%		HEAVIER »
+1	milk (kg)	-	-		LARGER »
+0.4	eye muscle area (sq.cm)	+1.4	33%	LOWER «	
+0.1	IMF (%)	0.0	34%		
+\$20	fullblood feedlot index	+\$22			» HIGHER
Breed Avg. EBVs 2012 born calves				100	50 0

Excellent flush cow alert! Born March 2011, **LMR MS HIROSHI 1213Y** has already proven a powerful flush cow, producing 10 viable embryos in her one and only flush in her young life and has given us one AI heifer calf born last September, **3502A** by **Itoshigenami TF148**. Sired by **LMR Hiroshi 766T**, a balanced sire, this composite breeding female brings fantastic beef yield (evidenced by the strong EBV) and a respectable Fullblood Feedlot Index.

With **Michifuku** and the trend-setting Westholme Foundation sire **Hirashigetayasu ETJ001** on her maternal side, **1213Y** is a winner sure to breed more winners. Bear in mind that **ETJ001** – sired by **Dai 20 Hirashige** – epitomizes the Kedaka line and its hallmark large frame size and balance, as well as its propensity for producing A5 grade beef in Japan.

**1213Y's** dam, **LMR Ms Michifuku 628S**, is a large (6.2 Frame Score) and prodigious cow, having produced 36 viable embryos and 14 calves so far, with 4 of them in the sale today, including sisters **LMR Ms Itomichi 1283Y**; **LMR Ms Itomichi 1292Y**; and **LMR Ms Sensei 2425Z** – Lot #'s 43, 58, and 77.

**1213Y** is bred to **Sanjirou** and will calve in August.



LMR HIROSHI 766T, SIRE OF 1213Y, IN 2009

## KITAGUNI JR X BR MS YASUFUKU JR 1602 • FIVE EMBRYOS

EMBRYO  
LOT 101

8166U KITAGUNI JR X YASUFUKU JR 50.2% IMF



8167U KITAGUNI JR X YASUFUKU JR 39.1% IMF

sire KITAGUNI JR FB2422

KITAGUNI 7 NO 8 J1530 FB581  
NAKAYUKI J13943 FB2893

dam BR MS YASUFUKU JR 1602 FB5811

YASUFUKU JR FB5061  
MISS BAR R 361H FB4213

GROUP	TAJIMA	KEDAKA	TOTTORI	ITZAKURA	SHIMANE	OKAYAMA	HIROSHIMA	OTHER
C	62%	6%	0%	14%	6%	8%	0%	3%

2013 November WAGYU Group BREEDPLAN  
based on 41,500 Wagyu Group herd

EBV	TRAIT	EBV	ACC	EBV percentiles for Kitaguni Jr x 1602	
+0.8	birth weight (kg)	-3.2	-		LIGHTER »
+9	200-day Wt (kg)	-10	-	« LIGHTER	
+14	400-day Wt (kg)	-16	-	« LIGHTER	
+18	600-day Wt (kg)	-23	-	« LIGHTER	
+1	milk (kg)	-3	-	« LOWER	
+0.4	eye muscle area (sq.cm)	-1.7	-	« SMALLER	
+0.1	IMF (%)	+0.9	-		HIGHER »
+\$20	fullblood feedlot index	+\$7		« LOWER	

100 50 0

Hold on to your seats, folks! Here's a rare opportunity to get your hands on the herd-leading marbling 'nick' that is the **Yasufuku Jr** x **Kitaguni Jr** pairing. This precious embryo lot is a result of AI mating between dam **BR Ms Yasufuku Jr 1602** and **Kitaguni Jr** semen.

Born August of 2007, dam **1602** is a powerhouse female, scoring in the Top 1% for IMF EBV. Her pedigree is a majestic marbling piece of artwork blazing with foundation sire beauty, with **Yasufuku Jr** on her paternal side, and **Michifuku** and **JVP Fukutsuru 068** on her maternal side. **Michifuku** is unmistakable: called "the best carcass bull ever to leave Japan" as well as being a standout in the marbling category in the US Wagyu Sire Summary, this foundation sire's presence in the pedigree assures super premium returns.

What's more, her sire, **Yasufuku Jr** is **#1 Dam Sire** in the 2014 SPS and #2 for IMF, second only to **Kitaguni Jr**, with an average of 33.10% based on 9 carcass images. He was also #2 when scored by USDA Grade and #2 in REA (14.67) based on 11 carcasses. **Examples of the Kitaguni x Yasufuku "nick" as Dam Sire are shown above.**

Pairing this outstanding animal with none other than **Kitaguni Jr**, you get the picture of this prized lot. The mating is a 62% **Tajima**, 14% **Itozakura** progeny assured of epic marbling. Other progeny of **1602** have resulted in herd-leading IMF% scores and tops in BMS.



EMBRYO  
LOT 102

## LMR YOJIMBO 634S X BR MS TAK-0606 4622 • FIVE EMBRYOS



8155U YOJIMBO X MICHIFUKU 40.2% IMF



9274W YOJIMBO X MICHIFUKU\_38.70% IMF

sire LMR YOJIMBO 634S FB6761

 BAR R FUKUTSURU 36H FB4235  
 BR MS YASUFUKU 0609 FB5082

dam BR MS TAK-0606 4622 FB6247

 BR TAKAZAKURA 0606 FB5101  
 BR MS MICHIFUKU7602 1613 FB5095

GROUP	TAJIMA	KEDAKA	TOTTORI	ITAZAKURA	SHIMANE	OKAYAMA	HIROSHIMA	OTHER
D	71%	4%	1%	7%	0%	7%	3%	7%

2013 November WAGYU Group BREEDPLAN  
based on 41,500 Wagyu Group herd

EBV	TRAIT	EBV	ACC	EBV percentiles for 634S x 4622	
+0.8	birth weight (kg)	+1.0	-	HEAVIER <<	
+9	200-day Wt (kg)	+5	-	<< LIGHTER	
+14	400-day Wt (kg)	+6	-	<< LIGHTER	
+18	600-day Wt (kg)	+10	-	<< LIGHTER	
+1	milk (kg)	-6	-	<< LOWER	
+0.4	eye muscle area (sq.cm)	-0.1	-	<< SMALLER	
+0.1	IMF (%)	+0.1	-		HIGHER
+\$20	fullblood feedlot index	+\$5		<< LOWER	

BRED Avg. EBVs  
2012 born calves

100 50 0

This 71% **Tajima** embryo lot might be the best investment a lucky producer will make on sale day! Born of dam **BR Ms Tak-0606 4622** mated with very rare sexed **Yojimbo** semen, here are a couple of reasons to save up for this lot.

Remember that **LMR Yojimbo 634S** sold for \$35,000 in our first production sale 7 years ago. Ten-year old dam **4622** is a very good flush cow, producing 48 viable embryos in 8 flushes – that's a strong 6 average per flush. Her progeny include two steers that went into the Lone Mountain Fullblood Wagyu beef program before the carcass camera investment; both of the two steers were from a **Kitaguni Jr** mating and were graded AB80 and AB90. A third progeny of **4622** is **0166X** who is also in the sale as Lot # 83, and was a result of the same flush to sexed **Yojimbo** semen that produced 17 viable embryos.

The winning pedigree of dam **4622** includes an outstanding **Takazakura** son (paternal side), and a proven **Michifuku** son and incomparable **TF Kikuhana** on her maternal side. Take **Takazakura's** growth and marbling balancing act and add **Michifuku's** unforgettable legacy as "the best carcass bull ever to leave Japan", and it's apparent why this should be top on your list.

We have not yet collected enough data on **Yojimbo** as a Dam Sire – but are confident that as the numbers begin to roll in he will rank quite high. **Examples of Yojimbo-sired marbling are seen above.**

## HIRASHIGETAYASU ETJ001 X LMR MS MICHIFUKU 629S • SIX EMBRYOS

EMBRYO  
LOT 103

8155U YOJIMBO X MICHIFUKU 40.2% IMF



0203X ETJ001 X SANJIROU 34% IMF

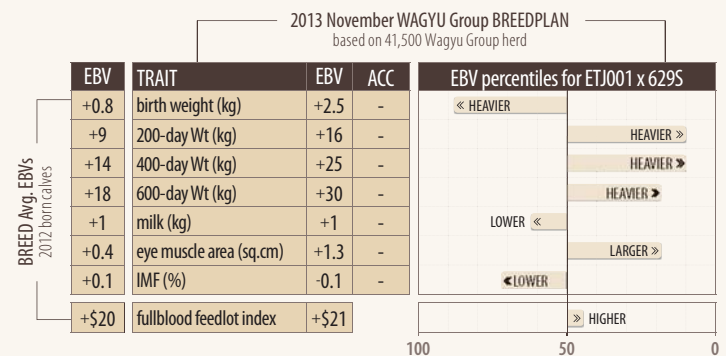
sire HIRASHIGETAYASU ETJ001 FB670

DAI 20 HIRASHIGE J287 FB330  
DAI 5 YURUHIME FB669

dam LMR MS MICHIFUKU 629S FB6640

MICHIFUKU FB1615  
BR MS TAKAZAKURA 0652 FB5076

GROUP	TAJIMA	KEDAKA	TOTTORI	ITOUZAKURA	SHIMANE	OKAYAMA	HIROSHIMA	OTHER
C	51%	19%	6%	2%	0%	17%	2%	3%



Here we have a marriage made in heaven - an embryo lot that brings the best of all possible lineages together. Dam **LMR Ms Michifuku 629S** is our 8-year old fantastic donor cow who has produced for us 38 outstanding viable embryos in 4 flushes, a commendable 9 per flush average, as well as 12 offspring to boot. **One of 629S's progeny, LMR Yojimbo 8155U, measured 40.2% IMF (pictured) & another son by Hikoshigefuji Y342 (9299W) graded AB90.**

Made up of a superior trio of foundation sires, **629S's** pedigree includes the mega-marbling **Michifuku** on her paternal side, and the terrifically balanced **Takazakura** and the historic **JVP Fukutsuru 068** on her maternal side. With this lineage in play, it's no wonder that **629S** scored in the BREEDPLAN's top 10% IMF EBV and achieved an awesome 6.01% IMF on the 400-day ultrasound scan.

Paired with the trend-setting Westholme Foundation sire **Hirashigetayasu ETJ001**, this winning embryo lot will be an epic economic investment for the lucky winner. Bear in mind that **ETJ001 has been assigned EBVs by BREEDPLAN that show him as residing in the top 1% for: 600-Day Weights; REA and Milk** – supporting data we are finding in our ongoing study at LMR. Taken in context of the dam in this mating, this 51% **Tajima**, 19% **Kedaka**, 17% **Okayama** composite is an embryo lot to pay special attention to. **An example of an ETJ001-sired steer is pictured above.**



EMBRYO  
LOT 104

## SANJIROU X LMR MS ITOHANA 8175U • FIVE EMBRYOS



1257Y YASUFUKU JR X SANJIROU 39.84% IMF



0104X HIKOSHIGEFUJI Y342 X SANJIROU 38.04% IMF

sire SANJIROU FB2501

MICHIFUKU FB1615  
SUZUTANI FB1617

dam LMR MS ITOHANA 8175U FB9457

TF ITOHANA 2 FB2294  
LMR KEIKO 3 637S FB6899

GROUP	TAJIMA	KEDAKA	TOTTORI	ITOUZAKURA	SHIMANE	OKAYAMA	HIROSHIMA	OTHER
D	68%	1%	0%	22%	2%	1%	3%	3%

2013 November WAGYU Group BREEDPLAN  
based on 41,500 Wagyu Group herd

EBV	TRAIT	EBV	ACC	EBV percentiles for Sanjiro x 8175U	
+0.8	birth weight (kg)	+0.9	-	HEAVIER <	
+9	200-day Wt (kg)	+6	-	< LIGHTER	
+14	400-day Wt (kg)	+9	-	< LIGHTER	
+18	600-day Wt (kg)	+8	-	< LIGHTER	
+1	milk (kg)	-4	-	< LOWER	
+0.4	eye muscle area (sq.cm)	+0.4	-		>> LARGER
+0.1	IMF (%)	+0.2	-		>> HIGHER
+\$20	fullblood feedlot index	+\$8		< LOWER	

100 50 0

The fourth and final embryo lot on offer on sale day, this pairing is between dam **LMR Ms Itohana 8175U** - a six year old up-and-coming breeding female for us - and the inimitable **Sanjiro**.

**8175U** is a **TF Itohana 2** daughter, with a maternal side of **Bar R Fukutsuru 36H** - one of Jerry Reeves' prime sires - and an established **TF Itomichi 1-2** son. Remember that **TF Itohana 2** ranks in the **top 5% for both Milk EBV and Scrotal EBV** in BREEDPLAN results, while also being of a gentle nature. These are genetics meant for productivity, fertility and mothering, a breeder's dream. **Examples of the marbling produced by Sanjiro as Dam Sire (1257Y, 0104X and 8157U) are pictured.**

This embryo lot should not be overlooked, what with the balance of 68% **Tajima**, 22% **Itozakura** genetics and the promise of extraordinary marbling as shown above combined with strong growth and milk characteristics from **Itohana** and **Itomichi**.

This could be the day's winner.



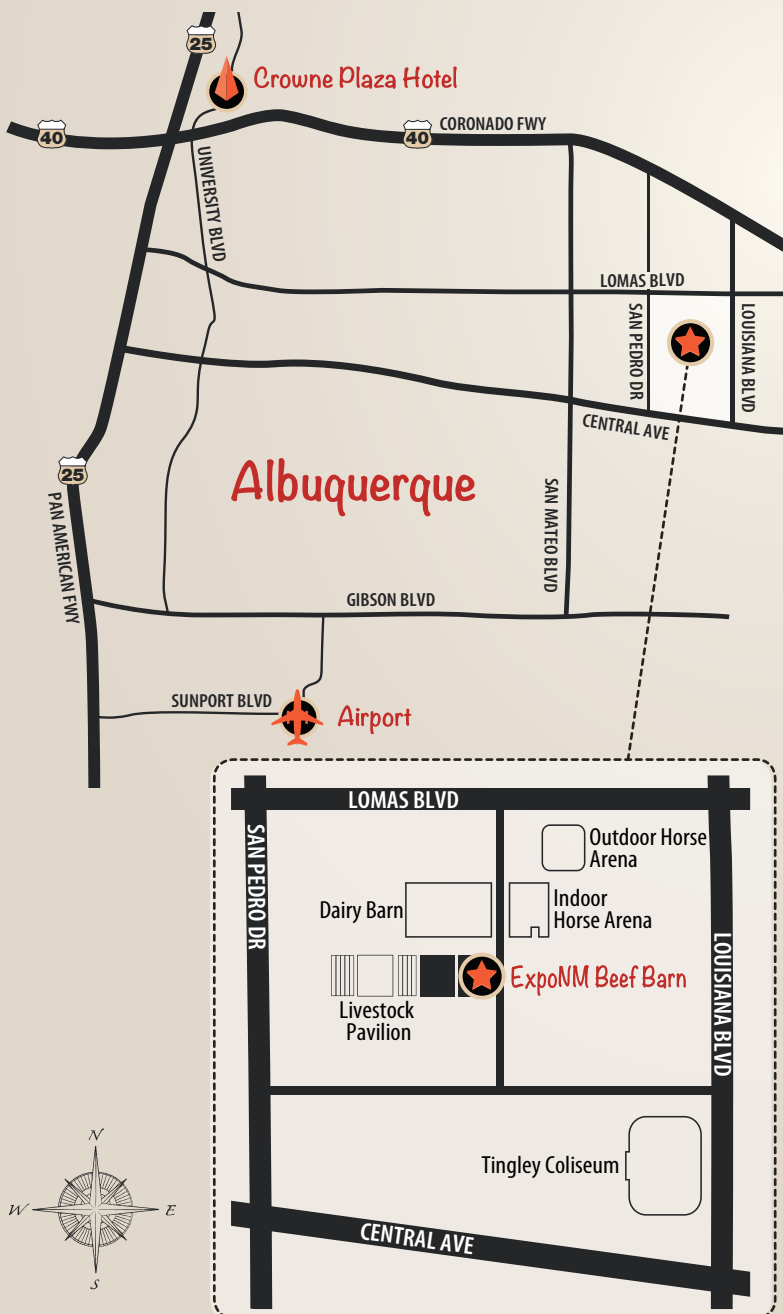
8157U KITAGUNI X SANJIROU 34.2% IMF

# SALE DAY INFORMATION

## SALE LOCATION

The sale will be held at ★ **ExpoNM BEEF BARN**  
300 San Pedro Drive Northeast, Albuquerque.

The **BEEF BARN** is on the south west corner of Avenue of the Governors and Fern Sawyer Avenue (just south of the Dairy Barn Albuquerque).



## PROGRAM OF EVENTS

### FRIDAY MAY 16 2014

- 8am – 4pm PREVIEW sale cattle at Beef Barn  
5pm – 7pm RECEPTION at Crowne Plaza Hotel Patio featuring Lone Mountain Wagyu Sliders and Libations

### SATURDAY MAY 17 2014

- 8am – 11am SALE PREVIEW with coffee and pastries  
11am – 1pm CATERED LUNCH - Quetzalcoatl Food Truck featuring Mexican-style Lone Mountain Wagyu  
1pm 2014 LONE MOUNTAIN FULLBLOOD WAGYU FEMALE PRODUCTION SALE

## ACCOMMODATION

### ALBUQUERQUE AREA



#### CROWNE PLAZA HOTEL

1901 University Blvd NE,  
Albuquerque, NM 87102  
☎ 505 884 2500

*Mention Lone Mountain to receive a discounted rate.*

### SANTA FE AREA

#### INN AT LORETTO

211 Old Santa Fe Trail  
☎ 866 582 1646

#### TEN THOUSAND WAVES RESORT

3451 Hyde Park Road  
☎ 505-982-9304

## LOCAL FLAVOR



*We are proud to partner with a variety of local restaurants that serve our Lone Mountain Wagyu Fullblood Wagyu Beef. We hope you'll make a stop while in town.*

### SANTA FE

#### THE COMPOUND

[www.compoundrestaurant.com](http://www.compoundrestaurant.com)

#### IZANAMI

[www.tenthousandwaves.com](http://www.tenthousandwaves.com)

*at the Ten Thousand Waves Resort*

#### LUMINARIA RESTAURANT

[www.innatloretto.com](http://www.innatloretto.com)

*Inn at Loretto*

### ALBUQUERQUE

#### MARCELLO'S CHOPHOUSE

[www.marcelloschophouse.com](http://www.marcelloschophouse.com)

#### NOB HILL BAR & GRILL

[www.upscalejoint.com](http://www.upscalejoint.com)



c/o James Danekas & Associates, Inc.  
P.O. Box 410  
Wilton, CA 95693  
*Change of Service Requested*

PRESORTED  
FIRST CLASS  
U.S. POSTAGE  
PAID  
Tucson, AZ  
Permit No. 271




100% FULLBLOOD WAGYU CATTLE

TAKE YOUR HERD BEYOND PRIME



LONE MOUNTAIN CATTLE COMPANY

 1818AB NM 14 Golden, New Mexico

 505 281 1432

 [LoneMountainCattle.com](http://LoneMountainCattle.com)